



Welcome

Range Road 231 & 232 Planning for Upgrades Open House #2

**October 17, 2018
5:00pm to 8:00pm**



Open House Purpose

To provide residents and businesses with the opportunity to view the project information and discuss interests and concerns with project staff.





Project Purpose

This study will identify the improvements needed over the next 30 years for:

- Number of travel lanes
- Intersection upgrades
- Posted speed limits
- Multi-use trails (pedestrian and cyclists)
- Drainage requirements
- Property impacts

Construction timelines for the recommended improvements are unknown at this time, and are dependent on local growth rates and the municipal budget.



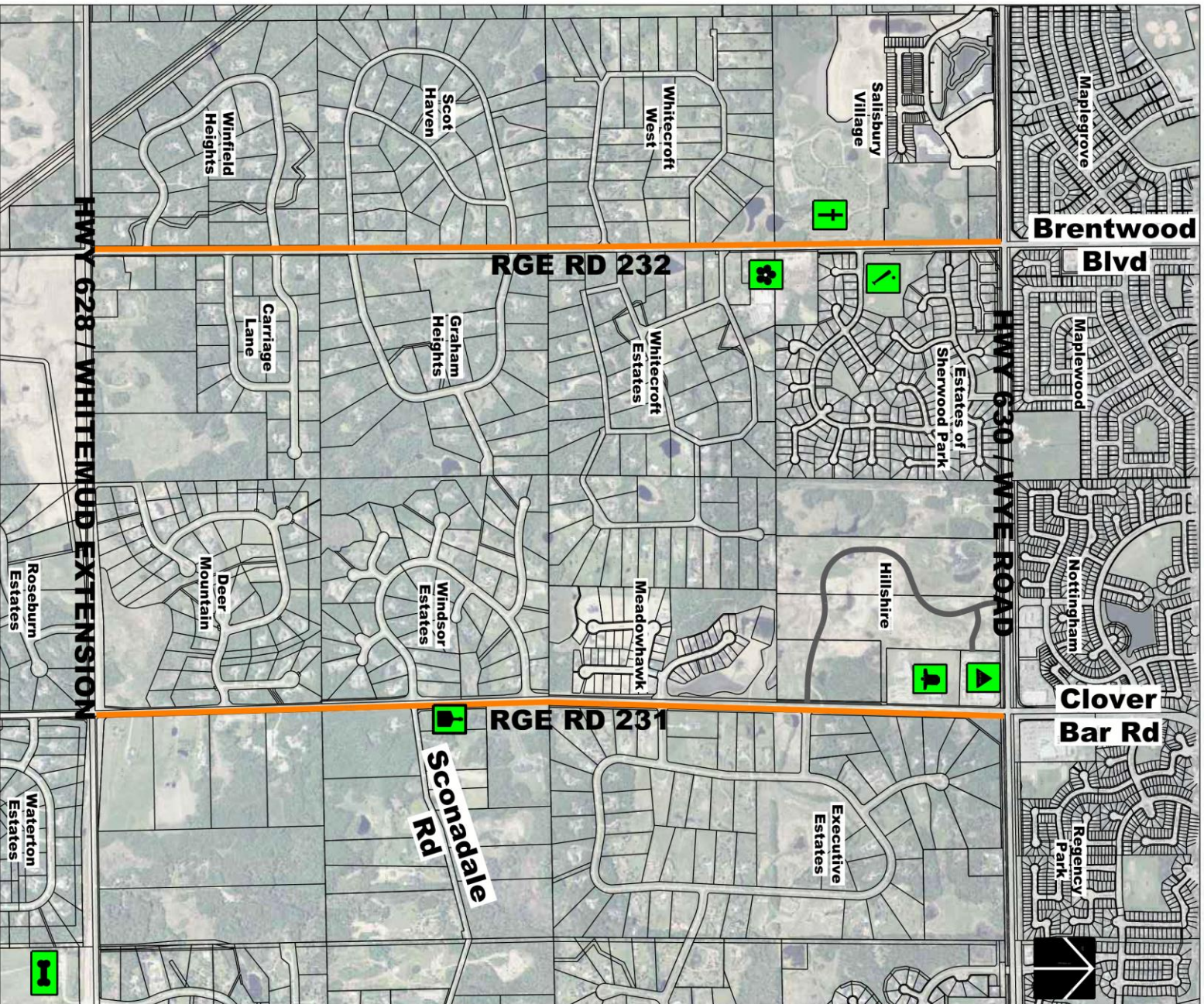
No decisions have been made

Comments received from the community will guide the recommendations.



Follow www.Strathcona.ca/231and232 for project updates.

STUDY AREA MAP



LEGEND

- | | | | | | | | |
|--|-----------------------------------|---|------------------------|---|--------------------------------|--|------------------------------|
|  | STUDY AREA |  | SALSBUURY GREENHOUSE |  | ELK ISLAND SCHOOL BOARD OFFICE |  | CHRISTIAN ACADEMY ELEMENTARY |
|  | GLENNWOOD FUNERAL HOME & CEMETERY |  | VICTORY BAPTIST CHURCH |  | DEERMOUND OFF-LEASH PARK |  | SPORTS FIELD |



Community Engagement To Date



The project team has gathered input through an online survey, door-to-door visits, kitchen table meetings in the community, and a public open house.

We have also met with:

- Alberta Transportation
- Glenwood Funeral Home & Cemetery
- Salisbury Greenhouse
- Victory Baptist Church
- Strathcona Christian Academy





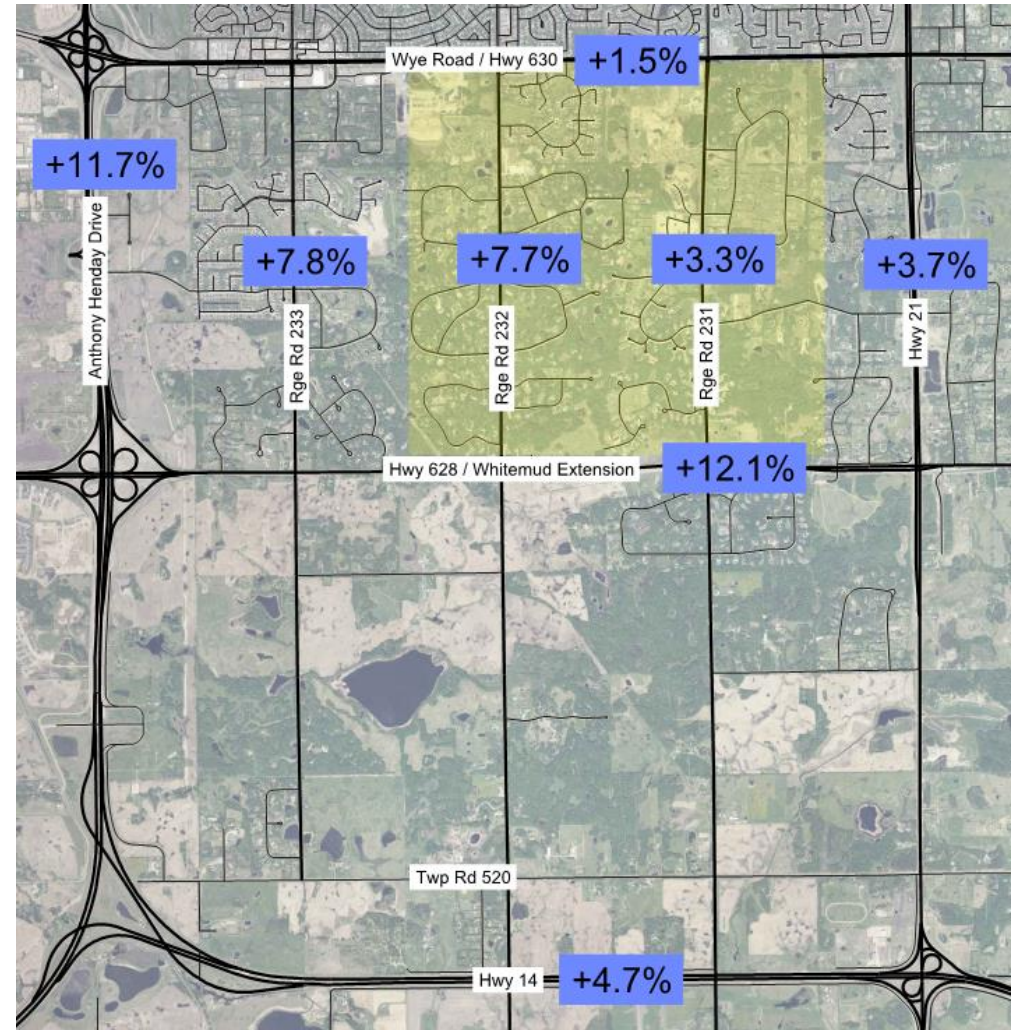
What We Have Heard




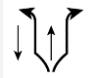





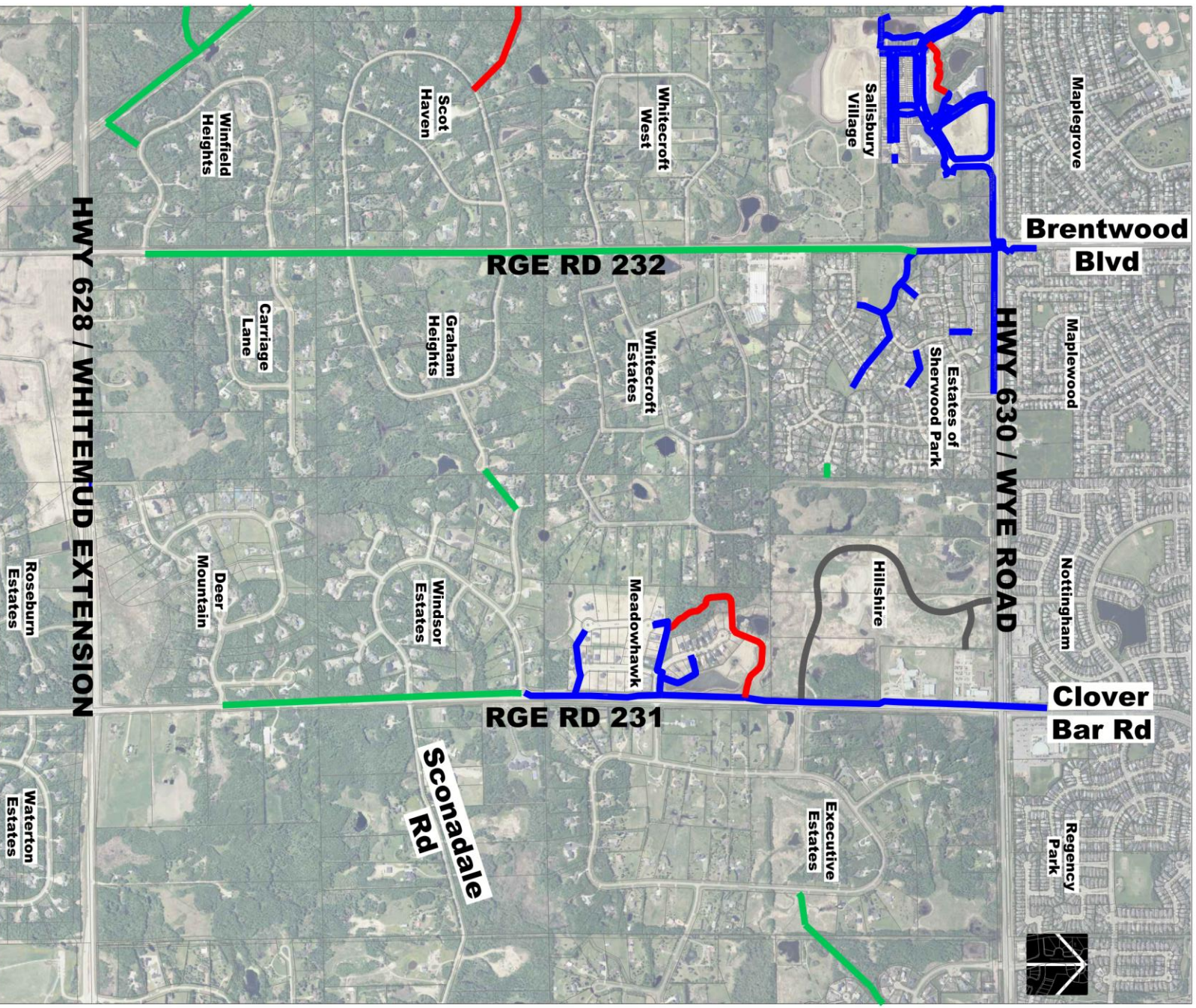
Annual Traffic Growth Patterns (2008-2017)

Over the last 9 years traffic volumes have continued to grow along all corridors, despite fluctuations caused by construction along Anthony Henday Drive, Highway 21, Wye Road, and Highway 628.



Roadway Improvements Reviewed					
Criteria	 Roundabouts (similar to Range Road 233 at Balmoral Way / Clubhouse Drive)	 Signals	 Four-way stop	 Left & right turn bays	 Four Lanes
Safety	Removes conflict points, decreases probability of serious injuries and fatalities.	Maintains conflict points and probability of serious injuries and fatalities.	Maintains conflict points.	Maintains conflict points.	Maintains conflict points.
	Decreases travel speed.	Lowers probability of high speed collision.	Lowers probability of high speed collision.	Increases probability of high speed collision.	Increases probability of high speed collision.
Traffic Flow	Increases delay along the corridor.	Increases delay along the corridor.	Increases delay along the corridor.	Improves corridor capacity.	Improves corridor capacity.
	Decreases side street delay.	Decreases side street delay.	Decreases side street delay.	Does not decrease side street delay.	Does not decrease side street delay.
Pedestrian/Cyclist Accommodation	Clearly defined crosswalks	Protected walk phase	Clearly defined crosswalks	Increases crossing width	Increases crossing width
Land Impacts	Minimal	Minimal	None	Minimal	Significant
Relative Cost	\$\$\$	\$\$\$	\$	\$\$	\$\$\$\$\$
Next Steps	Improvement still being considered.	Improvement still being considered.	Improvement does not achieve project objectives in the long term and are no longer being considered.		

Strathcona County - Proposed Trails 2019-2030





Additional Considerations

In addition to public feedback, the following must be considered:

- Posted speed limits
- Utilities
- Property
- Drainage
- Soil Conditions
- Environment





We Still Need Your Help on Range Road 232

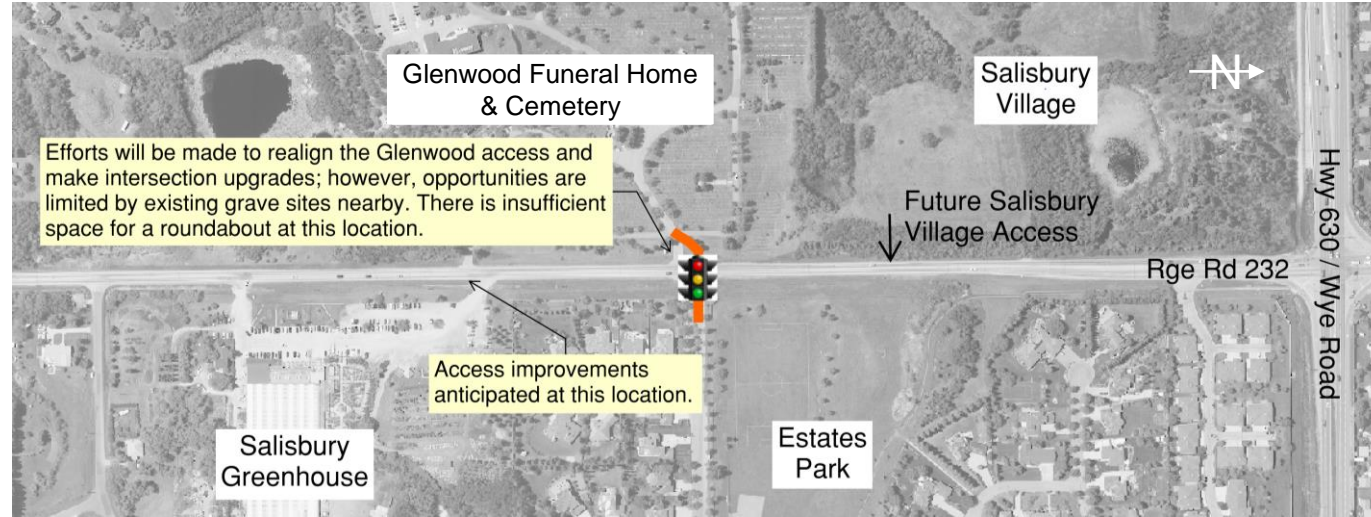
Along Range Road 232, the staggered intersection at Estate Drive/Glenwood Funeral Home & Cemetery access will experience traffic delay on the side roads in the long term.

Due to the proximity of graves within Glenwood, there is limited opportunity to realign the access to improve sight lines, or to make intersection improvements to address the traffic delay.

Alternatives shown on the following boards are being considered to address these issues.

Work with Existing Entrances

Realign Glenwood Funeral Home & Cemetery's main access to better line up with Estates Drive and install signals to address delay. Overall improvements would be limited to avoid impacting existing grave sites.



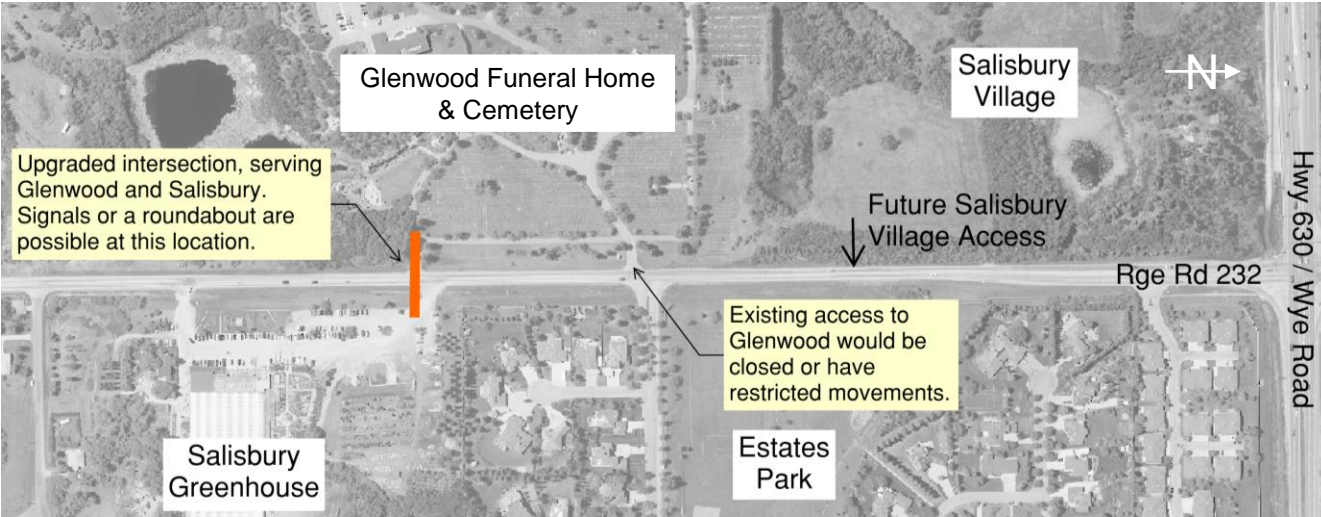
Support

Support with Conditions

Do Not Support

Relocate Glenwood's Main Entrance

The main access to Glenwood would be relocated to the southern access, where an upgraded intersection would be created with access to Salisbury Greenhouse. The existing main access to Glenwood would be closed or have restricted movements.



Support	Support with Conditions	Do Not Support

T- Intersections

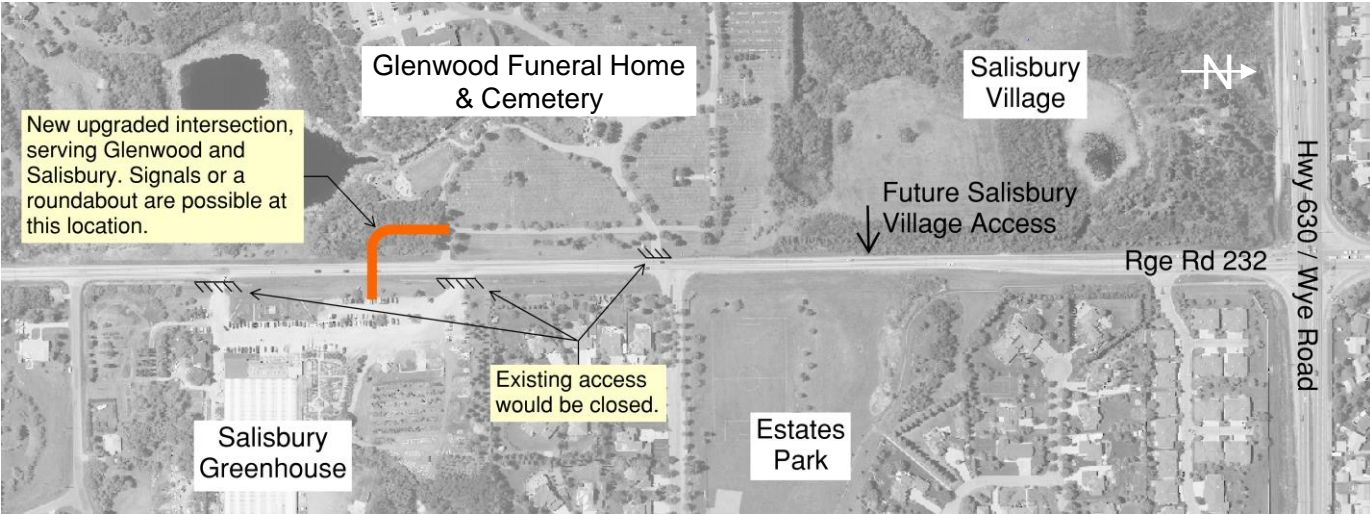
The northern accesses to Glenwood and Salisbury Greenhouse would be closed, creating T-intersections along the corridor. Intersection upgrades are not required.



Support	Support with Conditions	Do Not Support

New Access

The two Glenwood and two Salisbury Greenhouse accesses will be consolidated into a new upgraded intersection. Existing accesses would be closed or have restricted movements.

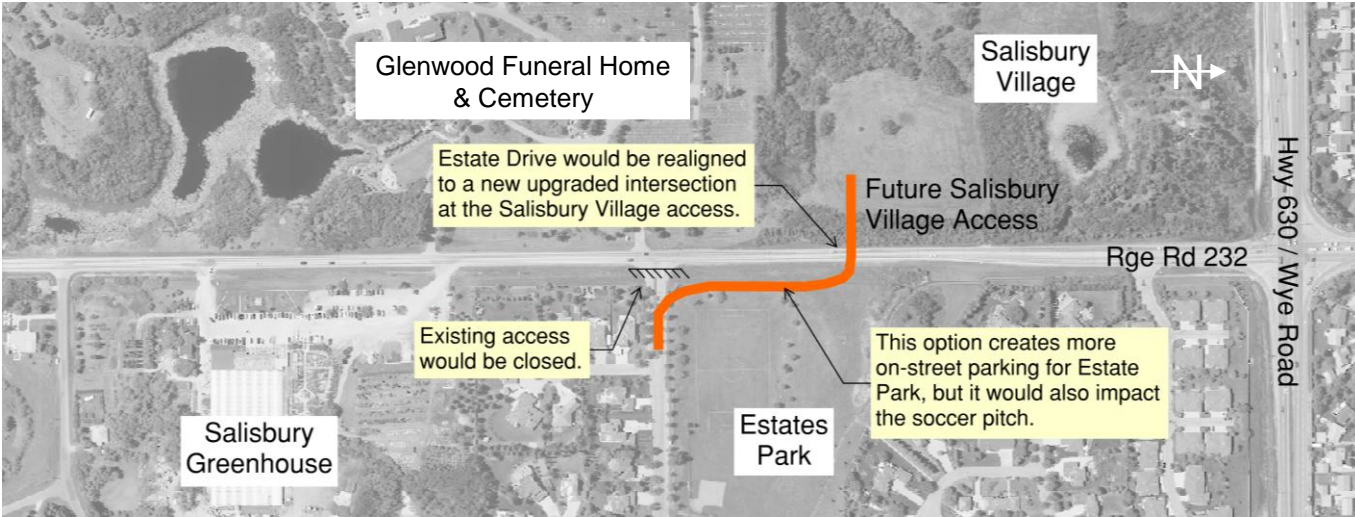


Support	Support with Conditions	Do Not Support

Realigning Estate Drive

Estates Drive would be closed and realigned to a new upgraded intersection at the Salisbury Village access.

This option would create more on-street parking for Estates Park, but it would also impact the soccer pitch.



Support	Support with Conditions	Do Not Support



Add Your Comments

- Aerial maps located on the tables
- Comment sticky walls





Thank you

Please help us by taking the time to fill out the open house evaluation form.

If you have additional comments or questions about the project, please contact:

Tony Maghee, P.Eng.

Strathcona County

780-464-8035

Tony.Maghee@strathcona.ca

Shelly Moulds, P.Eng.

ISL Engineering and Land Services Ltd.

780-438-9000

smoulds@islengineering.com

