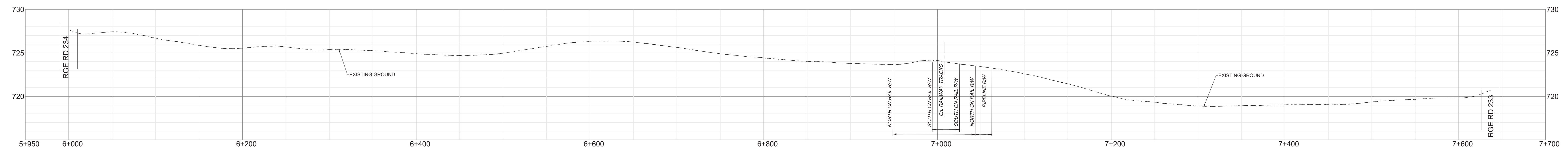
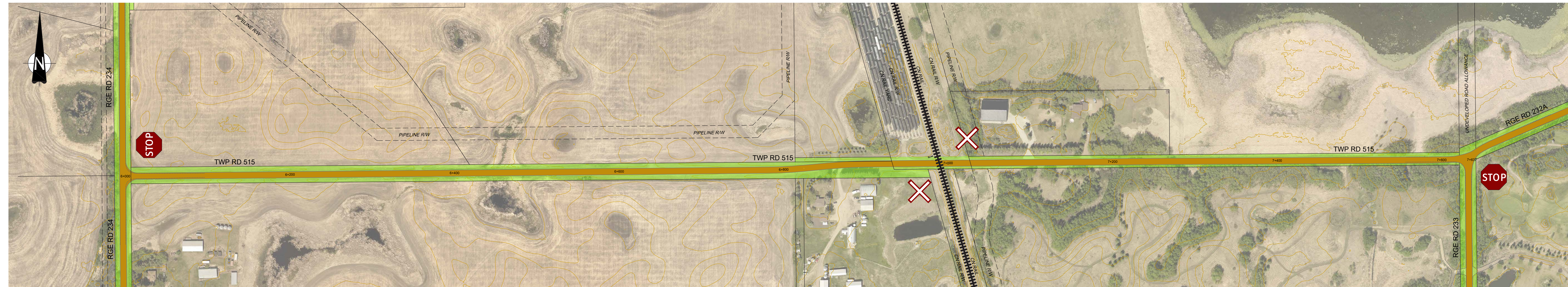


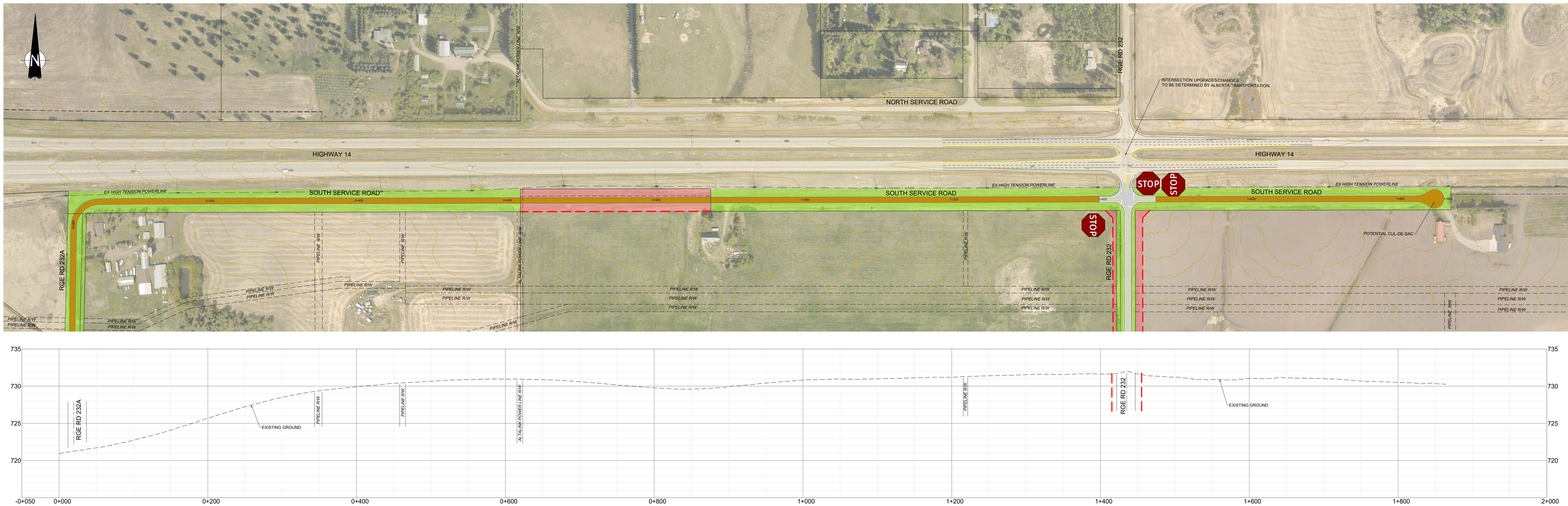
Southwest Strathcona County Functional Planning Study

Township Road 515 (Range Road 234 – Range Road 233)



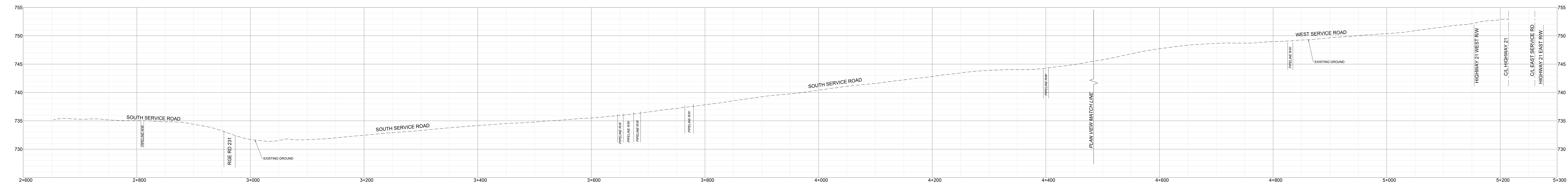
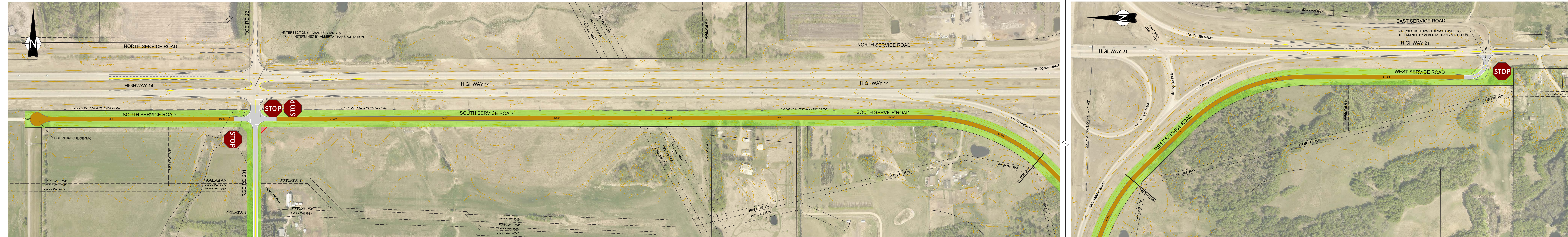
Southwest Strathcona County Functional Planning Study

Highway 14 Service Road (Range Road 233 – Range Road 232)



Southwest Strathcona County Functional Planning Study

Highway 14 Service Road (Range Road 231 – Highway 21)



	Centre Line		Potential Backslope Encroachment
	Edge Line		Existing Road Right-of-Way
	Paved Road		Proposed New Road Right-of-Way
	Gravel Road		Potential Surplus Right-of-Way
	Potential Access Change		Property Line (Existing / Proposed)

strathcona.ca/SouthFPS