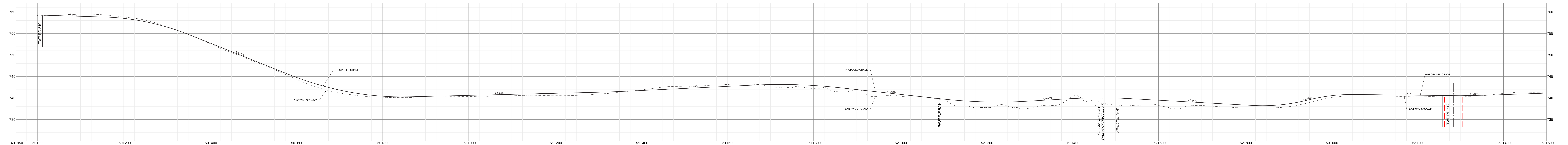
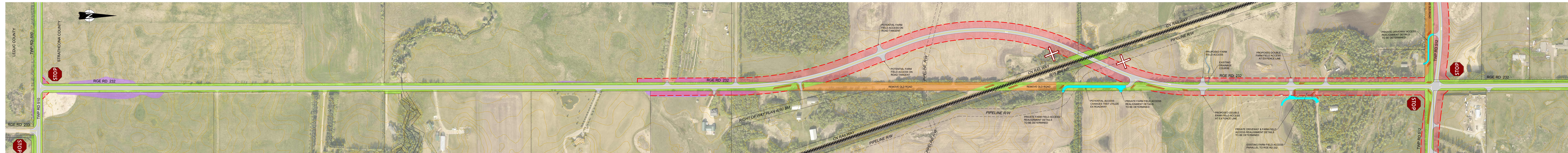


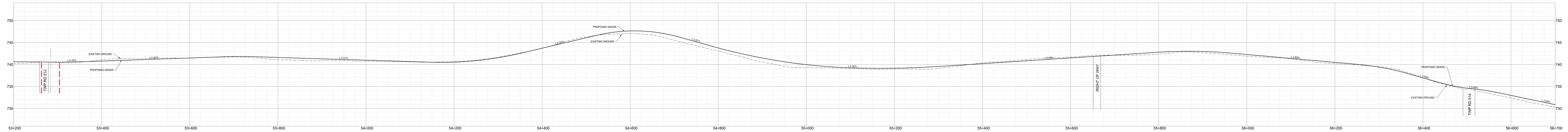
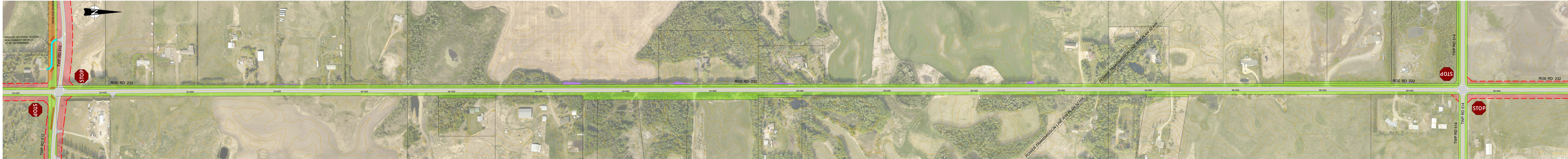
Southwest Strathcona County Functional Planning Study

Range Road 232 (Township Road 510 – Township Road 512)



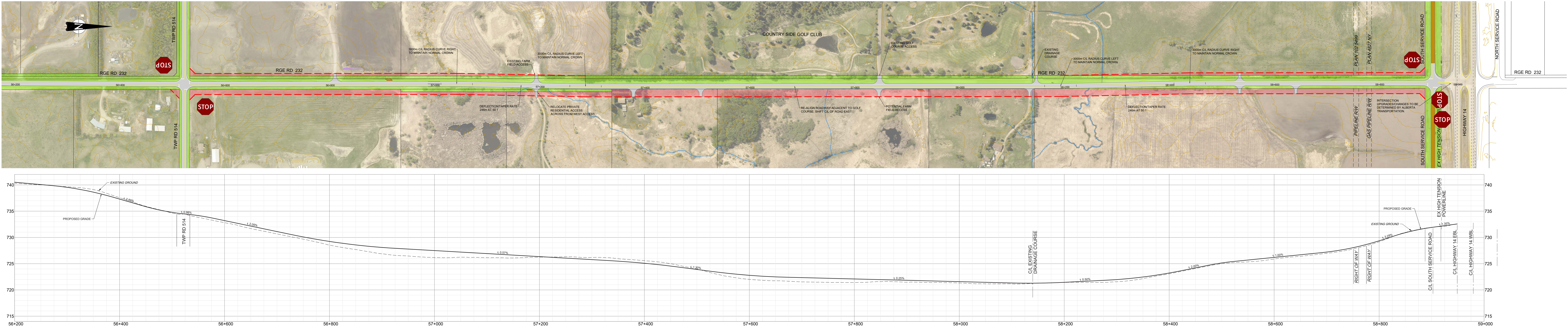
Southwest Strathcona County Functional Planning Study

Range Road 232 (Township Road 512 – Township Road 514)



Southwest Strathcona County Functional Planning Study

Range Road 232 (Township Road 514 – Highway 14)



	Centre Line		Potential Backslope Encroachment
	Edge Line		Existing Road Right-of-Way
	Paved Road		Proposed New Road Right-of-Way
	Gravel Road		Potential Surplus Right-of-Way
	Potential Access Change		Property Line (Existing / Proposed)