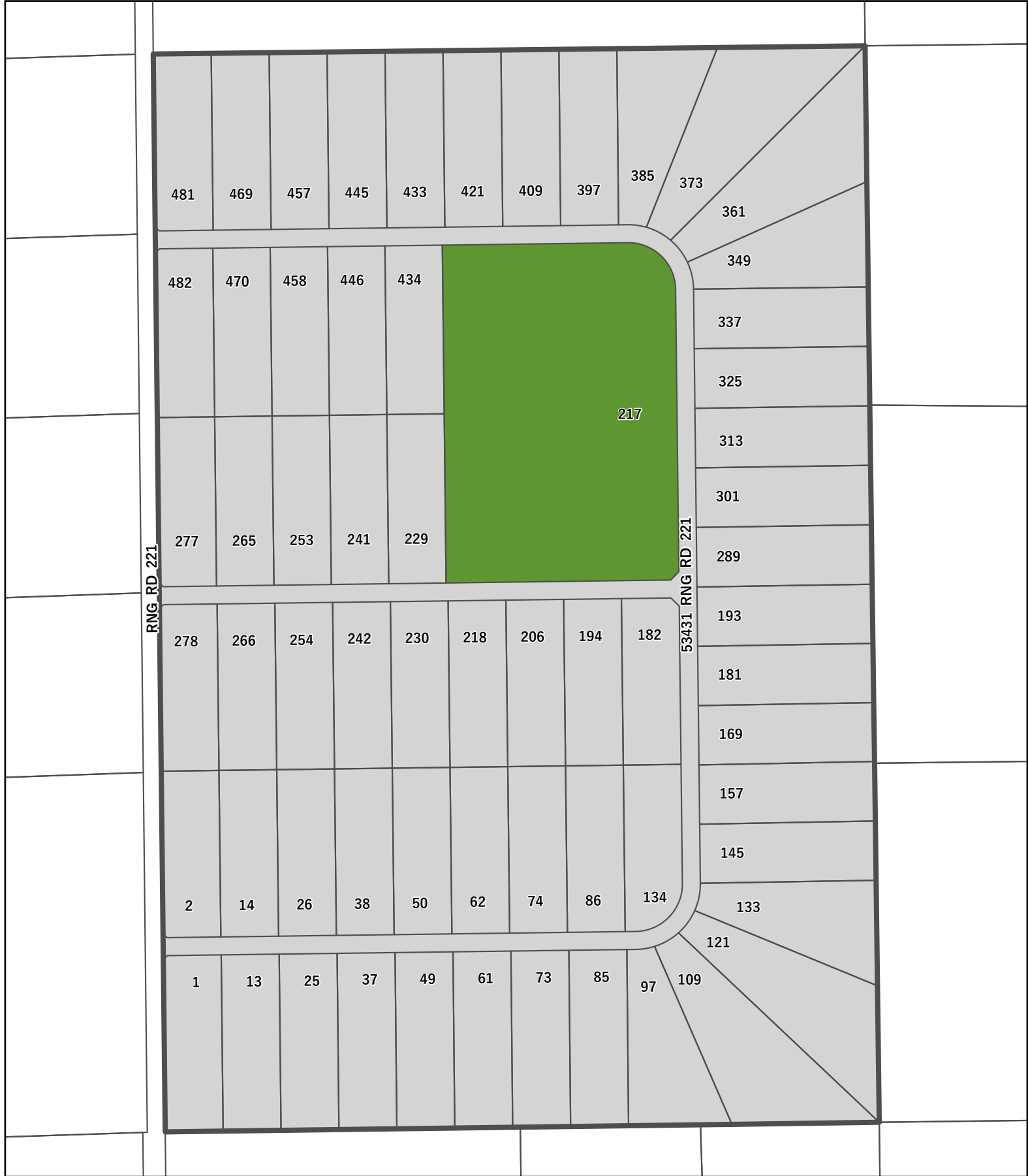





PLEASANT VIEW
53431 Range Road 221



27 House Number  Privately Owned
 Rural Subdivision Boundary  Municipal, Provincial or Federal Government Owned



PLEASANT VIEW

53431 Range Road 221



- 27 House Number
- Privately Owned
- Rural Subdivision Boundary
- Municipal, Provincial or Federal Government Owned