

## The Bremner and LEA Area Concept Plan has been adopted by Council

On September 10, 2019, second and third reading were given to proposed Bylaw 3-2019, to adopt the Bremner and LEA Area Concept Plan (ACP).

In addition, proposed Bylaw 2-2019, to amend the Municipal Development Plan also received second and third reading, in support of Bylaw 3-2019.

An area concept plan is a statutory plan that provides a comprehensive planning framework and a generalized future land use concept to guide subsequent area structure plans undertaken by developers.

The Bremner and LEA Area Concept Plan provides Strathcona County with a planned growth area to accommodate Strathcona County's share of future population growth in the region.

To view the final Bremner and LEA Area Concept Plan Bylaw 3-2019, and the technical documents, please visit the Bremner Document Library at the following link: [www.strathcona.ca/business-and-development/zoning-and-land-use/bremner-area-project/document-library-bremner/](http://www.strathcona.ca/business-and-development/zoning-and-land-use/bremner-area-project/document-library-bremner/)

## Next Steps

Approval of the Area Concept Plan does not result in Council approving funds on future infrastructure development for the area. Decisions on potential costs for future infrastructure and development will require consideration and approval by future Strathcona County Councils.

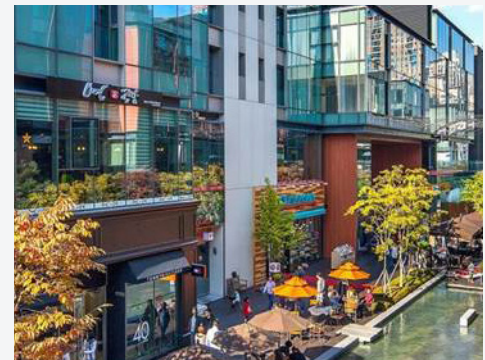
Sub-Area Structure Plan (ASP) proposals can now be submitted by area landowners and developers in accordance with the Bremner and LEA Area Concept Plan.

Learn more about the Bremner Area Project and view the Bremner Frequently Asked Questions page by visiting the project webpage: [www.strathcona.ca/bremner](http://www.strathcona.ca/bremner)

## Did You Know?

### 1. What is mixed-use development?

Mixed-use development combines compatible residential, commercial, institutional and recreational land uses within buildings or in close proximity to each other to increase density, reduce the development footprint through land use, and improve accessibility to amenities.



### 2. What is Multi-modal transportation?

Multi-modal transportation and complete streets refers to the availability of infrastructure for all types of transportation including walking, cycling, vehicular transportation and public transportation. Separating street users, especially in high volume areas, increases safety and comfort for the most vulnerable users.

