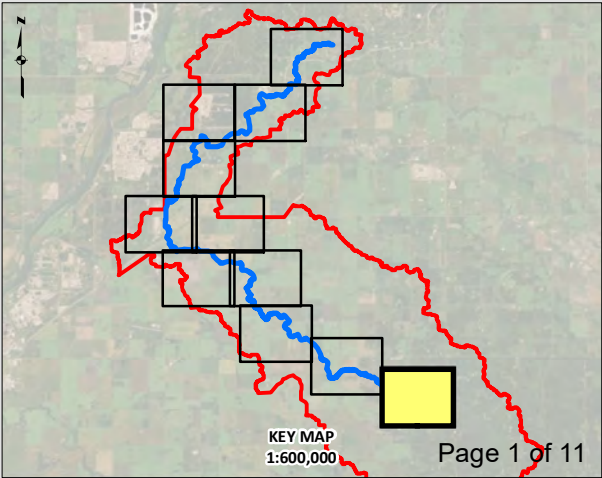
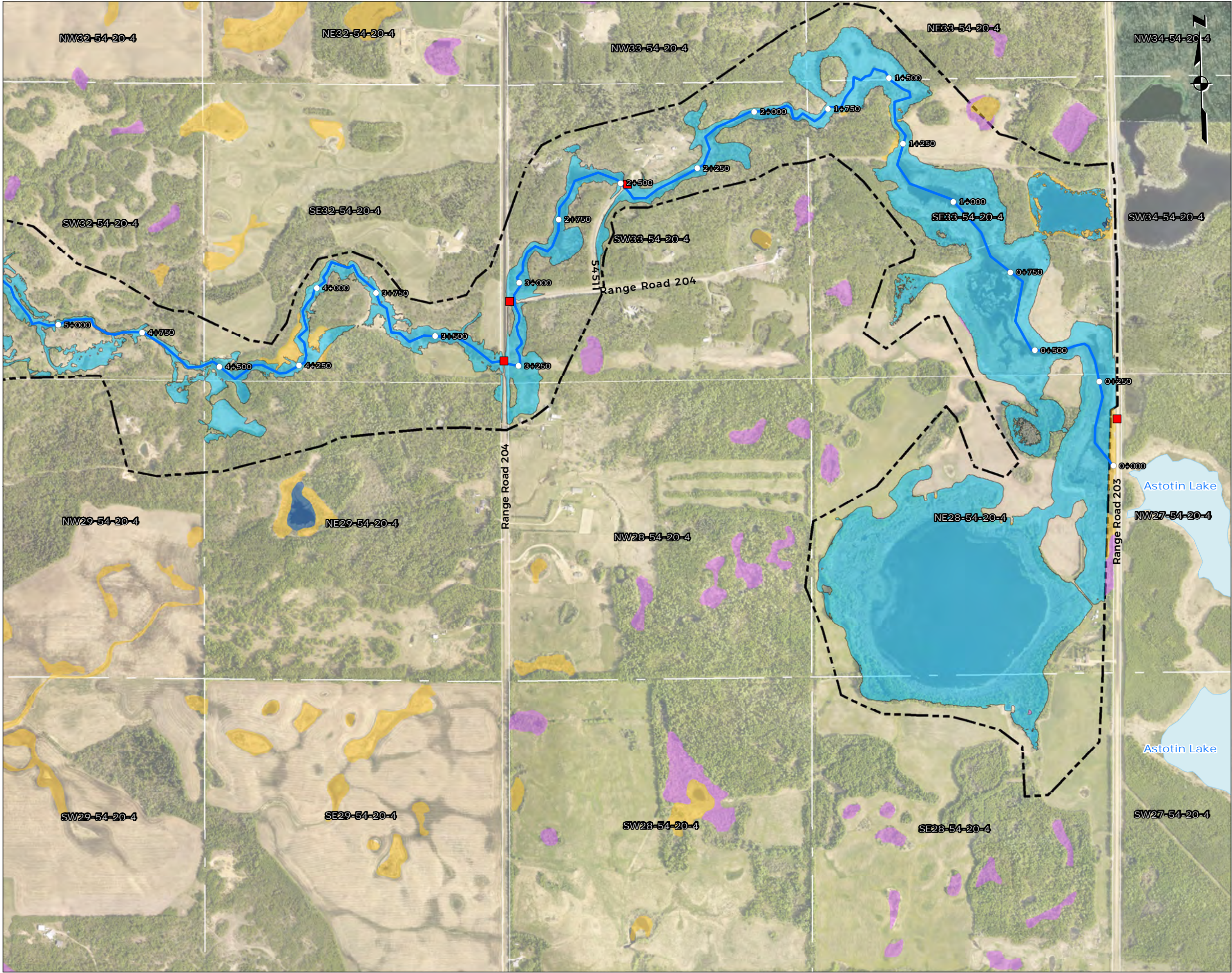


# Appendix I

## 100-Year Flood Inundation Map (Climate Change Included)







Legend

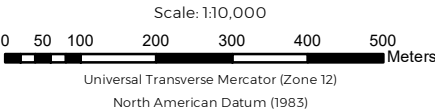
- Station Marker
- Structures
- ~ Astotin Creek
- ▭ Astotin Watershed
- - - Hydraulic Model Boundaries
- 100 Year Flood Inundation (Climate change included)
- Marsh
- Swamp
- Open Water
- Astotin Lake

Notes:

- 1) The flood maps were created using a two-dimensional hydrodynamic HEC-RAS model and a Digital Elevation Model (DEM) of the Astotin Creek Watershed
- 2) The DEM was created by combining the 2018 LiDAR data collected by Airborne Imaging with the bathymetric data collected by WSP in 2021.
- 3) The HEC-RAS model was calibrated for low-flow conditions but no calibration data for high flood events were available, limiting the model's accuracy at high flows.
- 4) The flood maps do not consider blockage of bridges and culverts that may develop during large flood events.
- 5) The flood maps only consider flooding due to Astotin Creek flows and do not include local impoundments due to flooding issues.

Astotin Creek Resiliency Study  
Drainage Master Plan

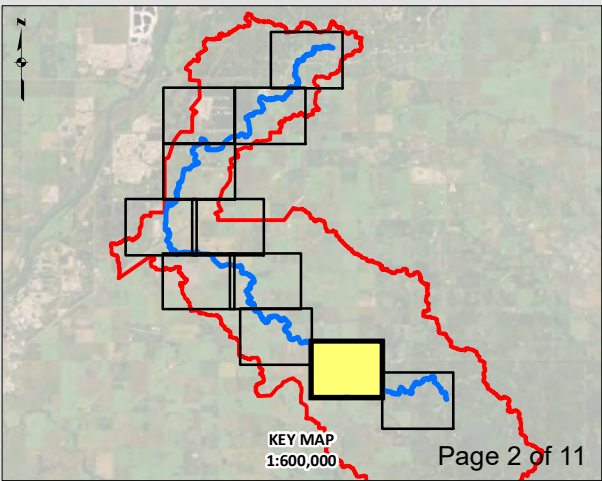
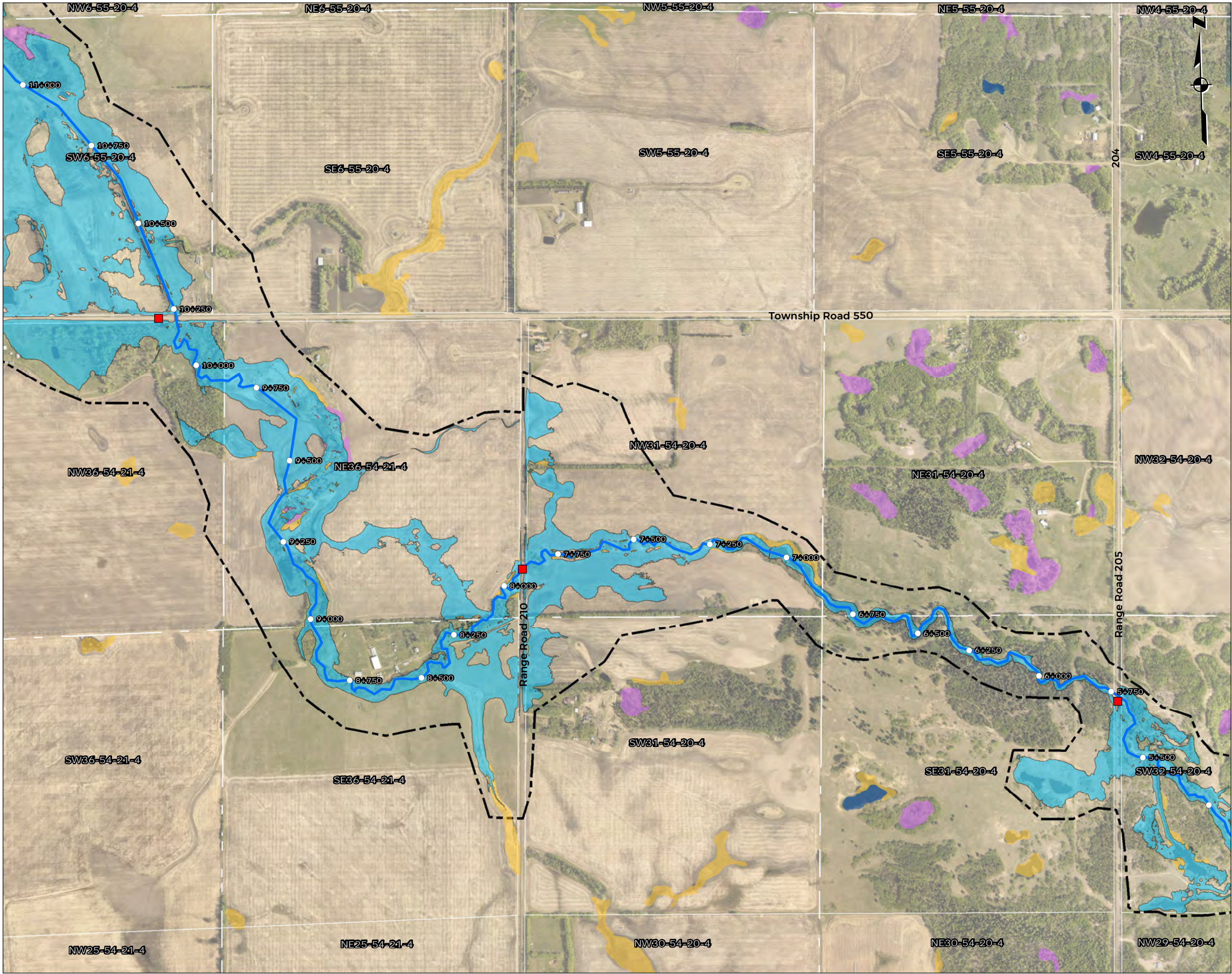
Appendix I: 100-Year Flood Inundation Map  
(Climate Change Included)  
Astotin Creek  
Alberta



Report By: AH WSP Job #: 211-03754-00  
Drawn by: JH Date: August 9, 2021  
Reviewed By: AH Office: Edmonton

Notes: Data provided by Altalis; Natural Resource Canada; ESRI



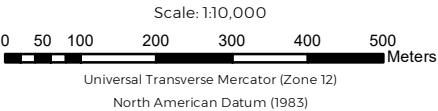


- Legend**
- Station Marker
  - Structures
  - ~ Astotin Creek
  - ▭ Astotin Watershed
  - - - Hydraulic Model Boundaries
  - 100 Year Flood Inundation (Climate change included)
  - Marsh
  - Swamp
  - Open Water

- Notes:**
- 1) The flood maps were created using a two-dimensional hydrodynamic HEC-RAS model and a Digital Elevation Model (DEM) of the Astotin Creek Watershed
  - 2) The DEM was created by combining the 2018 LiDAR data collected by Airborne Imaging with the bathymetric data collected by WSP in 2021.
  - 3) The HEC-RAS model was calibrated for low-flow conditions but no calibration data for high flood events were available, limiting the model's accuracy at high flows.
  - 4) The flood maps do not consider blockage of bridges and culverts that may develop during large flood events.
  - 5) The flood maps only consider flooding due to Astotin Creek flows and do not include local impoundments due to flooding issues.

**Astotin Creek Resiliency Study  
Drainage Master Plan**

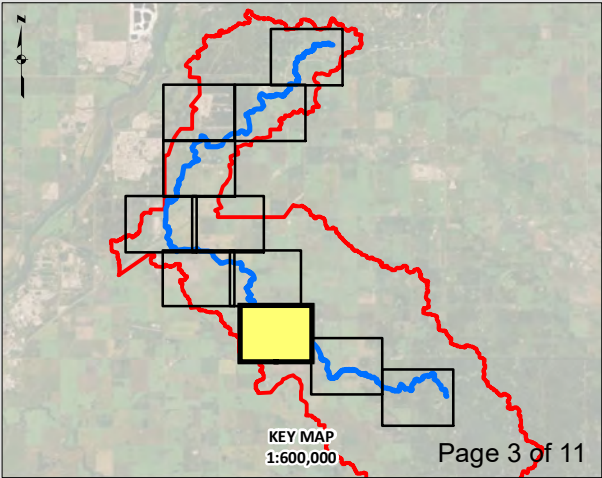
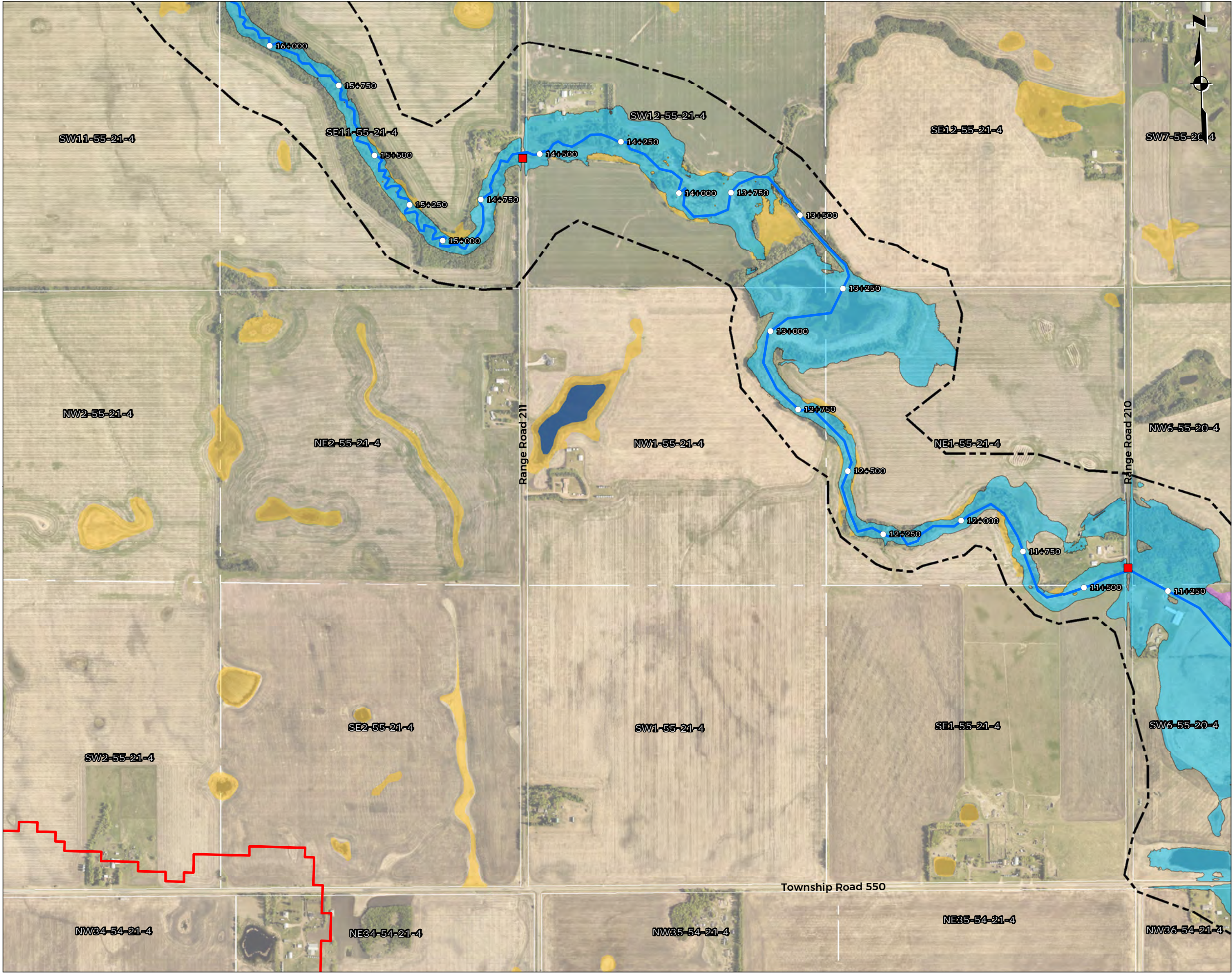
**Appendix I: 100-Year Flood Inundation Map  
(Climate Change Included)**  
**Astotin Creek  
Alberta**



Report By: AH WSP Job #: 211-03754-00  
Drawn by: JH Date: August 9, 2021  
Reviewed By: AH Office: Edmonton

Notes: Data provided by Altalis; Natural Resource Canada; ESRI



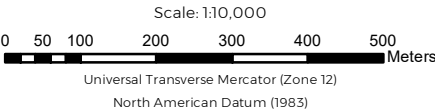


- Legend**
- Station Marker
  - Structures
  - ~ Astotin Creek
  - ▭ Astotin Watershed
  - - - Hydraulic Model Boundaries
  - 100 Year Flood Inundation (Climate change included)
  - Marsh
  - Swamp
  - Open Water

- Notes:**
- 1) The flood maps were created using a two-dimensional hydrodynamic HEC-RAS model and a Digital Elevation Model (DEM) of the Astotin Creek Watershed
  - 2) The DEM was created by combining the 2018 LiDAR data collected by Airborne Imaging with the bathymetric data collected by WSP in 2021.
  - 3) The HEC-RAS model was calibrated for low-flow conditions but no calibration data for high flood events were available, limiting the model's accuracy at high flows.
  - 4) The flood maps do not consider blockage of bridges and culverts that may develop during large flood events.
  - 5) The flood maps only consider flooding due to Astotin Creek flows and do not include local impoundments due to flooding issues.

*Astotin Creek Resiliency Study  
Drainage Master Plan*

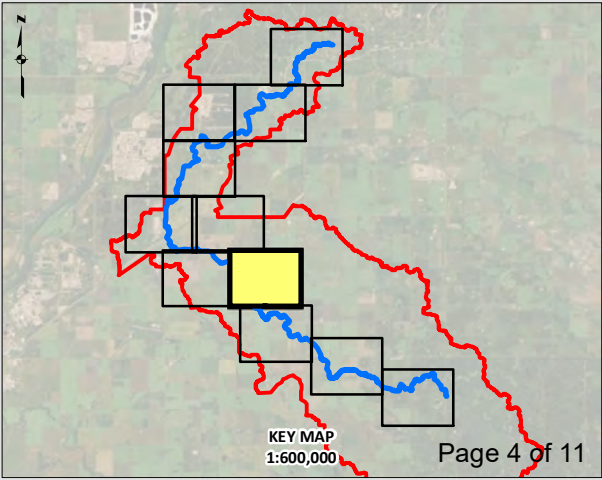
**Appendix I: 100-Year Flood Inundation Map  
(Climate Change Included)**  
**Astotin Creek  
Alberta**



Report By: AH    WSP Job #: 211-03754-00  
Drawn by: JH    Date: August 9, 2021  
Reviewed By: AH    Office: Edmonton

Notes: Data provided by Altalis; Natural Resource Canada; ESRI





Legend

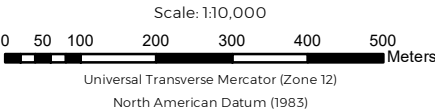
- Station Marker
- Structures
- Astotin Creek
- ▭ Astotin Watershed
- - - Hydraulic Model Boundaries
- 100 Year Flood Inundation (Climate change included)
- Marsh
- Swamp
- Open Water

Notes:

- 1) The flood maps were created using a two-dimensional hydrodynamic HEC-RAS model and a Digital Elevation Model (DEM) of the Astotin Creek Watershed
- 2) The DEM was created by combining the 2018 LiDAR data collected by Airborne Imaging with the bathymetric data collected by WSP in 2021.
- 3) The HEC-RAS model was calibrated for low-flow conditions but no calibration data for high flood events were available, limiting the model's accuracy at high flows.
- 4) The flood maps do not consider blockage of bridges and culverts that may develop during large flood events.
- 5) The flood maps only consider flooding due to Astotin Creek flows and do not include local impoundments due to flooding issues.

Astotin Creek Resiliency Study  
Drainage Master Plan

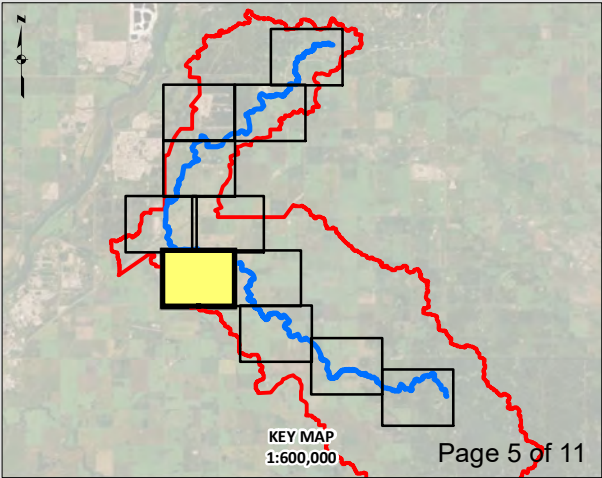
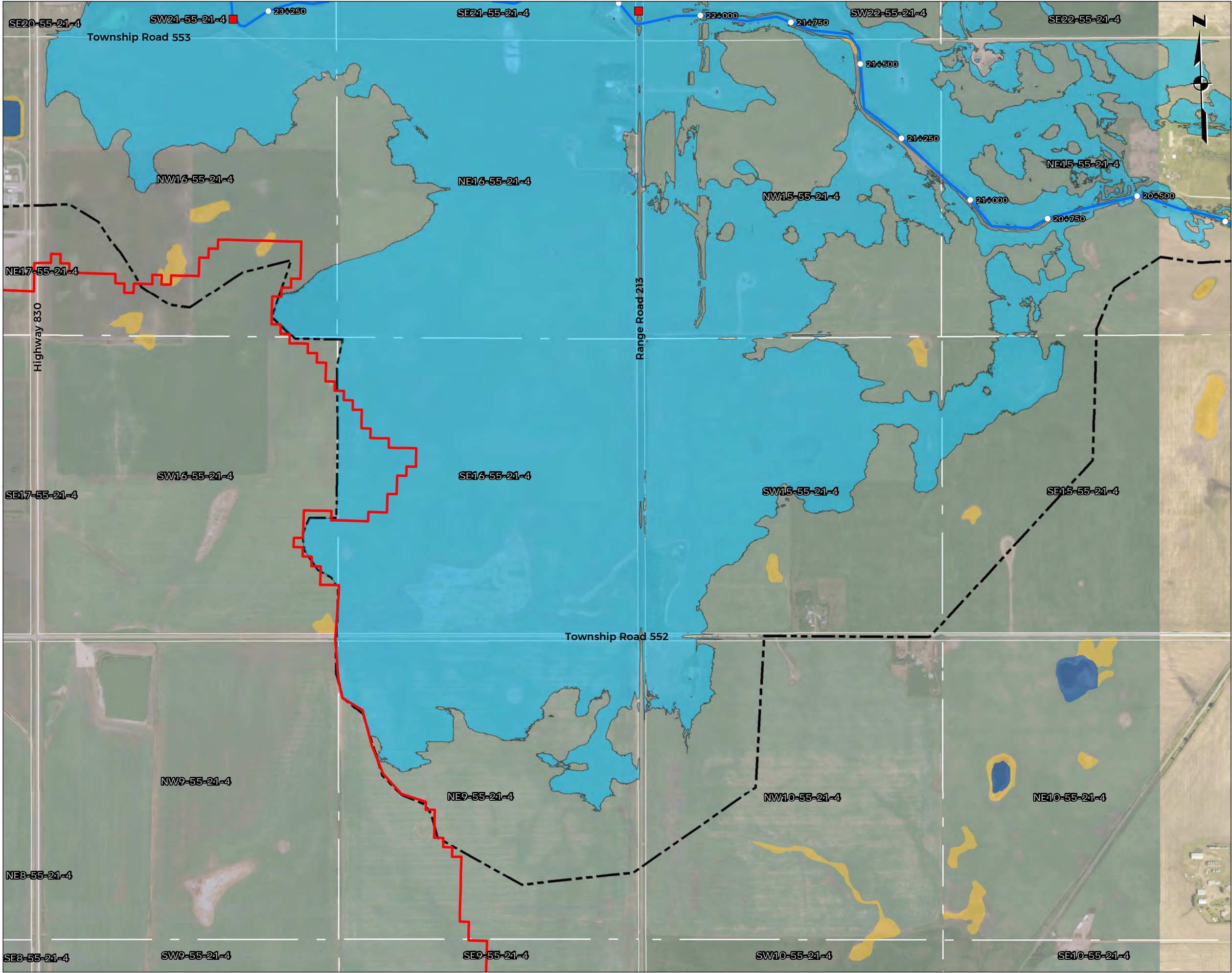
Appendix I: 100-Year Flood Inundation Map  
(Climate Change Included)  
Astotin Creek  
Alberta



Report By: AH WSP Job #: 211-03754-00  
Drawn by: JH Date: August 9, 2021  
Reviewed by: AH Office: Edmonton

Notes: Data provided by Altalis; Natural Resource Canada; ESRI





**Legend**

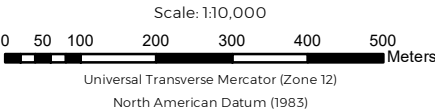
- Station Marker
- Structures
- ~ Astotin Creek
- ▭ Astotin Watershed
- - - Hydraulic Model Boundaries
- 100 Year Flood Inundation (Climate change included)
- Marsh
- Swamp
- Open Water

**Notes:**

- 1) The flood maps were created using a two-dimensional hydrodynamic HEC-RAS model and a Digital Elevation Model (DEM) of the Astotin Creek Watershed
- 2) The DEM was created by combining the 2018 LiDAR data collected by Airborne Imaging with the bathymetric data collected by WSP in 2021.
- 3) The HEC-RAS model was calibrated for low-flow conditions but no calibration data for high flood events were available, limiting the model's accuracy at high flows.
- 4) The flood maps do not consider blockage of bridges and culverts that may develop during large flood events.
- 5) The flood maps only consider flooding due to Astotin Creek flows and do not include local impoundments due to flooding issues.

**Astotin Creek Resiliency Study  
Drainage Master Plan**

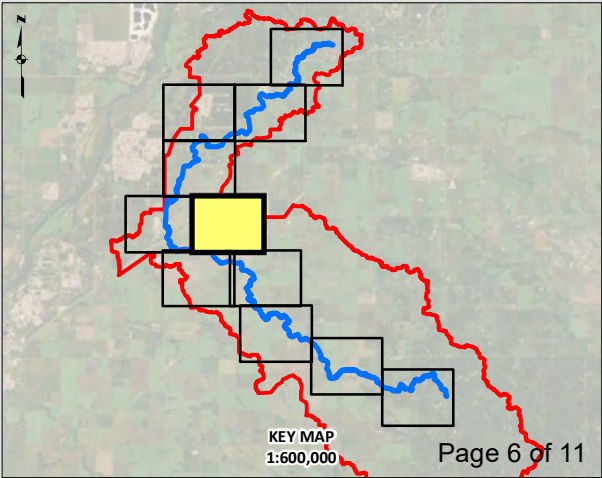
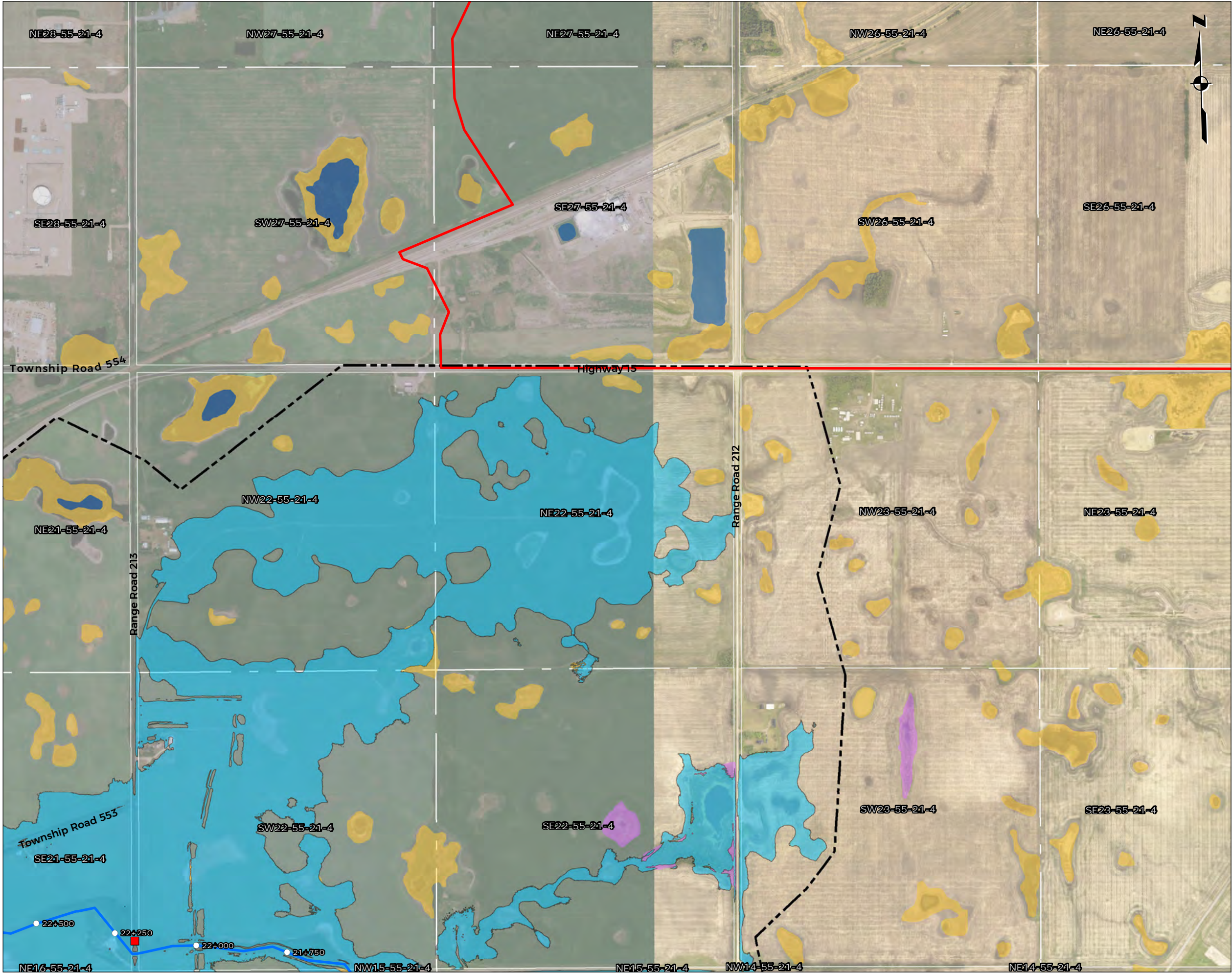
**Appendix I: 100-Year Flood Inundation Map  
(Climate Change Included)**  
**Astotin Creek  
Alberta**



Report By: AH WSP Job #: 211-03754-00  
Drawn by: JH Date: August 9, 2021  
Reviewed By: AH Office: Edmonton

Notes: Data provided by Altalis; Natural Resource Canada; ESRI





**Legend**

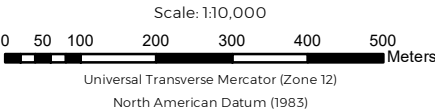
- Station Marker
- Structures
- ~ Astotin Creek
- ▭ Astotin Watershed
- ▭ Hydraulic Model Boundaries
- 100 Year Flood Inundation (Climate change included)
- Marsh
- Swamp
- Open Water

**Notes:**

- 1) The flood maps were created using a two-dimensional hydrodynamic HEC-RAS model and a Digital Elevation Model (DEM) of the Astotin Creek Watershed
- 2) The DEM was created by combining the 2018 LiDAR data collected by Airborne Imaging with the bathymetric data collected by WSP in 2021.
- 3) The HEC-RAS model was calibrated for low-flow conditions but no calibration data for high flood events were available, limiting the model's accuracy at high flows.
- 4) The flood maps do not consider blockage of bridges and culverts that may develop during large flood events.
- 5) The flood maps only consider flooding due to Astotin Creek flows and do not include local impoundments due to flooding issues.

**Astotin Creek Resiliency Study  
Drainage Master Plan**

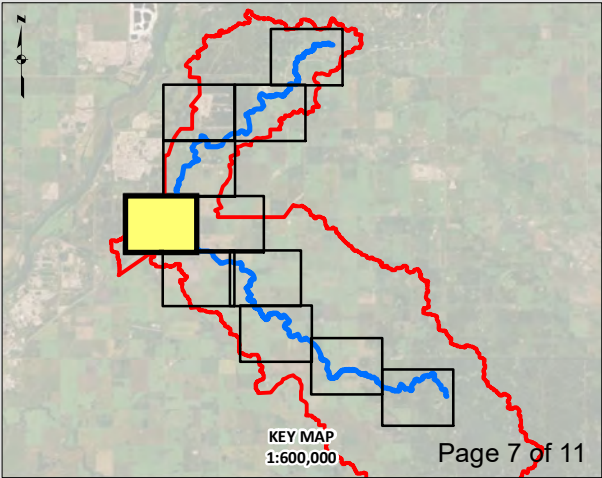
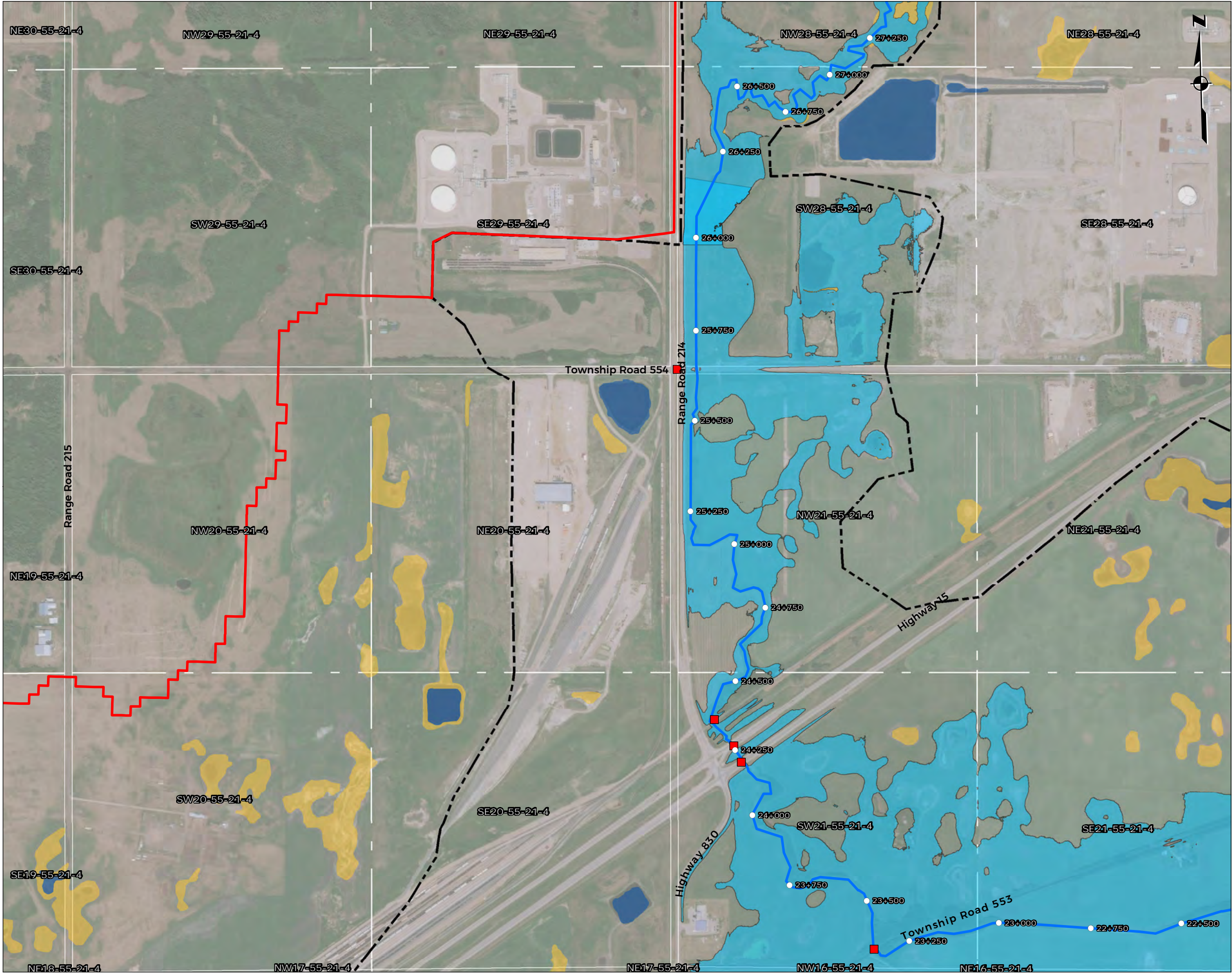
**Appendix I: 100-Year Flood Inundation Map  
(Climate Change Included)**  
**Astotin Creek  
Alberta**



Report By: AH WSP Job #: 211-03754-00  
Drawn by: JH Date: August 9, 2021  
Reviewed By: AH Office: Edmonton

Notes: Data provided by Altalis; Natural Resource Canada; ESRI



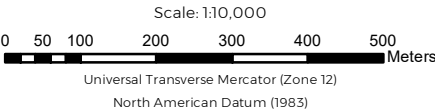


- Legend**
- Station Marker
  - Structures
  - ~ Astotin Creek
  - ▭ Astotin Watershed
  - - - Hydraulic Model Boundaries
  - 100 Year Flood Inundation (Climate change included)
  - Marsh
  - Swamp
  - Open Water

- Notes:**
- 1) The flood maps were created using a two-dimensional hydrodynamic HEC-RAS model and a Digital Elevation Model (DEM) of the Astotin Creek Watershed
  - 2) The DEM was created by combining the 2018 LiDAR data collected by Airborne Imaging with the bathymetric data collected by WSP in 2021.
  - 3) The HEC-RAS model was calibrated for low-flow conditions but no calibration data for high flood events were available, limiting the model's accuracy at high flows.
  - 4) The flood maps do not consider blockage of bridges and culverts that may develop during large flood events.
  - 5) The flood maps only consider flooding due to Astotin Creek flows and do not include local impoundments due to flooding issues.

*Astotin Creek Resiliency Study  
Drainage Master Plan*

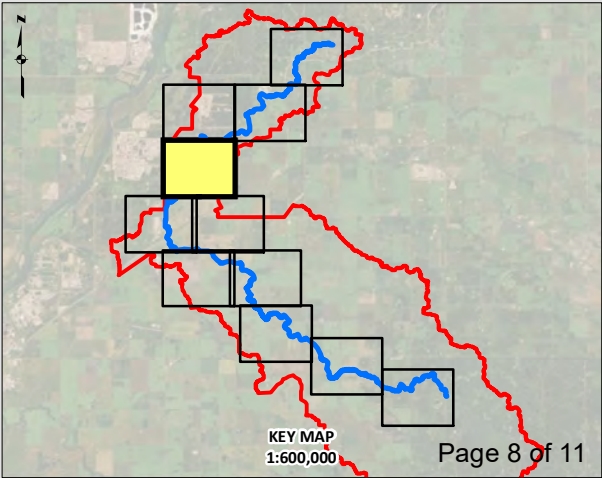
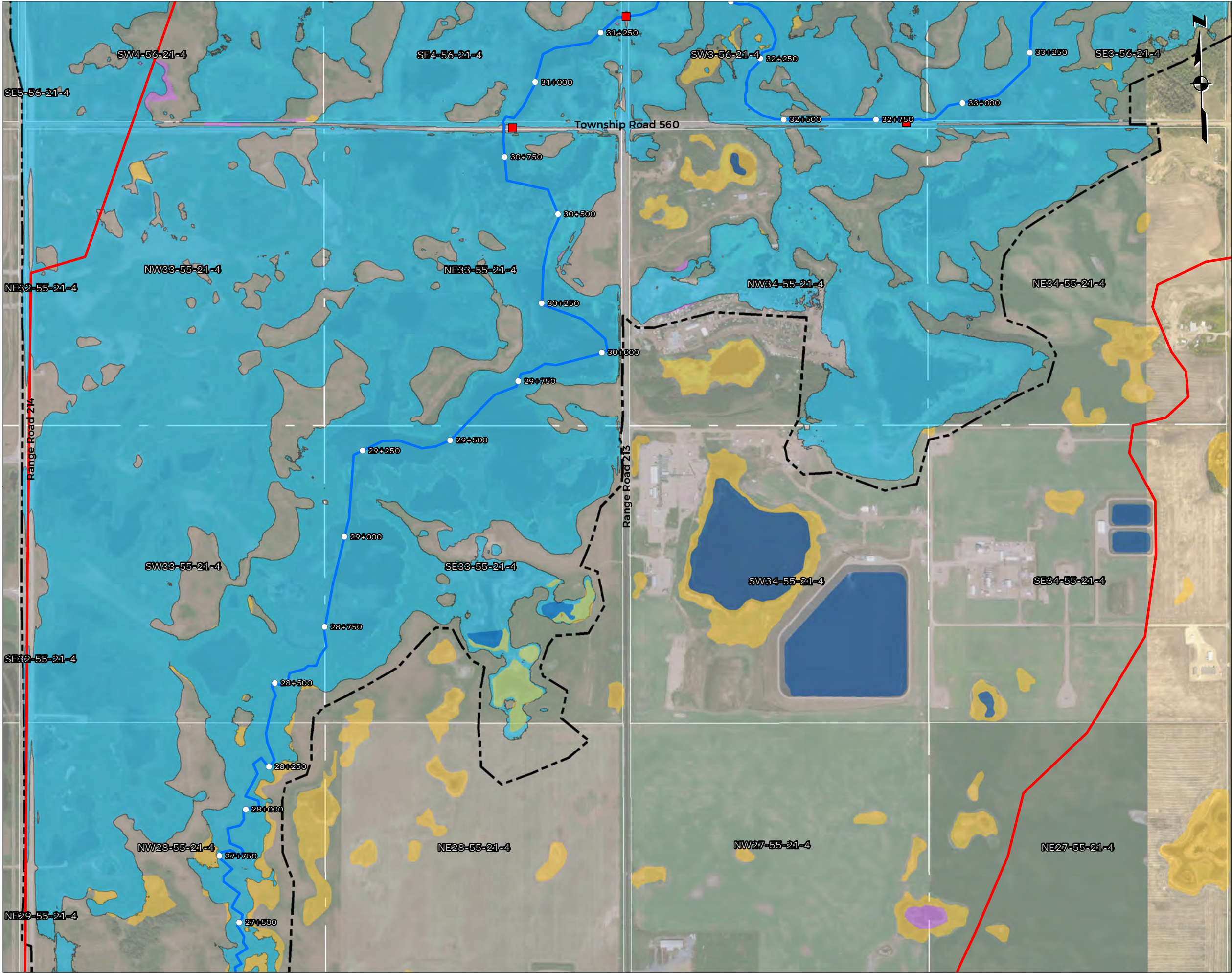
**Appendix I: 100-Year Flood Inundation Map  
(Climate Change Included)**  
**Astotin Creek  
Alberta**



Report By: AH    WSP Job #: 211-03754-00  
Drawn by: JH    Date: August 9, 2021  
Reviewed By: AH    Office: Edmonton

Notes: Data provided by Altalis; Natural Resource Canada; ESRI



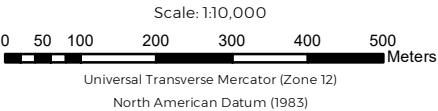


- Legend**
- Station Marker
  - Structures
  - ~ Astotin Creek
  - ▭ Astotin Watershed
  - - - Hydraulic Model Boundaries
  - 100 Year Flood Inundation (Climate change included)
  - Marsh
  - Swamp
  - Open Water

- Notes:**
- 1) The flood maps were created using a two-dimensional hydrodynamic HEC-RAS model and a Digital Elevation Model (DEM) of the Astotin Creek Watershed
  - 2) The DEM was created by combining the 2018 LiDAR data collected by Airborne Imaging with the bathymetric data collected by WSP in 2021.
  - 3) The HEC-RAS model was calibrated for low-flow conditions but no calibration data for high flood events were available, limiting the model's accuracy at high flows.
  - 4) The flood maps do not consider blockage of bridges and culverts that may develop during large flood events.
  - 5) The flood maps only consider flooding due to Astotin Creek flows and do not include local impoundments due to flooding issues.

*Astotin Creek Resiliency Study  
Drainage Master Plan*

**Appendix I: 100-Year Flood Inundation Map  
(Climate Change Included)**  
**Astotin Creek  
Alberta**



Report By: AH

Drawn by: JH

Reviewed By: AH

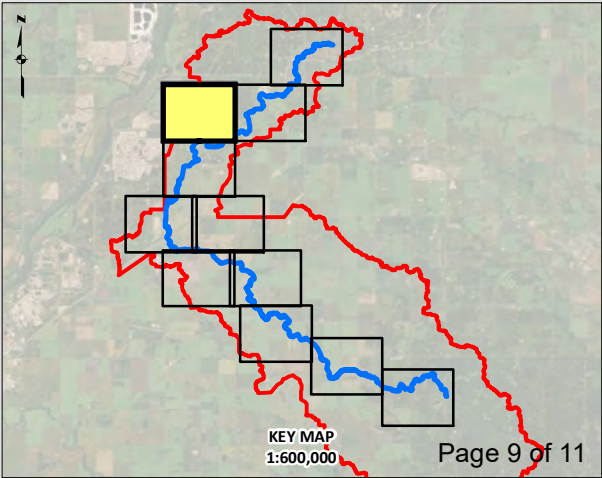
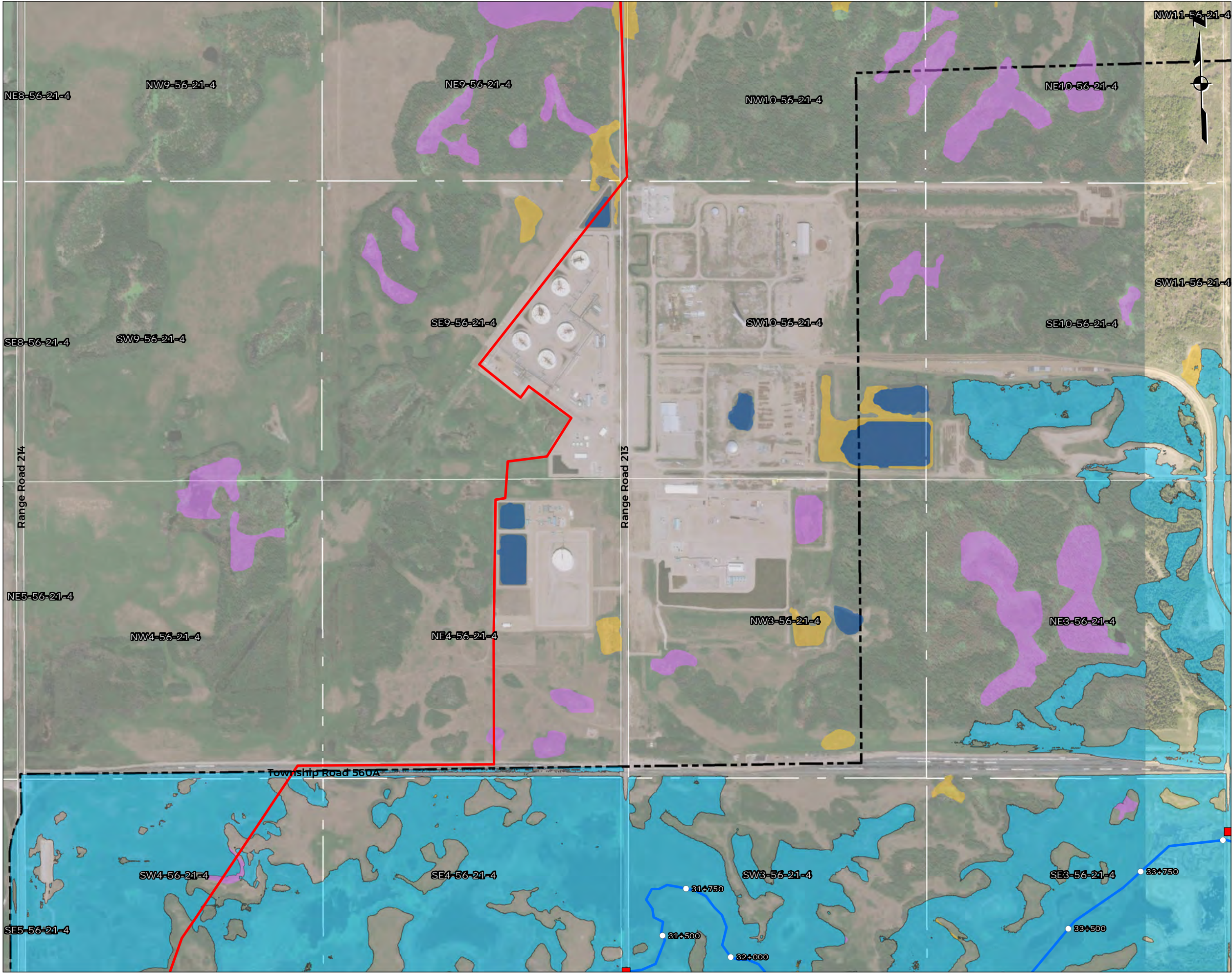
WSP Job #: 211-03754-00

Date: August 9, 2021

Office: Edmonton

Notes: Data provided by Altalis; Natural Resource Canada; ESRI



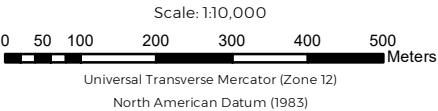


- Legend**
- Station Marker
  - Structures
  - Astotin Creek
  - Astotin Watershed
  - Hydraulic Model Boundaries
  - 100 Year Flood Inundation (Climate change included)
  - Marsh
  - Swamp
  - Open Water

- Notes:**
- 1) The flood maps were created using a two-dimensional hydrodynamic HEC-RAS model and a Digital Elevation Model (DEM) of the Astotin Creek Watershed
  - 2) The DEM was created by combining the 2018 LiDAR data collected by Airborne Imaging with the bathymetric data collected by WSP in 2021.
  - 3) The HEC-RAS model was calibrated for low-flow conditions but no calibration data for high flood events were available, limiting the model's accuracy at high flows.
  - 4) The flood maps do not consider blockage of bridges and culverts that may develop during large flood events.
  - 5) The flood maps only consider flooding due to Astotin Creek flows and do not include local impoundments due to flooding issues.

**Astotin Creek Resiliency Study  
Drainage Master Plan**

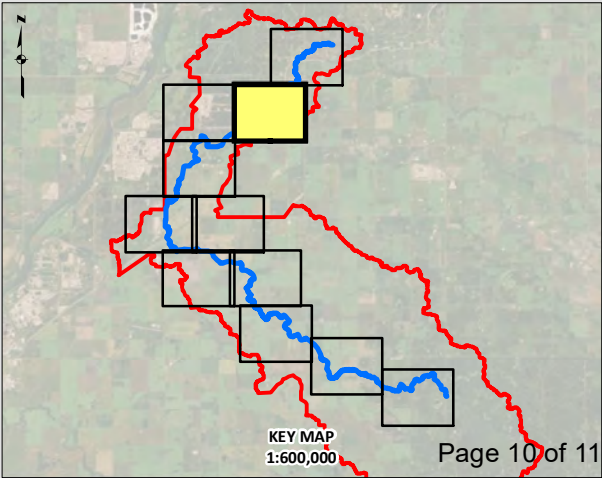
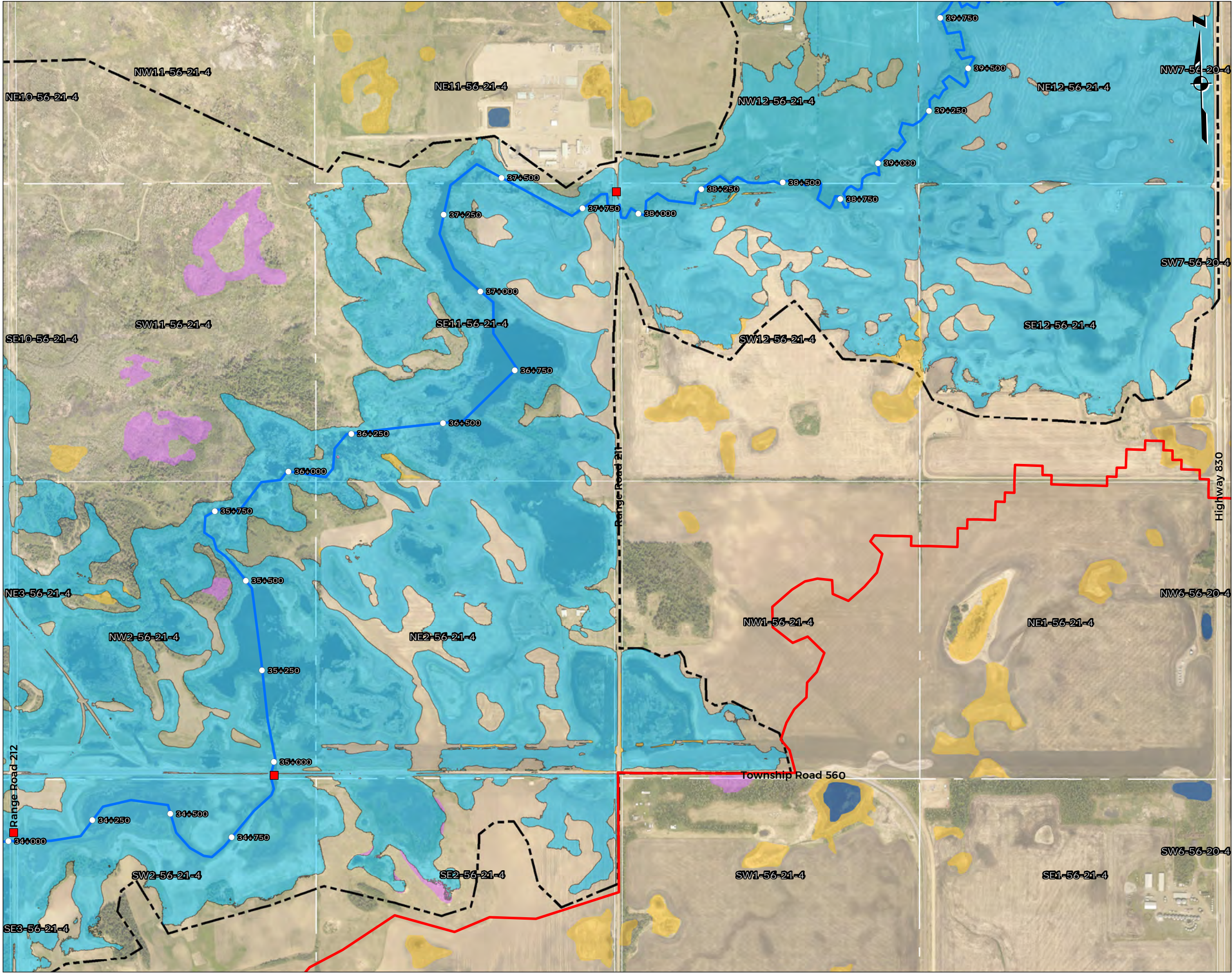
**Appendix I: 100-Year Flood Inundation Map  
(Climate Change Included)**  
**Astotin Creek  
Alberta**



Report By: AH WSP Job #: 211-03754-00  
Drawn by: JH Date: August 9, 2021  
Reviewed By: AH Office: Edmonton

Notes: Data provided by Altalis; Natural Resource Canada; ESRI



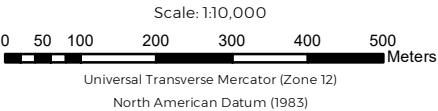


- Legend**
- Station Marker
  - Structures
  - ~ Astotin Creek
  - ▭ Astotin Watershed
  - - - Hydraulic Model Boundaries
  - 100 Year Flood Inundation (Climate change included)
  - Marsh
  - Swamp
  - Open Water

- Notes:**
- 1) The flood maps were created using a two-dimensional hydrodynamic HEC-RAS model and a Digital Elevation Model (DEM) of the Astotin Creek Watershed
  - 2) The DEM was created by combining the 2018 LiDAR data collected by Airborne Imaging with the bathymetric data collected by WSP in 2021.
  - 3) The HEC-RAS model was calibrated for low-flow conditions but no calibration data for high flood events were available, limiting the model's accuracy at high flows.
  - 4) The flood maps do not consider blockage of bridges and culverts that may develop during large flood events.
  - 5) The flood maps only consider flooding due to Astotin Creek flows and do not include local impoundments due to flooding issues.

**Astotin Creek Resiliency Study  
Drainage Master Plan**

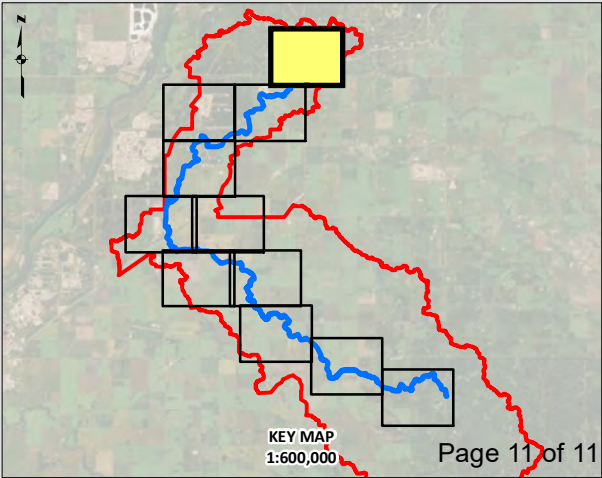
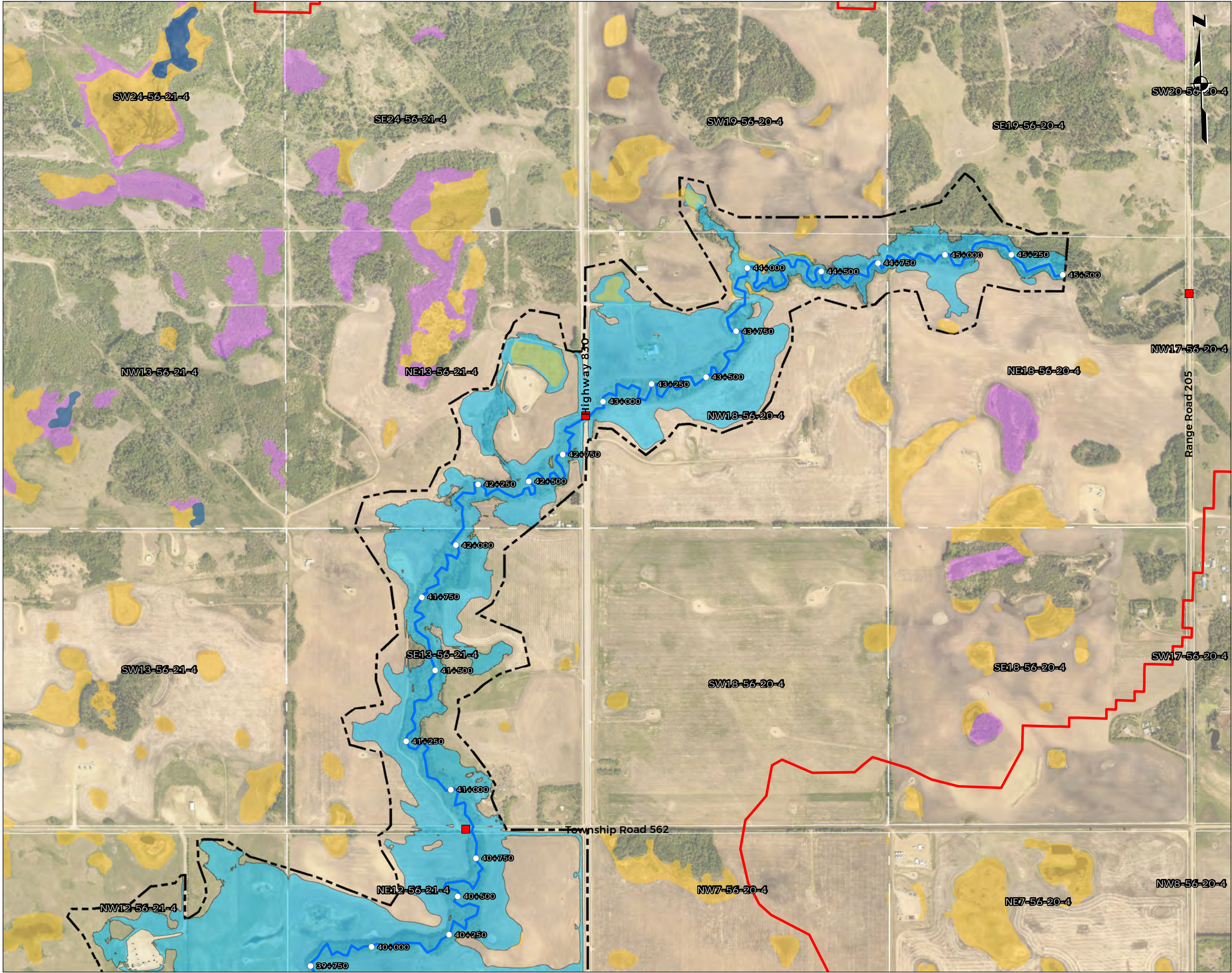
**Appendix I: 100-Year Flood Inundation Map  
(Climate Change Included)**  
**Astotin Creek  
Alberta**



Report By: AH WSP Job #: 211-03754-00  
Drawn by: JH Date: August 9, 2021  
Reviewed By: AH Office: Edmonton

Notes: Data provided by Altalis; Natural Resource Canada; ESRI



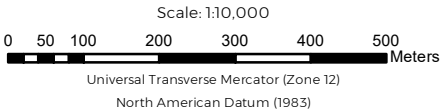


- Legend**
- Station Marker
  - Structures
  - Astotin Creek
  - ▭ Astotin Watershed
  - - - Hydraulic Model Boundaries
  - 100 Year Flood Inundation (Climate change included)
  - Marsh
  - Swamp
  - Open Water

- Notes:**
- 1) The flood maps were created using a two-dimensional hydrodynamic HEC-RAS model and a Digital Elevation Model (DEM) of the Astotin Creek Watershed
  - 2) The DEM was created by combining the 2018 LiDAR data collected by Airborne Imaging with the bathymetric data collected by WSP in 2021.
  - 3) The HEC-RAS model was calibrated for low-flow conditions but no calibration data for high flood events were available, limiting the model's accuracy at high flows.
  - 4) The flood maps do not consider blockage of bridges and culverts that may develop during large flood events.
  - 5) The flood maps only consider flooding due to Astotin Creek flows and do not include local impoundments due to flooding issues.

**Astotin Creek Resiliency Study  
Drainage Master Plan**

**Appendix I: 100-Year Flood Inundation Map  
(Climate Change Included)**  
**Astotin Creek  
Alberta**





Report By: AH  
Drawn by: JH  
Reviewed By: AH

WSP Job #: 211-03754-00  
Date: August 9, 2021  
Office: Edmonton

Notes: Data provided by Altalis; Natural Resource Canada; ESRI