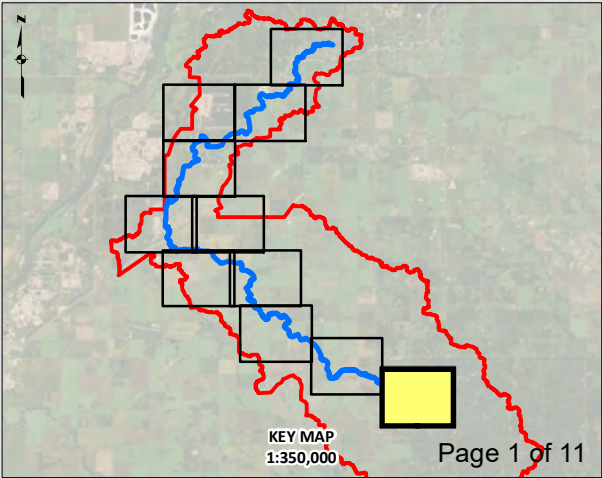
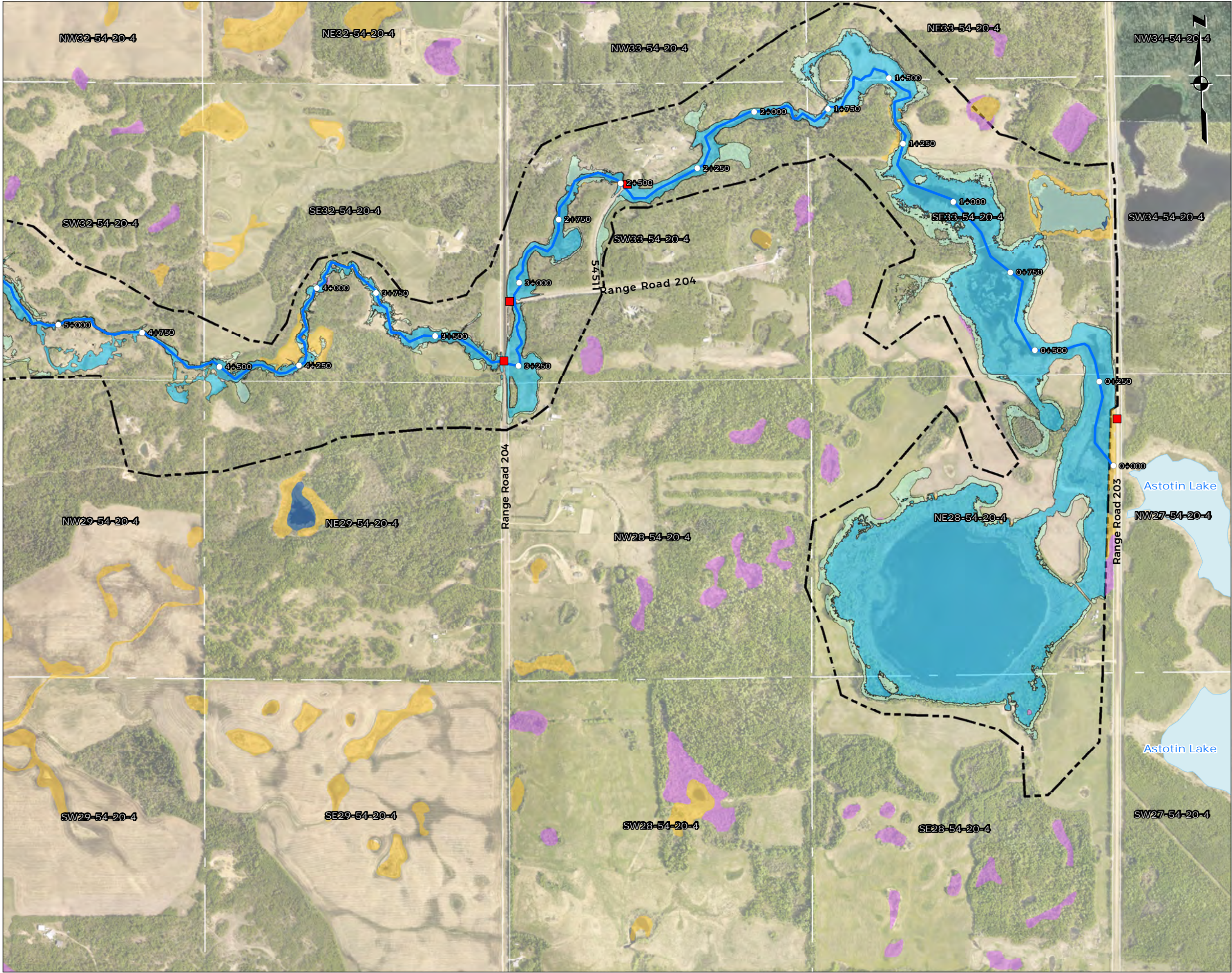


# Appendix H

## 100-Year Flood Hazard Maps







**Legend**

- Station Marker
- Structures
- ~ Astotin Creek
- ▭ Astotin Watershed
- - - Hydraulic Model Boundaries
- ~ Floodway
- ~ Flood Fringe
- ~ Marsh
- ~ Swamp
- ~ Open Water
- ~ Astotin Lake

**Notes:**

- 1) The flood maps were created using a two-dimensional hydrodynamic HEC-RAS model and a Digital Elevation Model (DEM) of the Astotin Creek Watershed
- 2) The DEM was created by combining the 2018 LiDAR data collected by Airborne Imaging with the bathymetric data collected by WSP in 2021.
- 3) The HEC-RAS model was calibrated for low-flow conditions but no calibration data for high flood events were available, limiting the model's accuracy at high flows.
- 4) The flood maps do not consider blockage of bridges and culverts that may develop during large flood events.
- 5) The flood maps only consider flooding due to Astotin Creek flows and do not include local impoundments due to flooding issues.

**Astotin Creek Resiliency Study  
Drainage Master Plan**

**Appendix H: 100-Year Flood Hazard Map**

**Astotin Creek  
Alberta**

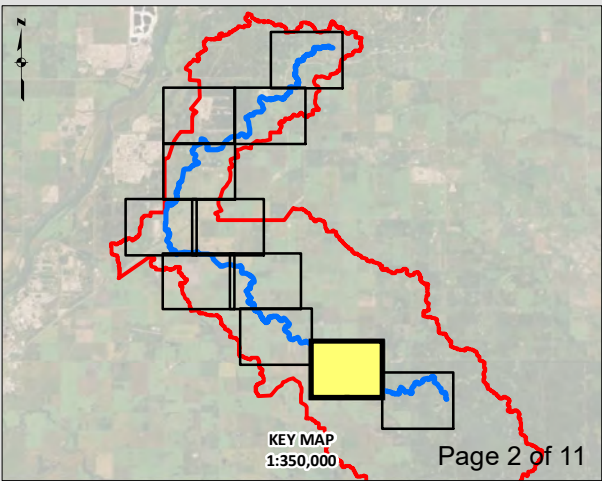
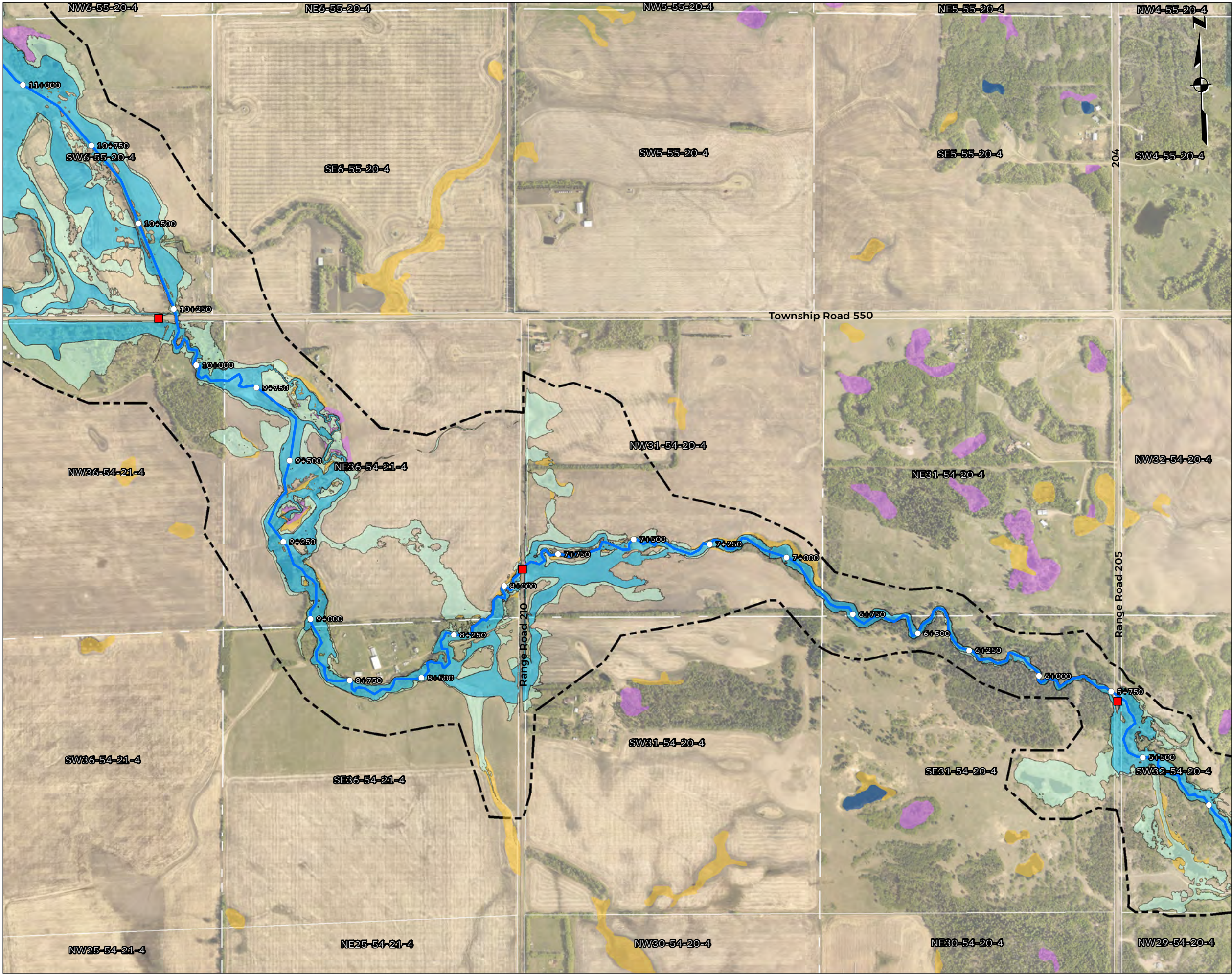
Scale: 1:10,000



Report By: AH WSP Job #: 211-03754-00  
Drawn by: JH Date: August 9, 2021  
Reviewed By: AH Office: Edmonton

Notes: Data provided by Altalis; Natural Resource Canada; ESRI





**Legend**

- Station Marker
- Structures
- ~ Astotin Creek
- ▭ Astotin Watershed
- - - Hydraulic Model Boundaries
- Light Blue Floodway
- Light Green Flood Fringe
- Yellow Marsh
- Purple Swamp
- Dark Blue Open Water

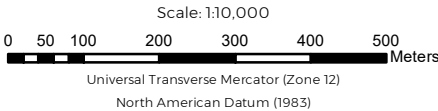
**Notes:**

- 1) The flood maps were created using a two-dimensional hydrodynamic HEC-RAS model and a Digital Elevation Model (DEM) of the Astotin Creek Watershed
- 2) The DEM was created by combining the 2018 LiDAR data collected by Airborne Imaging with the bathymetric data collected by WSP in 2021.
- 3) The HEC-RAS model was calibrated for low-flow conditions but no calibration data for high flood events were available, limiting the model's accuracy at high flows.
- 4) The flood maps do not consider blockage of bridges and culverts that may develop during large flood events.
- 5) The flood maps only consider flooding due to Astotin Creek flows and do not include local impoundments due to flooding issues.

**Astotin Creek Resiliency Study  
Drainage Master Plan**

**Appendix H: 100-Year Flood Hazard Map**

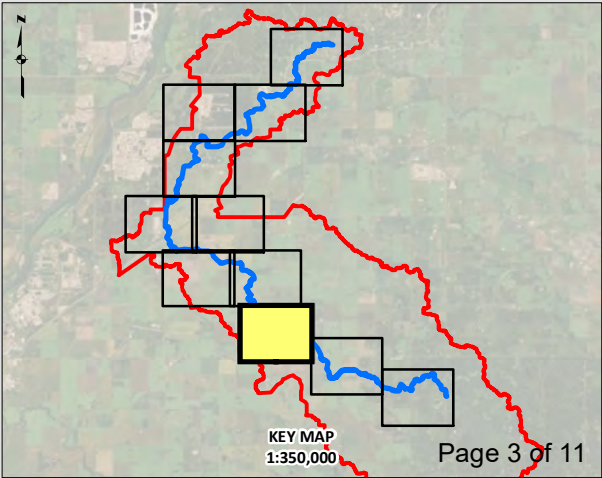
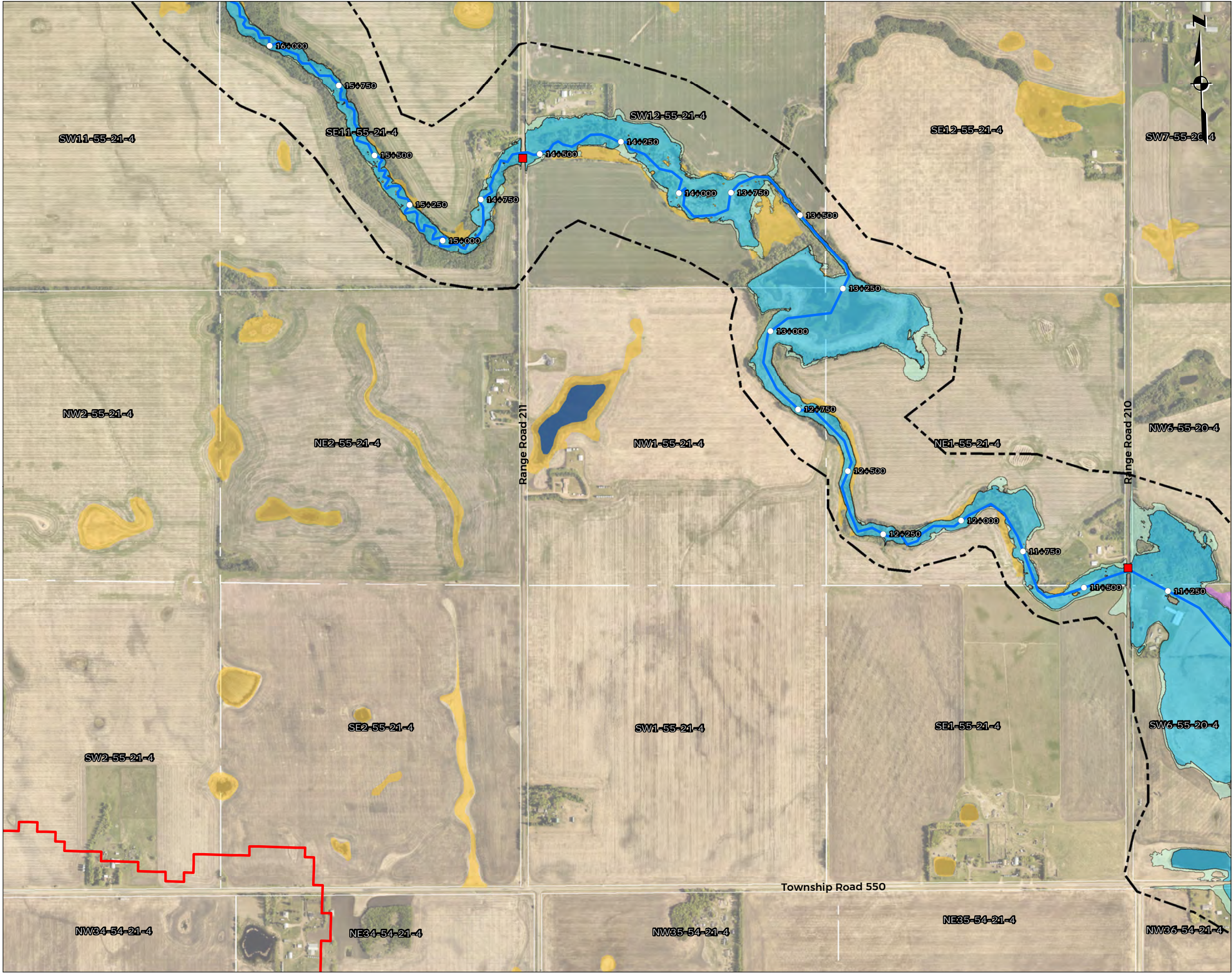
**Astotin Creek  
Alberta**



Report By: AH WSP Job #: 211-03754-00  
Drawn by: JH Date: August 9, 2021  
Reviewed By: AH Office: Edmonton

Notes: Data provided by Altalis; Natural Resource Canada; ESRI





**Legend**

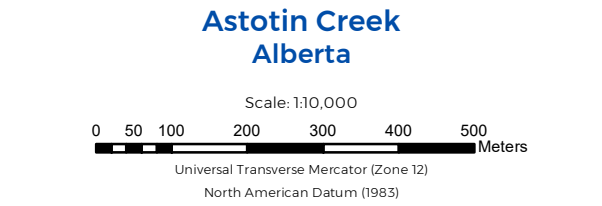
- Station Marker
- Structures
- Astotin Creek
- Astotin Watershed
- Hydraulic Model Boundaries
- Floodway
- Flood Fringe
- Marsh
- Swamp
- Open Water

**Notes:**

- 1) The flood maps were created using a two-dimensional hydrodynamic HEC-RAS model and a Digital Elevation Model (DEM) of the Astotin Creek Watershed
- 2) The DEM was created by combining the 2018 LiDAR data collected by Airborne Imaging with the bathymetric data collected by WSP in 2021.
- 3) The HEC-RAS model was calibrated for low-flow conditions but no calibration data for high flood events were available, limiting the model's accuracy at high flows.
- 4) The flood maps do not consider blockage of bridges and culverts that may develop during large flood events.
- 5) The flood maps only consider flooding due to Astotin Creek flows and do not include local impoundments due to flooding issues.

## Astotin Creek Resiliency Study Drainage Master Plan

### Appendix H: 100-Year Flood Hazard Map

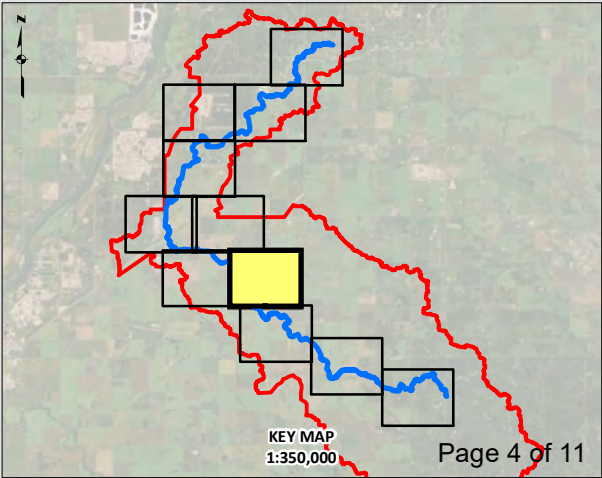


**wsp**

Report By: AH WSP Job #: 211-03754-00  
 Drawn by: JH Date: August 9, 2021  
 Reviewed By: AH Office: Edmonton

Notes: Data provided by Altalis; Natural Resource Canada; ESRI





**Legend**

- Station Marker
- Structures
- ~ Astotin Creek
- ▭ Astotin Watershed
- - - Hydraulic Model Boundaries
- ~ Floodway
- ~ Flood Fringe
- ~ Marsh
- ~ Swamp
- ~ Open Water

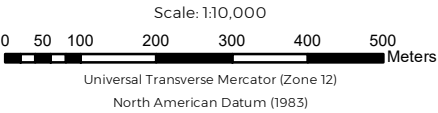
**Notes:**

- 1) The flood maps were created using a two-dimensional hydrodynamic HEC-RAS model and a Digital Elevation Model (DEM) of the Astotin Creek Watershed
- 2) The DEM was created by combining the 2018 LiDAR data collected by Airborne Imaging with the bathymetric data collected by WSP in 2021.
- 3) The HEC-RAS model was calibrated for low-flow conditions but no calibration data for high flood events were available, limiting the model's accuracy at high flows.
- 4) The flood maps do not consider blockage of bridges and culverts that may develop during large flood events.
- 5) The flood maps only consider flooding due to Astotin Creek flows and do not include local impoundments due to flooding issues.

**Astotin Creek Resiliency Study  
Drainage Master Plan**

**Appendix H: 100-Year Flood Hazard Map**

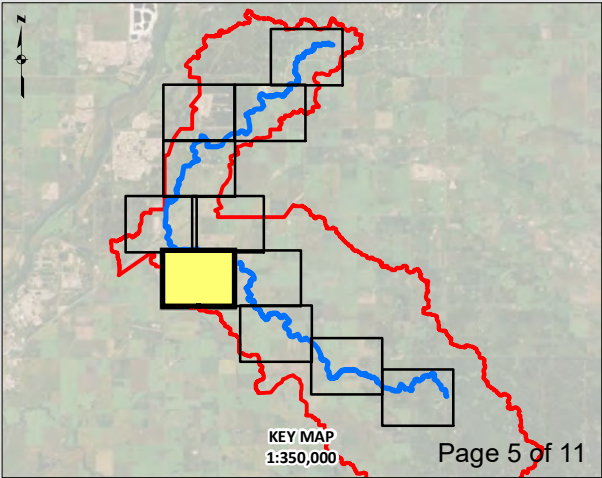
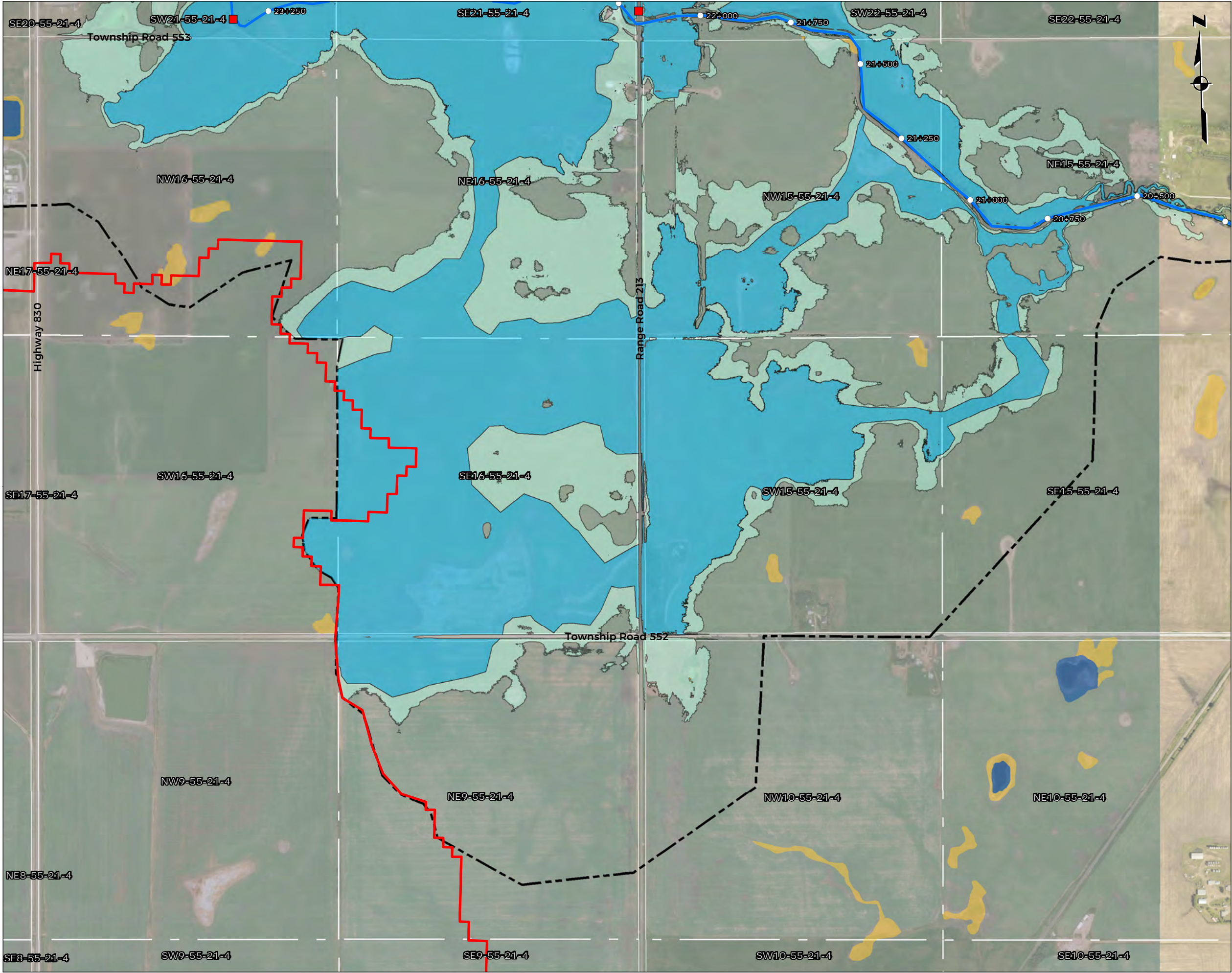
**Astotin Creek  
Alberta**



Report By: AH WSP Job #: 211-03754-00  
Drawn by: JH Date: August 9, 2021  
Reviewed By: AH Office: Edmonton

Notes: Data provided by Altalis; Natural Resource Canada; ESRI





**Legend**

- Station Marker
- Structures
- ~ Astotin Creek
- ▭ Astotin Watershed
- - - Hydraulic Model Boundaries
- Light Blue Floodway
- Dark Blue Flood Fringe
- Yellow Marsh
- Purple Swamp
- Dark Blue Open Water

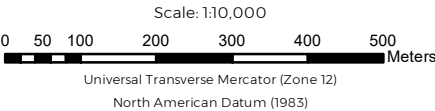
**Notes:**

- 1) The flood maps were created using a two-dimensional hydrodynamic HEC-RAS model and a Digital Elevation Model (DEM) of the Astotin Creek Watershed
- 2) The DEM was created by combining the 2018 LiDAR data collected by Airborne Imaging with the bathymetric data collected by WSP in 2021.
- 3) The HEC-RAS model was calibrated for low-flow conditions but no calibration data for high flood events were available, limiting the model's accuracy at high flows.
- 4) The flood maps do not consider blockage of bridges and culverts that may develop during large flood events.
- 5) The flood maps only consider flooding due to Astotin Creek flows and do not include local impoundments due to flooding issues.

**Astotin Creek Resiliency Study  
Drainage Master Plan**

**Appendix H: 100-Year Flood Hazard Map**

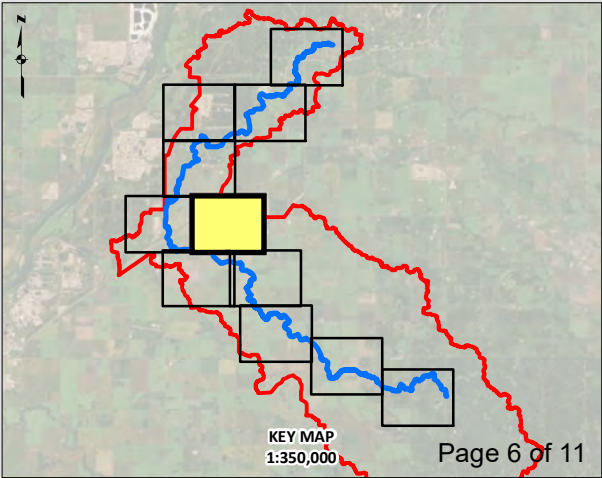
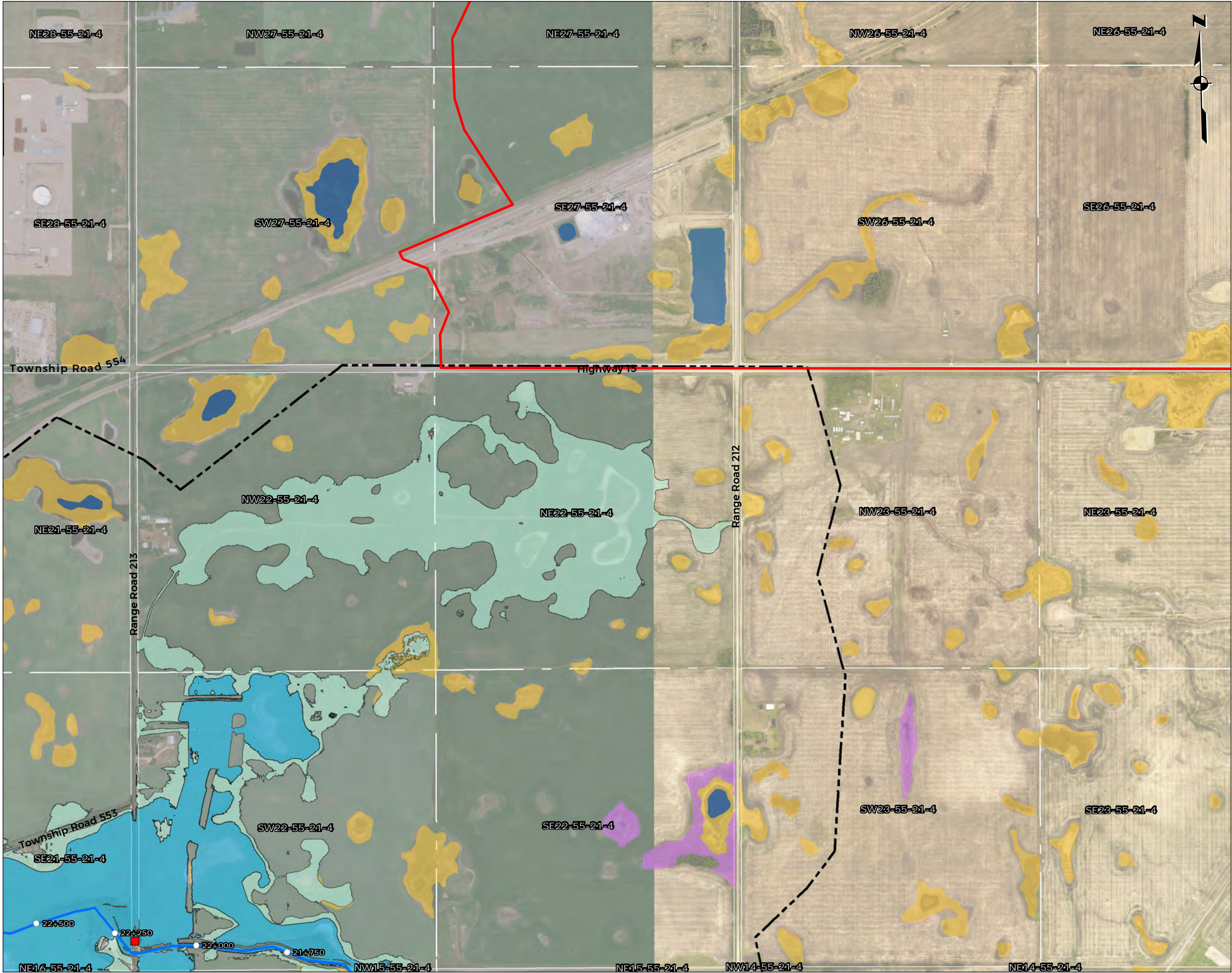
**Astotin Creek  
Alberta**



Report By: AH WSP Job #: 211-03754-00  
Drawn by: JH Date: August 9, 2021  
Reviewed By: AH Office: Edmonton

Notes: Data provided by Altalis; Natural Resource Canada; ESRI





**Legend**

- Station Marker
- Structures
- ~ Astotin Creek
- ▭ Astotin Watershed
- ▭ Hydraulic Model Boundaries
- ~ Floodway
- ~ Flood Fringe
- ~ Marsh
- ~ Swamp
- ~ Open Water

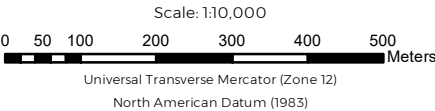
**Notes:**

- 1) The flood maps were created using a two-dimensional hydrodynamic HEC-RAS model and a Digital Elevation Model (DEM) of the Astotin Creek Watershed
- 2) The DEM was created by combining the 2018 LiDAR data collected by Airborne Imaging with the bathymetric data collected by WSP in 2021.
- 3) The HEC-RAS model was calibrated for low-flow conditions but no calibration data for high flood events were available, limiting the model's accuracy at high flows.
- 4) The flood maps do not consider blockage of bridges and culverts that may develop during large flood events.
- 5) The flood maps only consider flooding due to Astotin Creek flows and do not include local impoundments due to flooding issues.

**Astotin Creek Resiliency Study  
Drainage Master Plan**

**Appendix H: 100-Year Flood Hazard Map**

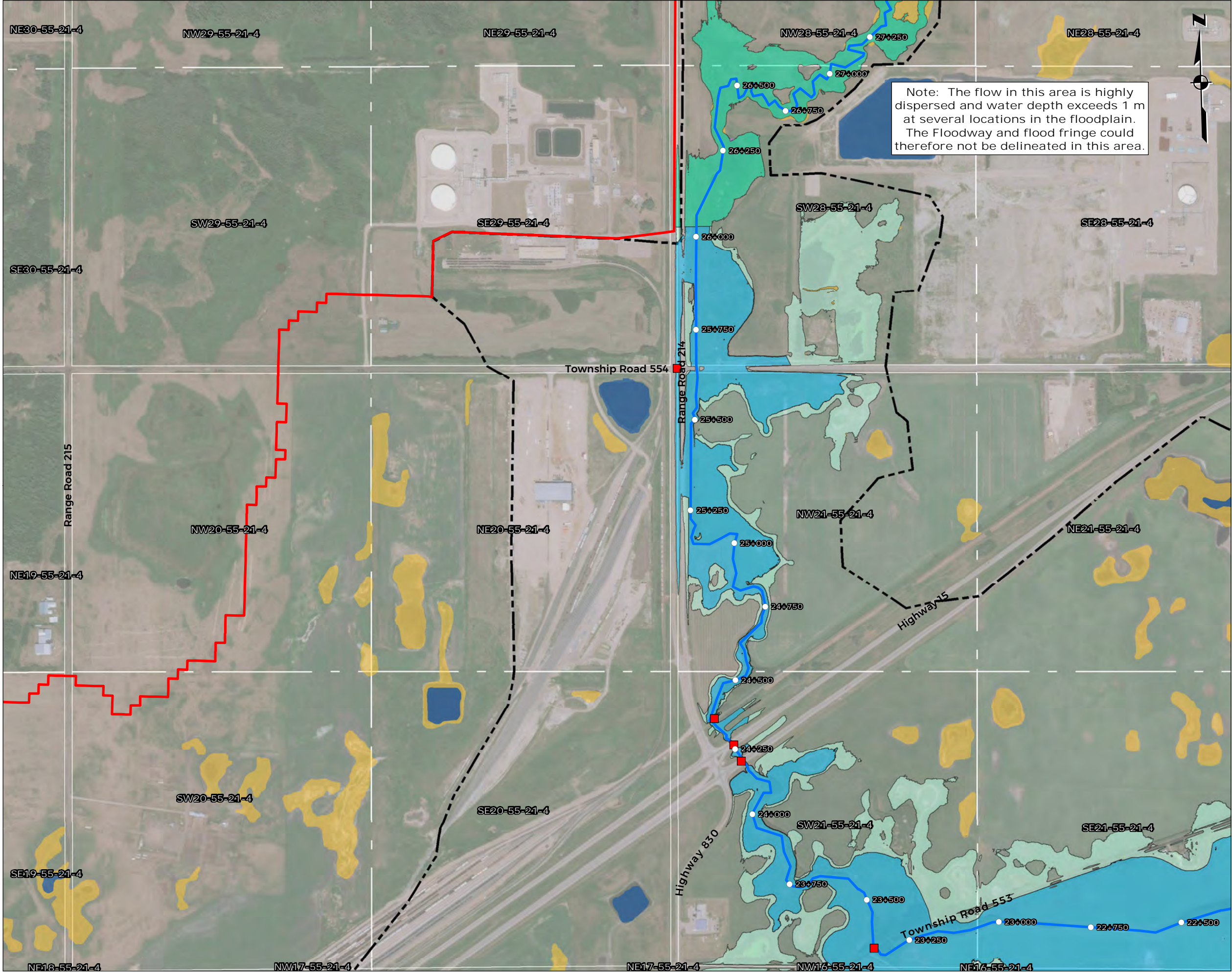
**Astotin Creek  
Alberta**



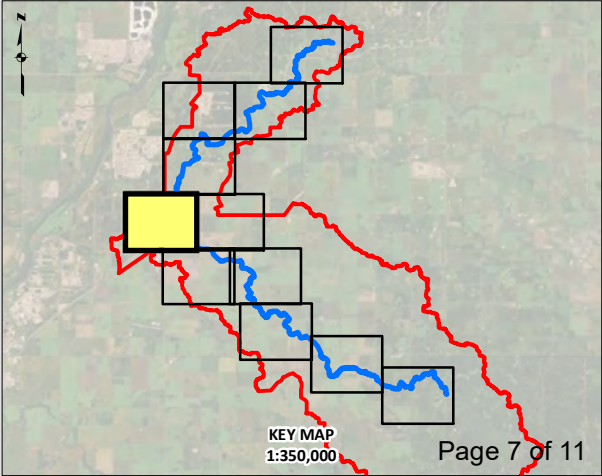
Report By: AH WSP Job #: 211-03754-00  
Drawn by: JH Date: August 9, 2021  
Reviewed By: AH Office: Edmonton

Notes: Data provided by Altalis; Natural Resource Canada; ESRI





Note: The flow in this area is highly dispersed and water depth exceeds 1 m at several locations in the floodplain. The Floodway and flood fringe could therefore not be delineated in this area.



Legend

- Station Marker
- Structures
- ~ Astotin Creek
- ▭ Astotin Watershed
- - - Hydraulic Model Boundaries
- Light Blue Floodway
- Light Green Flood Fringe
- Dark Green 100 Year Flood Inundation
- Yellow Marsh
- Purple Swamp
- Blue Open Water

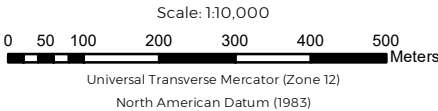
Notes:

- 1) The flood maps were created using a two-dimensional hydrodynamic HEC-RAS model and a Digital Elevation Model (DEM) of the Astotin Creek Watershed
- 2) The DEM was created by combining the 2018 LiDAR data collected by Airborne Imaging with the bathymetric data collected by WSP in 2021.
- 3) The HEC-RAS model was calibrated for low-flow conditions but no calibration data for high flood events were available, limiting the model's accuracy at high flows.
- 4) The flood maps do not consider blockage of bridges and culverts that may develop during large flood events.
- 5) The flood maps only consider flooding due to Astotin Creek flows and do not include local impoundments due to flooding issues.

Astotin Creek Resiliency Study  
Drainage Master Plan

Appendix H: 100-Year Flood Hazard Map

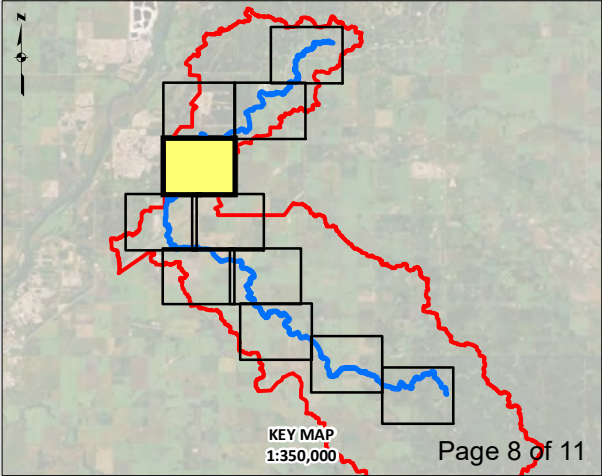
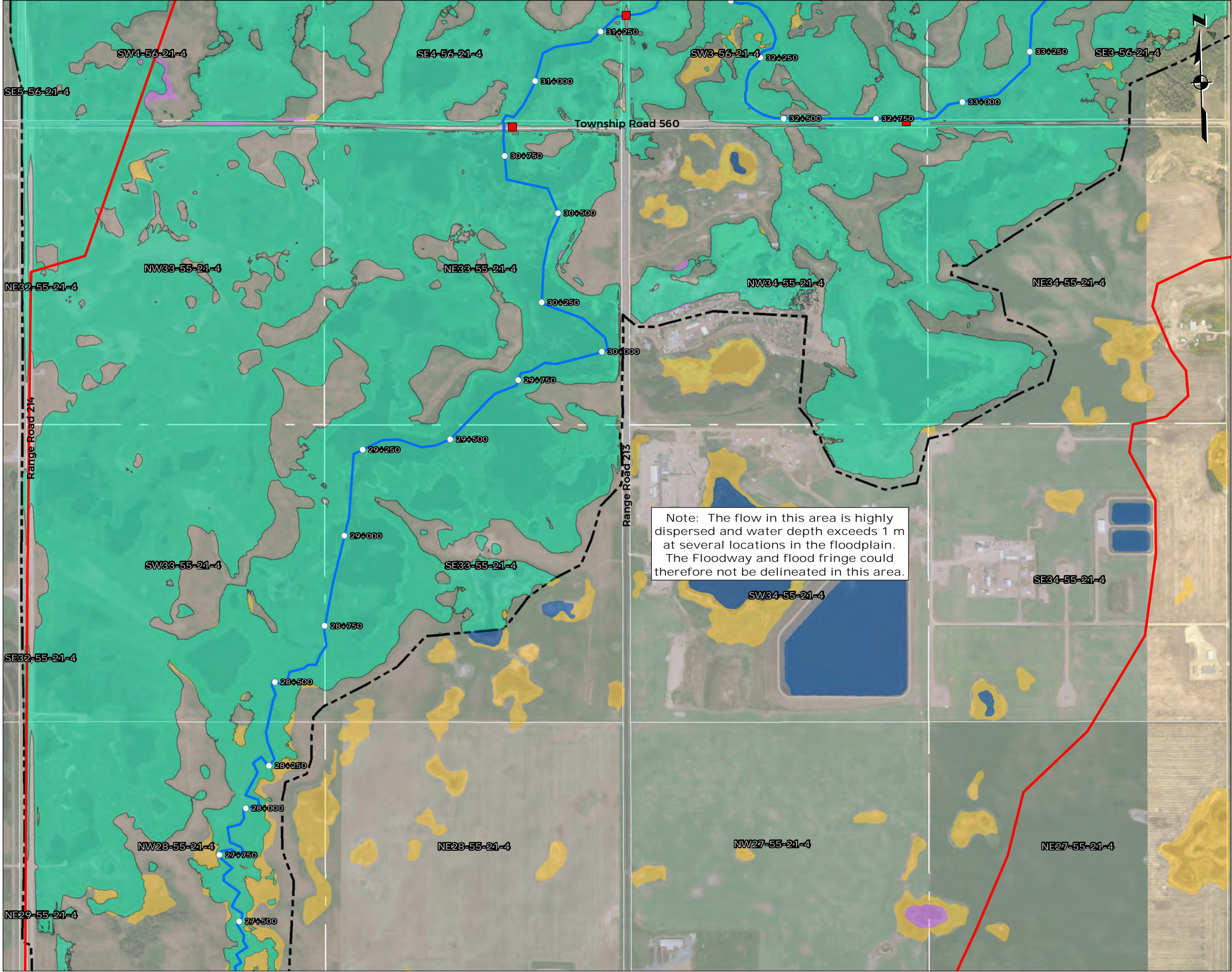
Astotin Creek  
Alberta



Report By: AH WSP Job #: 211-03754-00  
Drawn by: JH Date: August 9, 2021  
Reviewed by: AH Office: Edmonton

Notes: Data provided by Altalis; Natural Resource Canada; ESRI





**Legend**

- Station Marker
- Structures
- ~ Astotin Creek
- ▭ Astotin Watershed
- - - Hydraulic Model Boundaries
- 100 Year Flood Inundation
- Marsh
- Swamp
- Open Water

**Notes:**

- 1) The flood maps were created using a two-dimensional hydrodynamic HEC-RAS model and a Digital Elevation Model (DEM) of the Astotin Creek Watershed
- 2) The DEM was created by combining the 2018 LiDAR data collected by Airborne Imaging with the bathymetric data collected by WSP in 2021.
- 3) The HEC-RAS model was calibrated for low-flow conditions but no calibration data for high flood events were available, limiting the model's accuracy at high flows.
- 4) The flood maps do not consider blockage of bridges and culverts that may develop during large flood events.
- 5) The flood maps only consider flooding due to Astotin Creek flows and do not include local impoundments due to flooding issues.

**Astotin Creek Resiliency Study  
Drainage Master Plan**

**Appendix H: 100-Year Flood Hazard Map**

**Astotin Creek  
Alberta**

Scale: 1:10,000

0 50 100 200 300 400 500 Meters

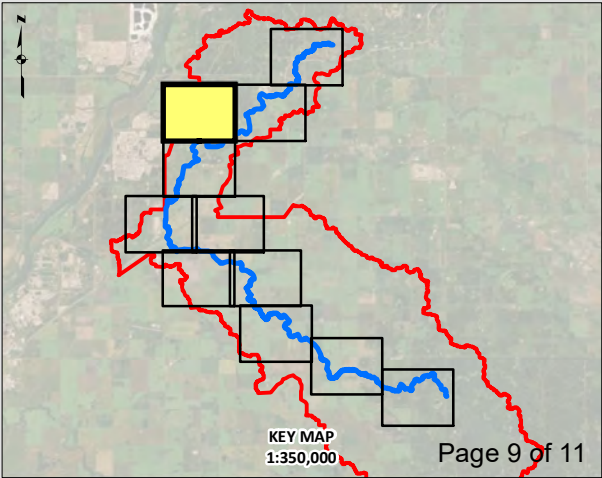
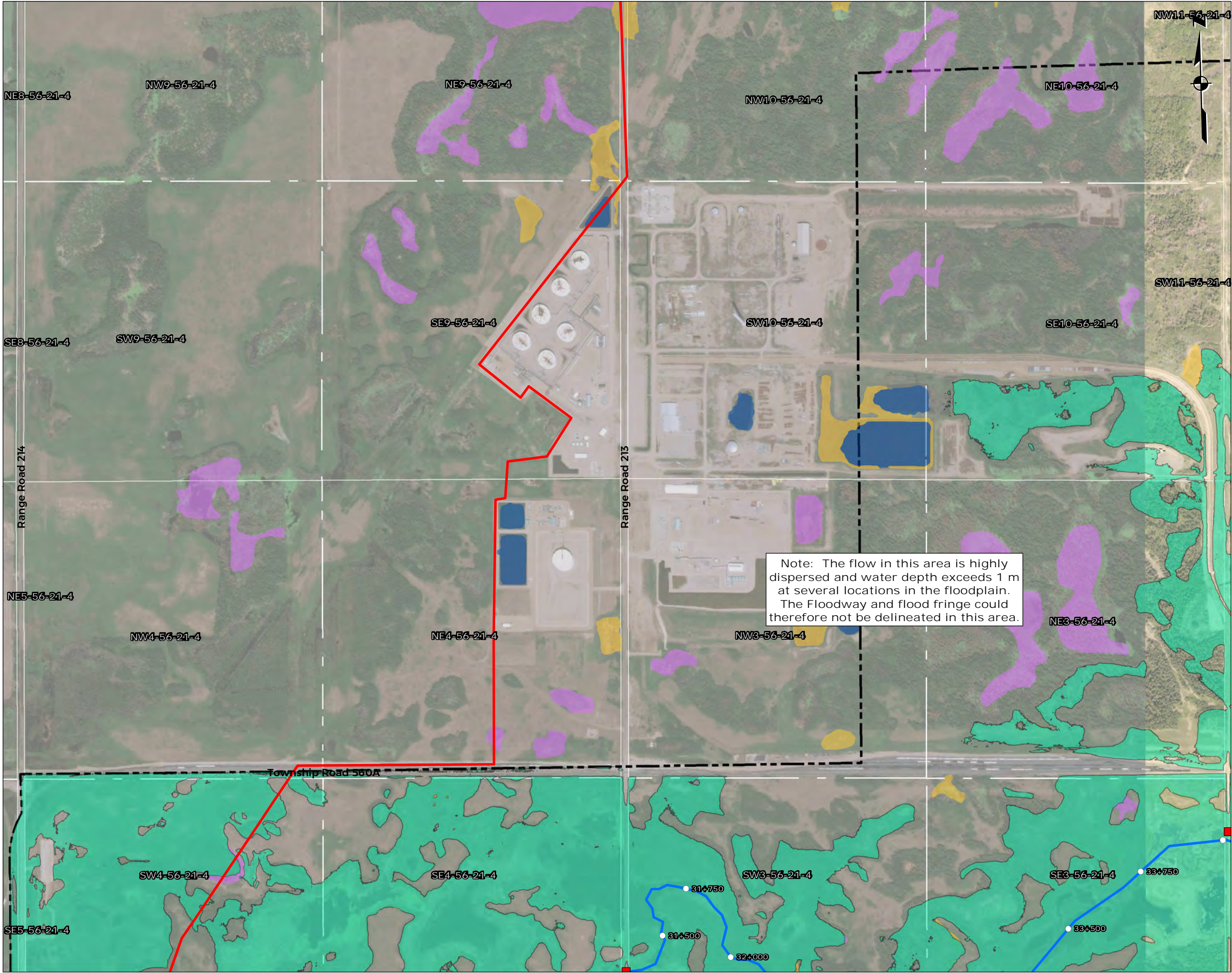
Universal Transverse Mercator (Zone 12)  
North American Datum (1983)

**wsp**

Report By: AH WSP Job #: 211-03754-00  
Drawn by: JH Date: August 9, 2021  
Reviewed By: AH Office: Edmonton

Notes: Data provided by Altalis; Natural Resource Canada; ESRI





Legend

- Station Marker
- Structures
- Astotin Creek
- Astotin Watershed
- Hydraulic Model Boundaries
- 100 Year Flood Inundation
- Marsh
- Swamp
- Open Water

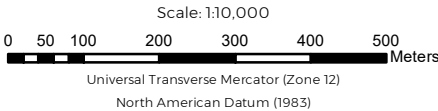
Notes:

- 1) The flood maps were created using a two-dimensional hydrodynamic HEC-RAS model and a Digital Elevation Model (DEM) of the Astotin Creek Watershed
- 2) The DEM was created by combining the 2018 LiDAR data collected by Airborne Imaging with the bathymetric data collected by WSP in 2021.
- 3) The HEC-RAS model was calibrated for low-flow conditions but no calibration data for high flood events were available, limiting the model's accuracy at high flows.
- 4) The flood maps do not consider blockage of bridges and culverts that may develop during large flood events.
- 5) The flood maps only consider flooding due to Astotin Creek flows and do not include local impoundments due to flooding issues.

Astotin Creek Resiliency Study  
Drainage Master Plan

Appendix H: 100-Year Flood Hazard Map

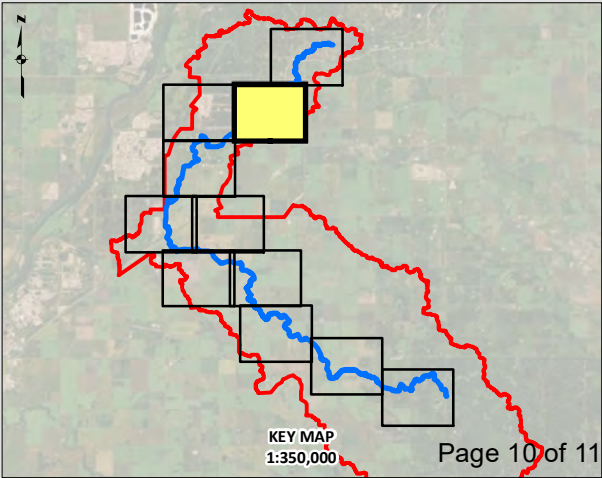
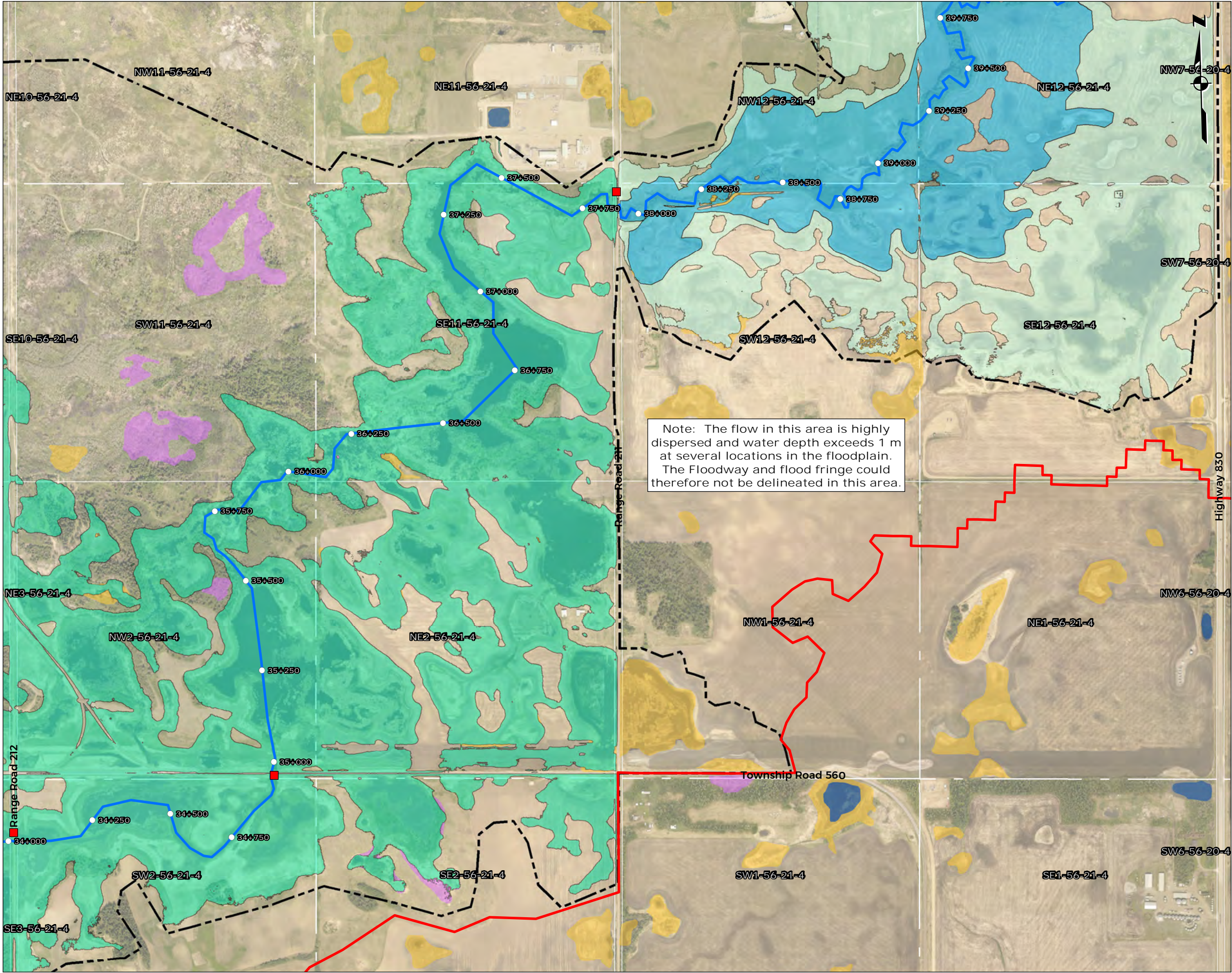
Astotin Creek  
Alberta



Report By: AH WSP Job #: 211-03754-00  
Drawn by: JH Date: August 9, 2021  
Reviewed By: AH Office: Edmonton

Notes: Data provided by Altalis; Natural Resource Canada; ESRI





**Legend**

- Station Marker
- Structures
- ~ Astotin Creek
- ▭ Astotin Watershed
- - - Hydraulic Model Boundaries
- Light Blue Floodway
- Light Green Flood Fringe
- Dark Green 100 Year Flood Inundation
- Yellow Marsh
- Purple Swamp
- Blue Open Water

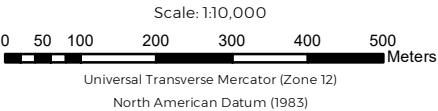
**Notes:**

- 1) The flood maps were created using a two-dimensional hydrodynamic HEC-RAS model and a Digital Elevation Model (DEM) of the Astotin Creek Watershed
- 2) The DEM was created by combining the 2018 LiDAR data collected by Airborne Imaging with the bathymetric data collected by WSP in 2021.
- 3) The HEC-RAS model was calibrated for low-flow conditions but no calibration data for high flood events were available, limiting the model's accuracy at high flows.
- 4) The flood maps do not consider blockage of bridges and culverts that may develop during large flood events.
- 5) The flood maps only consider flooding due to Astotin Creek flows and do not include local impoundments due to flooding issues.

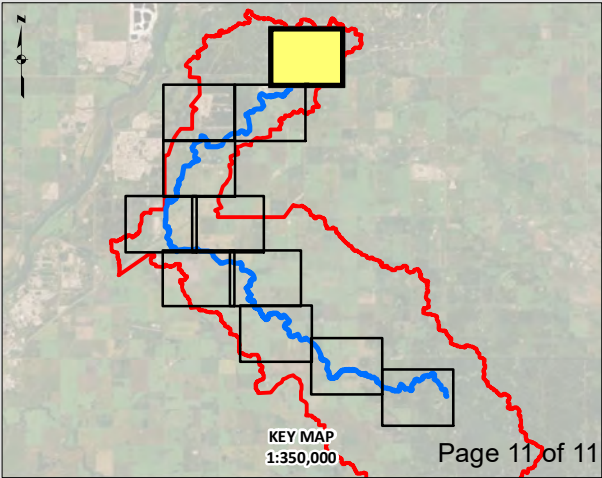
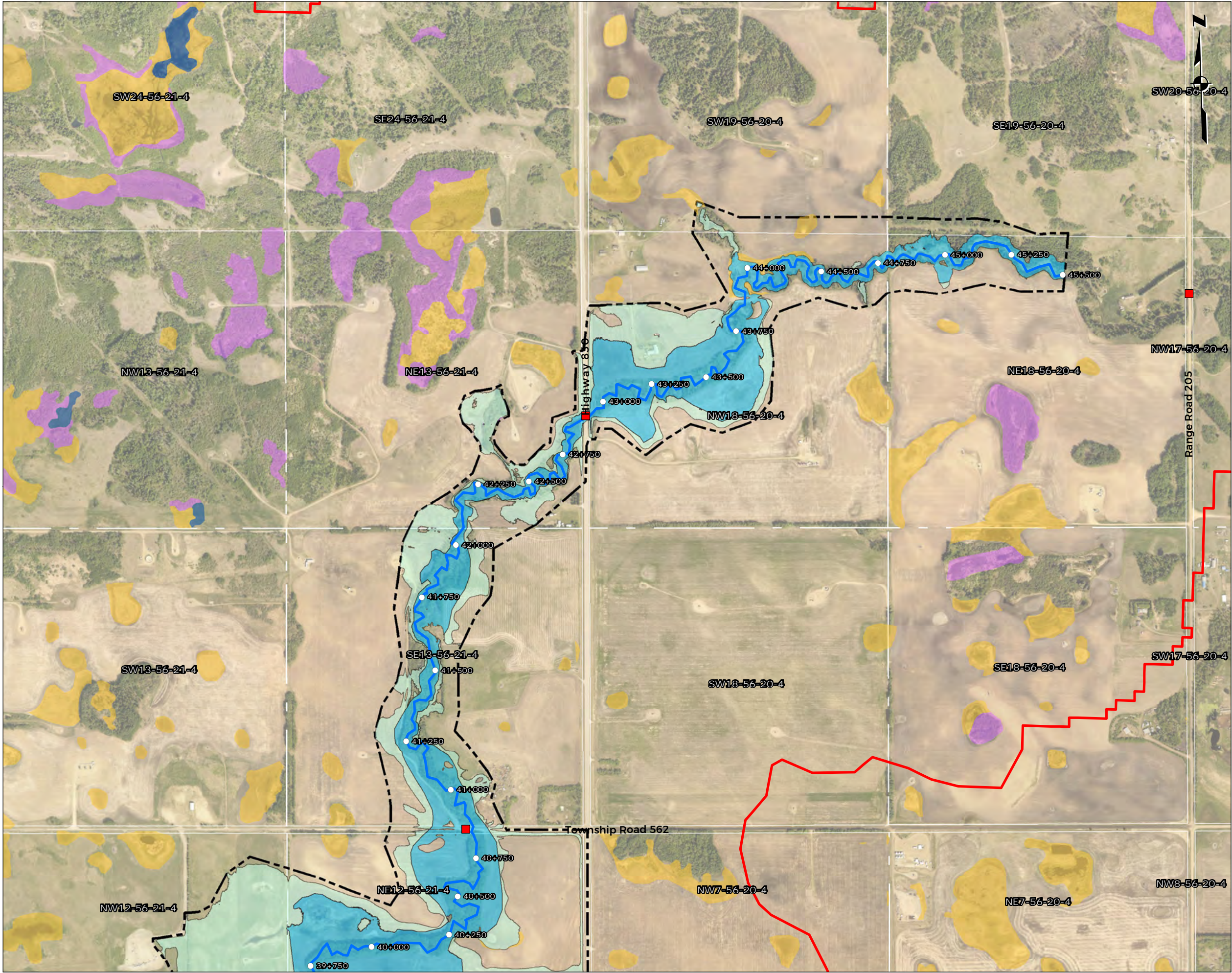
**Astotin Creek Resiliency Study  
Drainage Master Plan**

**Appendix H: 100-Year Flood Hazard Map**

**Astotin Creek  
Alberta**







**Legend**

- Station Marker
- Structures
- Astotin Creek
- ▭ Astotin Watershed
- - - Hydraulic Model Boundaries
- Floodway
- Flood Fringe
- Marsh
- Swamp
- Open Water

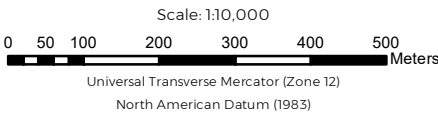
**Notes:**

- 1) The flood maps were created using a two-dimensional hydrodynamic HEC-RAS model and a Digital Elevation Model (DEM) of the Astotin Creek Watershed
- 2) The DEM was created by combining the 2018 LiDAR data collected by Airborne Imaging with the bathymetric data collected by WSP in 2021.
- 3) The HEC-RAS model was calibrated for low-flow conditions but no calibration data for high flood events were available, limiting the model's accuracy at high flows.
- 4) The flood maps do not consider blockage of bridges and culverts that may develop during large flood events.
- 5) The flood maps only consider flooding due to Astotin Creek flows and do not include local impoundments due to flooding issues.

**Astotin Creek Resiliency Study  
Drainage Master Plan**

**Appendix H: 100-Year Flood Hazard Map**

**Astotin Creek  
Alberta**



Report By: AH WSP Job #: 211-03754-00  
Drawn by: JH Date: August 9, 2021  
Reviewed By: AH Office: Edmonton

Notes: Data provided by Altalis; Natural Resource Canada; ESRI