

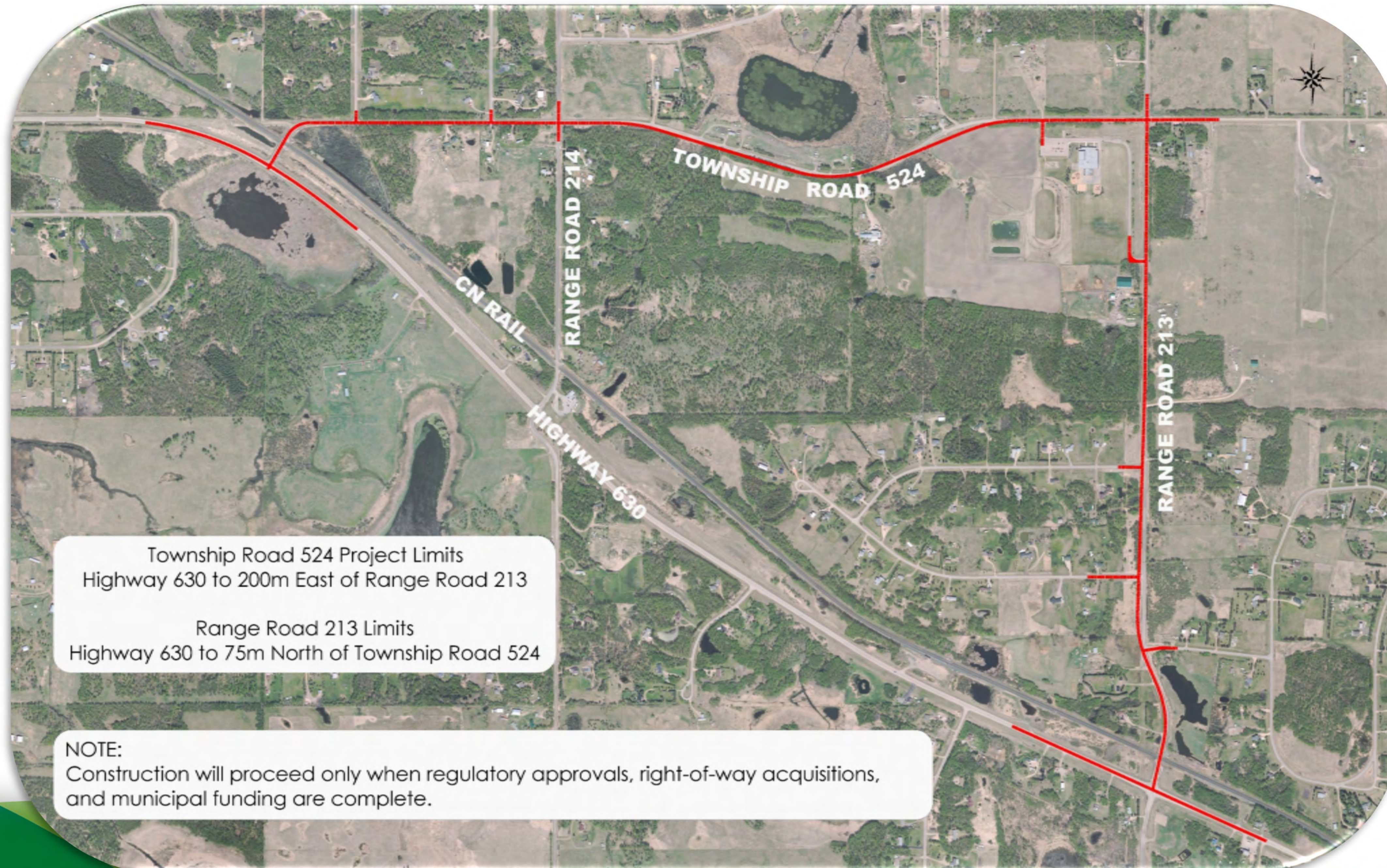
# Welcome

## TOWNSHIP ROAD 524 & RANGE ROAD 213 UPGRADING

June 13, 2018



# PROJECT LIMITS



# OPEN HOUSE

- Inform residents and the public about the project
- Present timelines for implementation
- Identify road right-of-way and design constraints
- Gather comments from the public

# PROJECT PURPOSE

**To ensure that the corridor functions safely and efficiently in the future by:**

- **Meeting** current design standards and safety guidelines
- **Providing** a consistent road width
- **Improving** road network for area residents

# PUBLIC COMMUNICATION

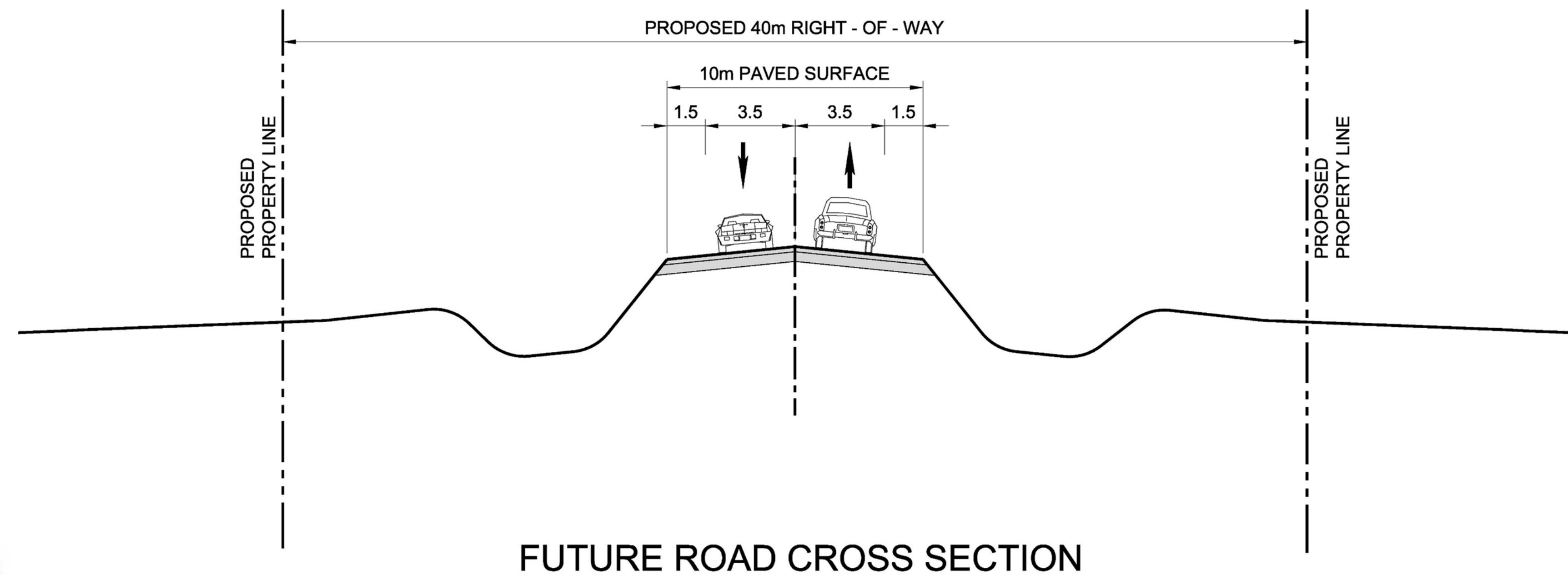
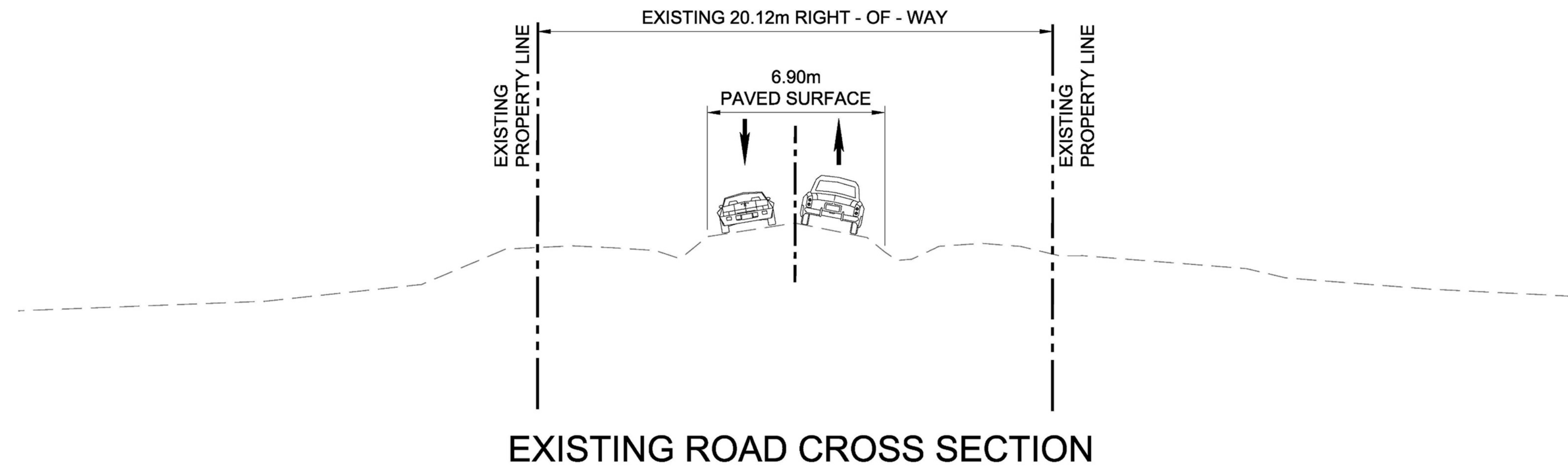
1. Project information open house
  - June 13, 2018
2. One-on-one landowner meeting
  - To begin in June 2018
3. Ongoing communication
  - Website updates ([www.strathcona.ca/TWP524](http://www.strathcona.ca/TWP524))
  - Spring / fall newsletters to stakeholders
4. Ongoing access to project managers

# DESIGN CRITERIA

## **Improvements for Township Road 524 / Range Road 213 include:**

- Paved widened travel surface
- Improved drainage
- Better sightlines
- Improved safety at intersections
- Lighting at highway intersections

# ROAD CROSS SECTIONS



# CORRIDOR REQUIREMENTS

## Improvements for Township Road 524 / Range Road 213 will require:

- Acquiring road right-of-way
- Relocating utilities
- Modifying accesses
- Removing trees/bushes
- Large quantities of fill
- Environmental coordination

# HIGHWAY INTERSECTION IMPROVEMENT



Proposed Improvements for Highway Intersections at Range Road 213 and Township Road 524

## Features

- Lighting
- Designated left turn bay
- Acceleration and deceleration tapers

## Benefits

- A safer intersection

# TOWNSHIP ROAD 524 & RANGE ROAD 213 INTERSECTION IMPROVEMENT



Proposed Improvements on Township Road 524 at Range Road 213 and Range Road 214

## Features

- Acceleration and deceleration tapers on Township Road 524
- Improved turn radiuses for larger vehicles (buses)

## Benefits

- Improved traffic flow
- Intersection type consistent with existing traffic volumes

# SUBDIVISION ACCESS IMPROVEMENT



Proposed Improvements for subdivision entrances to Barronwood, Meadow Land Estates and Farrel Properties

## Features

- Acceleration and Deceleration tapers

## Benefits

- Better traffic flow
- Meets County Design Standards

# ENVIRONMENTAL CONSIDERATIONS

**The following will impact the road design and construction:**



- **Stormwater management to waterbodies**
- **Silt and Erosion controls**
- **Identified wetlands**
- **Bird nesting habitat**

# MOVING FORWARD

- **OPEN HOUSE: June 13, 2018**
- **Landowner Contact & Follow-up**
- **Complete Design Phase - 2018**
- **Construction: 5+ years pending various project funding and approvals**

# THANK YOU

**PLEASE Complete A Comment Card**

**Or**

**Provide Your Comments Online**

**[www.Strathcona.ca/Twp524](http://www.Strathcona.ca/Twp524)**