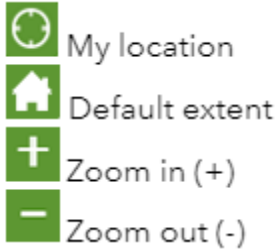


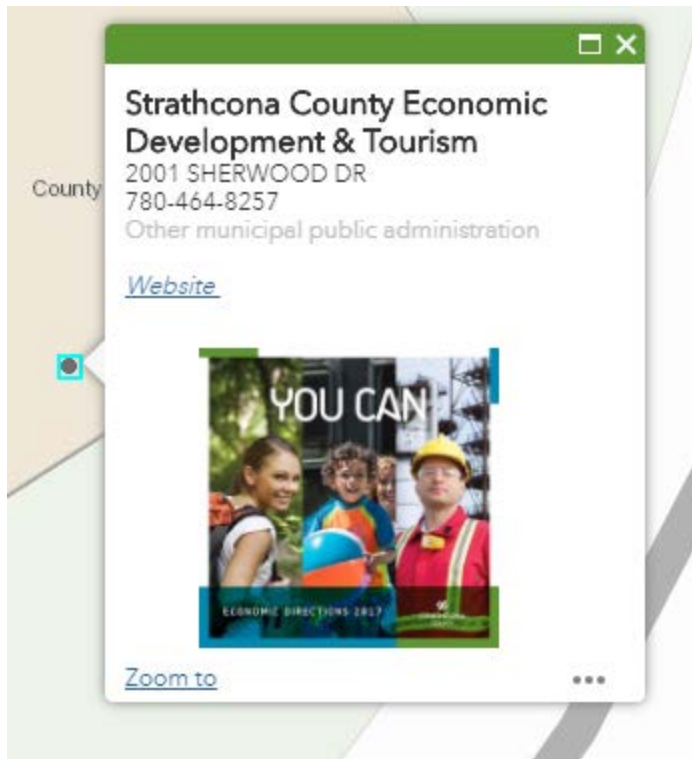
Business Directory Tip Sheet

View business data

1. Using the map tools zoom in and out to different areas



2. Click on a point to view information about a business



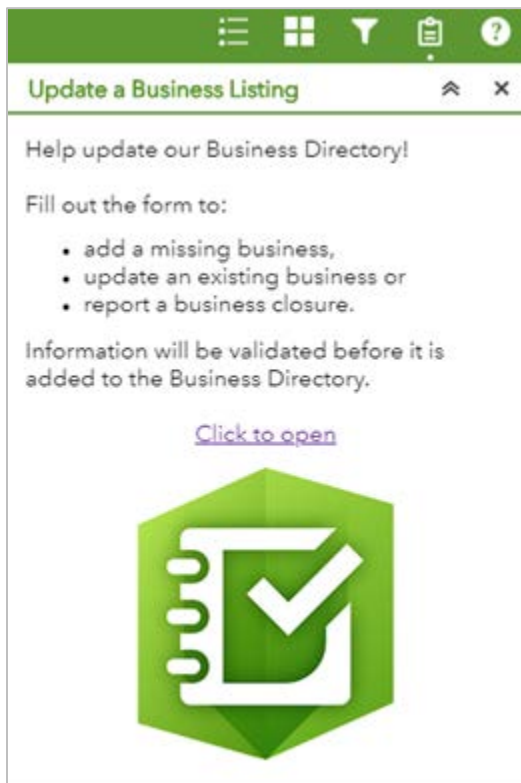
3. Use the search tool to look for a particular business name or address



Add/change business information

1. Select 'Update a Business Listing' 

2. Then 'Click to open'



3. Proceed by filling out the Business Directory Survey

The screenshot displays a web form titled "Strathcona County Business Directory". The form includes the following elements:

Strathcona County Business Directory

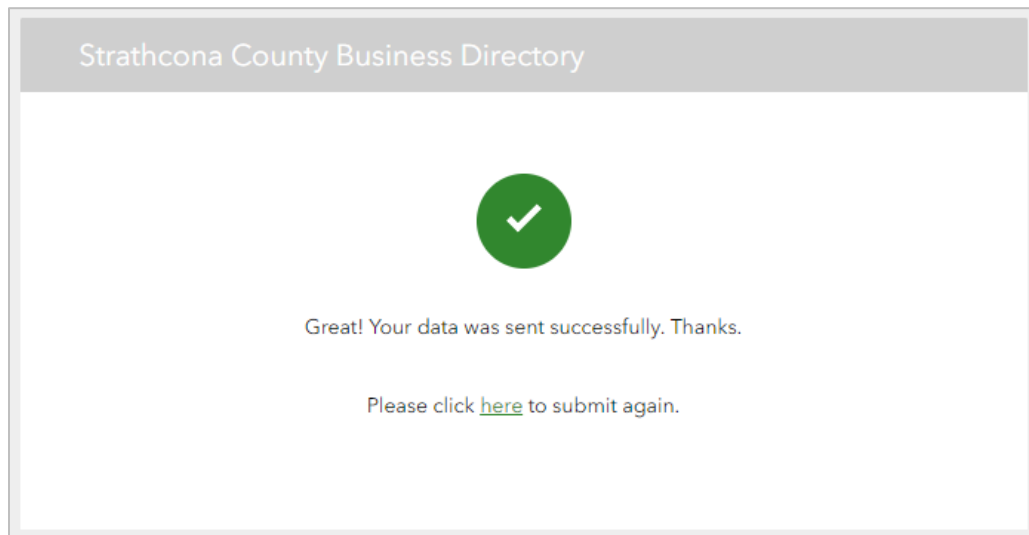
Help keep our Business Directory current!
Fill out the survey below to add a missing business, update an existing business or report a business closure. Information will be validated before it is added to the Business Directory.

Type of Change

- Add a business
- Add a home based business
- Update a business
- Report a closed business

Submit

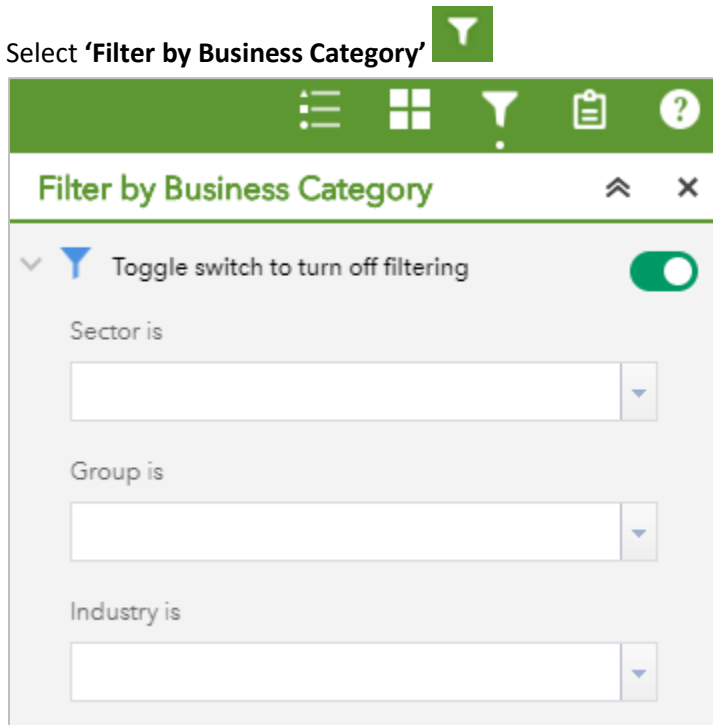
4. Select **'here'** if you want to submit more changes.



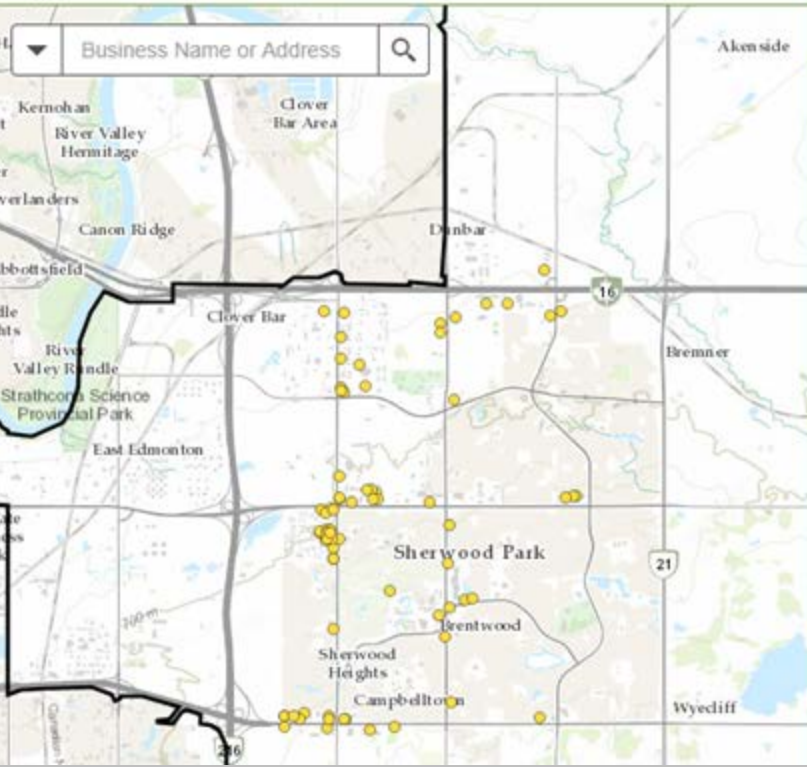
Information will be validated before changes are added to the Business Directory.

Search by industry

1. Select **'Filter by Business Category'**



2. Use the dropdown to choose the appropriate category. Businesses are categorized using the [North America Industry Classification System \(NAICS\)](#). Sector is a more general classification and Industry is more specific.



Filter by Business Category

Toggle switch to turn off filtering

Sector is
Accommodation and food services

Group is
Full-serv. rest. & limited-serv. eating plac

Industry is
Full-service restaurants

3. To stop filtering the records toggle the switch back to grey.

STRATHCONA COUNTY Business Directory

Business Name or Address

Filter by Business Category

Toggle switch to turn off filtering

Sector is
Accommodation and food services

Group is
Full-serv. rest. & limited-serv. eating plac

Industry is
Full-service restaurants

Fort Saskatchewan

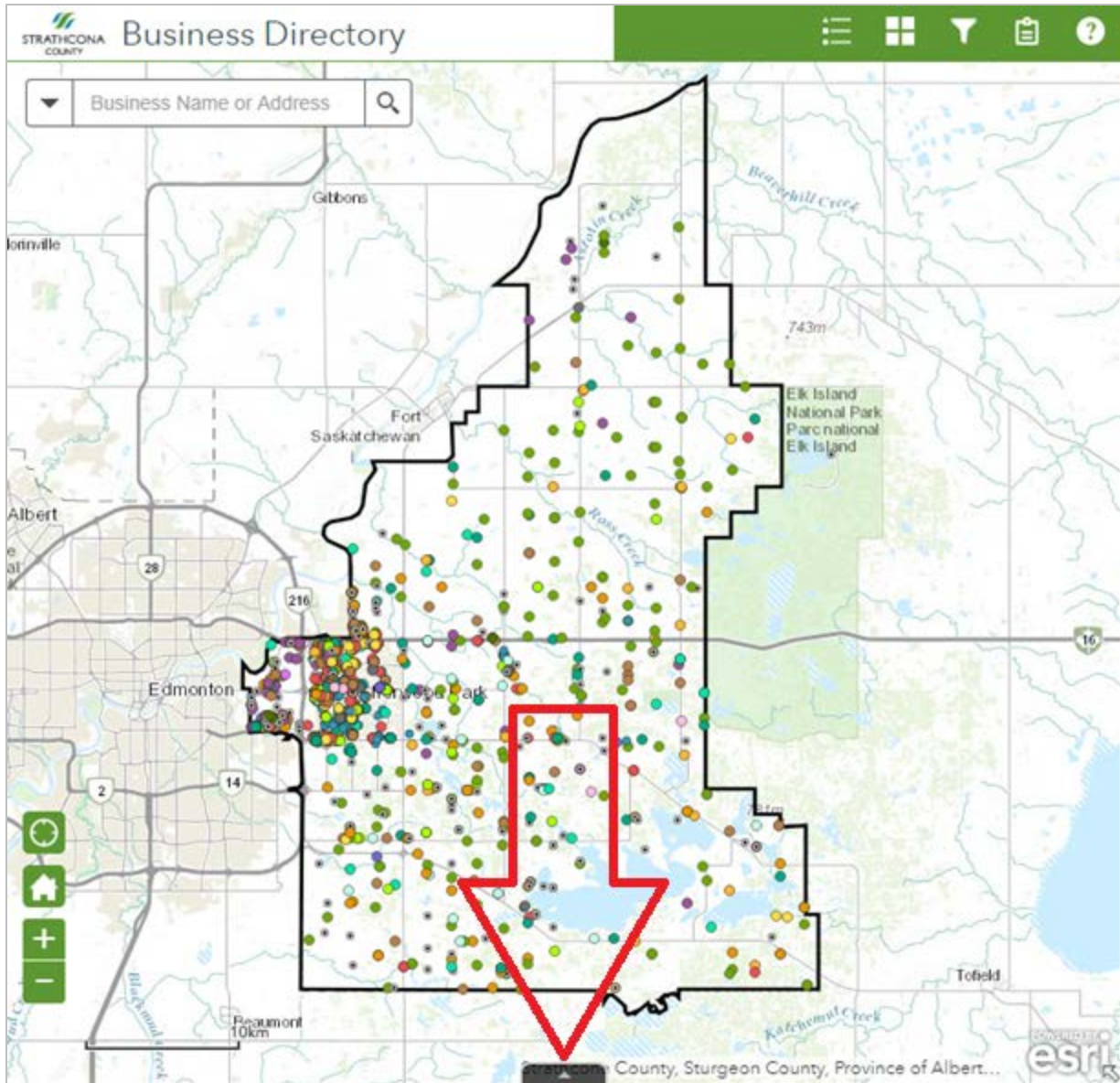
Beaumont

10km

esri

Export data

1. Open Attribute table 



- View table attributes. *Only records that are currently visible in your map are shown in the table by default (Filter by Map Extent).*

20m

University of Alberta, City of Edmonton, Strathcona County, Bureau of Land M... POWERED BY esri

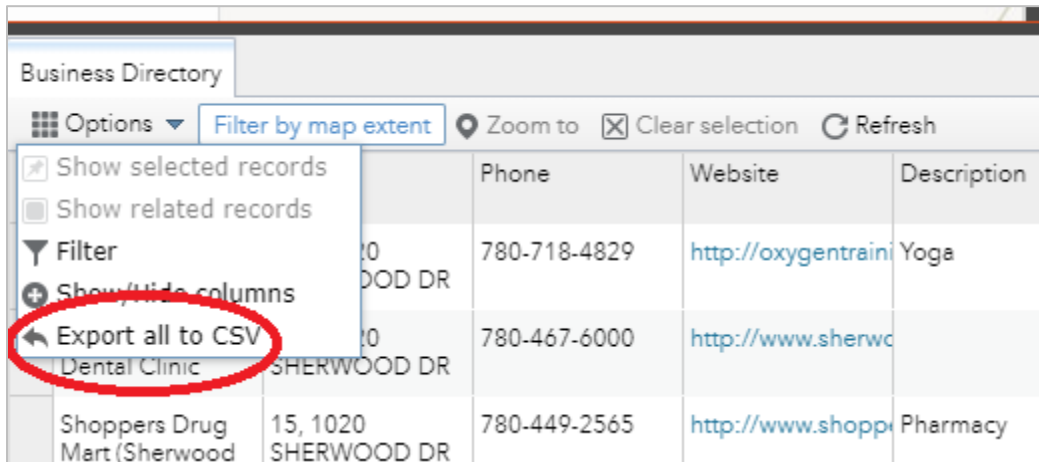
Business Directory

Options Filter by map extent Zoom to Clear selection Refresh

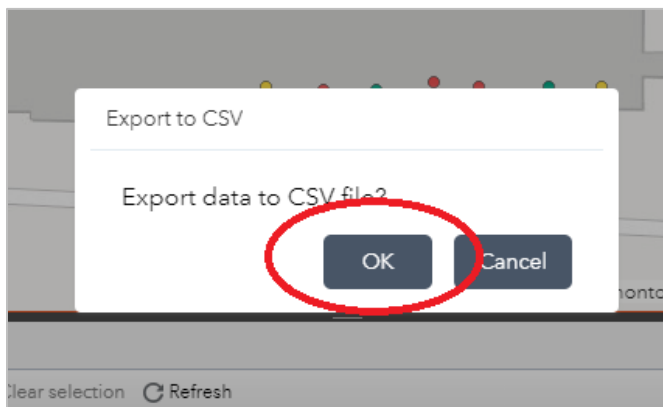
Name	Address	Phone	Website	Description	Sector Description	Group Description	Industry Description	NAICS Code	Operating Since
Oxygen Yoga and Fitness	130, 1020 SHERWOOD DR	780-718-4829	http://oxygentrain	Yoga	Educational services	Other schools & instruction	All other schools & instruction	611690	2016
Sherwood Centre Dental Clinic	122, 1020 SHERWOOD DR	780-467-6000	http://www.sherwo		Health care and social assistance	Offices of dentists	Offices of dentists	621210	
Shoppers Drug Mart (Sherwood Center)	15, 1020 SHERWOOD DR	780-449-2565	http://www.shopp	Pharmacy	Retail trade 44	Health & personal care stores	Pharmacies & drug stores	446110	
The Chopped Leaf	80, 1020 SHERWOOD DR	800-555-5726	https://www.chopped-centre/	Restaurant	Accommodation and food services	Full-serv. rest. & limited-serv.	Limited-service eating places	722512	

14 features 0 selected

3. Select 'Options' then 'Export all to CSV'



4. Choose 'OK'. Only records that are currently visible in the table will be exported.



5. A CSV file can be opened in software such as Microsoft Excel.

For more information contact

Strathcona County

Economic Development and Tourism

Phone: 780-464-8095

E-mail: scedt@strathcona.ca

