

THE **BEST** EXPERIENCES  
IN SHERWOOD PARK &  
STRATHCONA COUNTY

FOOD IS **BETTER**  
**HERE**

**FUN & EASY** TRIP  
**PLANS**  
ALREADY MADE

LET **NATURE** BE YOUR  
**GUIDE**

**GO**  
STRATHCO

**DOWNLOAD  
THIS GUIDE!**



[strathcona.ca/goguide](http://strathcona.ca/goguide)

  
STRATHCONA  
COUNTY





Strathcona County is located on Treaty Six Territory and the homeland of the Métis Nation of Alberta, Region Two and Four. Strathcona County honours the First Peoples of this land. We recognize that we stand upon land that carries the footsteps of Cree, Métis, and Blackfoot amongst many other Nations, who have been here for thousands of years. Therefore, Strathcona County has an inherent responsibility to foster healthier relationships with First Peoples and further the Calls to Action as outlined by the Truth and Reconciliation Commission.



## 07 [WELCOME](#)

Start your road trip adventure in Strathcona County.

## 08 [GETTING HERE](#)

If you are travelling by plane, train, bus, car or bike, you can't miss us.

## 09 [VISITOR INFORMATION](#)

Be sure to stop by – we are happy to share our local knowledge!

## 10 [ACCOMMODATIONS](#)

There are several options for to choose, unpack and unwind at.

## 13 [INTERESTING FACTS](#)

Learn some fun facts about Strathcona County.

## 14 [THE LOCAL FOOD EXPERIENCE](#)

These are just a few of the places you must try!

## ITINERARIES

Easy and convenient travel plans already made for you – see you soon!

### 30 [Spring/Summer](#)

### 58 [Full/Winter](#)

## 32 [ON THE LOOKOUT FOR LOCAL](#)

Supporting these local business will bring smiles to their faces!

## 34 [STRATHCONA COUNTY ORIGINS](#)

Learn more on how Strathcona County came to be.

## FEATURES

### 25 [Restaurants](#)

### 29 [Coffee shops, breweries & distilleries](#)

### 39 [Desserts](#)

### 40 [Boutique shopping](#)

### 42 [Fitness](#)

### 43 [Spas](#)

### 45 [Golf](#)

### 46 [Active lifestyles](#)

### 49 [Trails](#)

### 50 [Camping](#)

### 53 [Farm experiences](#)

### 54 [Farmers' markets](#)

### 55 [Greenhouses](#)

### 57 [Arts & culture](#)

### 61 [Event calendar](#)

This publication is produced by Strathcona County Economic Development and Tourism, listing independent businesses and is not intended to be comprehensive. Attractions listed on an informational basis only. Strathcona County does not endorse or guarantee the services offered by individual businesses. Visit [strathcona.ca/businessdirectory](http://strathcona.ca/businessdirectory) for additional business listings.



**ON THE COVER:** This happy couple is enjoying a locally sourced picnic at BarOA Farms, a national award winning business that delivers an authentic experience here, in Strathcona County. Learn more about BarOA on page 53.



# WHAT'S INSIDE

# LET'S SHARE!



#GoStrathco





# WE WANT YOU TO GO STRATHCO!

It starts with a visit. Going to a destination to experience something new and to discover a connection with the world. You might be a curious adventurer, looking to learn about a place's incredible natural beauty or the authentic culture of a region. You might be a hotspot hunter who is looking to taste a community through food and meals, or you might be looking for a deeper connection with those who work and grow hand-in-hand with nature as they produce food and livelihoods. No matter what you're looking for, and no matter what you're looking to feel, it starts with a visit. It starts with going. Go Strathco.

It is our pleasure to welcome you to the community of Strathcona County!

Located in Alberta, Canada, a few hours east of the Rocky Mountains, and only a 10-minute drive from the capital city Edmonton – Sherwood Park and Strathcona County have endless offerings for those looking to get back to nature, to enjoy delicious food, and to be immersed in local culture.

Strathcona County is the perfect blend of a laid back county lifestyle with all the exciting urban amenities and activities. With picturesque farmland below big, beautiful blue skies, this is the place where you can find what you've been looking for.

Beyond the adventures in nature, you will find the residents' kindness, hospitality and smiles will keep you coming back.

This is an exciting time for us and for you. This is the beginning of a new look for visitors in Sherwood Park and Strathcona County.

#GoStrathco.





# GETTING HERE



When you get here, stop by the visitor information centre at the Sherwood Park & District Chamber of Commerce, or reach out to the tourism department at Strathcona County. We can hardly wait to welcome you!

## Strathcona County

### Economic Development and Tourism

2001 Sherwood Drive (County Hall)

T: 780-464-8095

W: [strathcona.ca/edt](http://strathcona.ca/edt)

### Sherwood Park & District Chamber of Commerce

100 Ordze Avenue

T: 780-464-0801

TF: 1-866-464-0801

W: [sherwoodparkchamber.com](http://sherwoodparkchamber.com)



# VISITOR INFORMATION



# ACCOMMODATIONS

The hotels located in Sherwood Park, Strathcona County have a variety for you to choose from. If you are on a business trip or vacationing with your family, there are options and amenities to suit all of your needs and budget.



**Best Western Plus Sherwood Park Inn and Suites**

300 Lakeland Drive  
T: 780-416-7800 or 1-800-780-7234  
W: [bestwesternsherwoodpark.com](http://bestwesternsherwoodpark.com)

**Clarion Hotel and Conference Center**

2100 Premier Way  
T: 780-464-4900  
W: [choicehotels.com](http://choicehotels.com)

**Days Inn and Suites by Wyndham Sherwood Park**

201 Palisades Way  
T: 780-570-8080 or 1-800-329-7466  
W: [daysinnsherwoodpark.com](http://daysinnsherwoodpark.com)

**Four Points by Sheraton Sherwood Park**

1005 Provincial Avenue  
T: 780-705-3552  
W: [marriott.com](http://marriott.com)

**Hampton Inn by Hilton Edmonton/Sherwood Park**

950 Emerald Drive  
T: 780-449-1609  
W: [hilton.com](http://hilton.com)

**Holiday Inn Express & Suites Sherwood Park-Edmonton Area**

11 Portage Lane  
T: 780-417-338  
W: [ihg.com](http://ihg.com)

**Ramada by Wyndham Sherwood Park**

30 Broadway Boulevard  
T: 780-467-6727 or 1-800-272-6232  
W: [wyndhamhotels.com](http://wyndhamhotels.com)

**Sandman Signature Sherwood Park Hotel**







901 Pembina Road  
T: 780-467-7263  
W: [sandmanhotels.com](http://sandmanhotels.com)

**Super 8 by Wyndham Sherwood Park**

26 Strathmoor Drive  
T: 780-464-1000 and 1-877-218-8811  
W: [super8sherwoodpark.com](http://super8sherwoodpark.com)

**TownePlace Suites by Marriott Edmonton Sherwood Park**

1001 Provincial Avenue  
T: 780-570-0285  
W: [marriott.com](http://marriott.com)

						
Best Western	✓	✓	✓		90	Meeting rooms: 1 Capacity: 35 ppl
Clarion	✓		✓		258	Meeting rooms: 19 Capacity: 600 ppl
Days Inn	✓		✓	✓	115	Meeting rooms: 2 Capacity: 40 ppl
Four Points	✓	✓	✓		120	Meeting rooms: 3 Capacity: 135 ppl
Hampton Inn	✓	✓	✓		121	Meeting rooms: 2 Capacity: 100 ppl
Holiday Inn	✓		✓	✓	90	Meeting rooms: 1 Capacity: 20 ppl
Ramada	✓		✓	✓	63	Meeting rooms: 2 Capacity: 25 ppl
Sandman	✓	✓	✓	✓	229	Meeting rooms: 5 Capacity: 150 ppl
Super 8	✓		✓		120	Meeting rooms: 3 Capacity: 20 ppl
TownePlace	✓		✓	✓	105	Meeting rooms: 1 Capacity: 10 ppl

Hotel amenity and service options subject to change at the discretion of each hotel property at any time. Information based at the time of release (February 2025) and it is recommend that you contact your preferred hotel directly for the latest information.





Strathcona County is a specialized municipality with 9 hamlets – a specialized municipality is a unique type of local government that can be formed without special legislation, allowing for the coexistence of urban and rural communities under a single municipal structure. Currently, 75,575 residents live in the urban areas and 28,253 in the rural community and continues to grow every day!

Strathcona County is home to 2 Dark Sky Preserves; Cooking Lake-Blackfoot Provincial Recreation Area as well as Elk Island National Park.

Strathcona County is a Bird Friendly City. It's a badge of honour that celebrates the contributions municipalities make to save bird lives. There are 150 bird species in the County, making the region a favourite place to visit for bird watchers. The Pileated Woodpecker is the official bird of Strathcona County.

There are 217 kilometers of maintained trails in Sherwood Park and Strathcona County for which you, your family and friends can enjoy year-round.

The Beaver Hills was designated as a biosphere in 2016 by the United Nations Educational, Scientific and Cultural Organization (UNESCO). This is a global recognition of a collective commitment by the communities within the region to celebrate and advance knowledge, culture, nature and economy together.

In 1953, Sherwood Park was originally founded as Campbelltown. But due to the existence of several other communities in Canada with the same name, was changed to Sherwood Park in 1956.

# INTERESTING FACTS

Explore Strathcona County and take advantage of our **FREE** recreation opportunities including:

- Art exhibits from Gallery@501
- Public art
- Outdoor trails
- Beaver Hills Biosphere
- Parks and playgrounds
- Special events



# THE **LOCAL FOOD** EXPERIENCE

By Twyla Campbell

In recent years, the culinary scene has become a major draw for travellers seeking unique and memorable dining experiences. Food tourism is on the rise, with adventurers eager to explore new flavours and culinary traditions.

Alberta is becoming a mecca of bold restaurateurs – some moving to the province from faraway countries, sharing with you their comforts of home, others working their way up in the local food industry, to finally open a place of their own.

Consider it a rebirth. New tastes. Fresh (and unique) ingredients. Updated techniques. It's variety which is attracting us all.

If variety is the spice of life, then the County's cupboard is overflowing. From bakeries to breweries and everything in between, Strathcona County offers a smorgasbord of international food and drink to rival that of neighbouring destinations.

Residents are hungry for culinary adventure and those in the industry are obliging. Duck udon? Absolutely. A 24-variety olive bar? No problem. Seafood, curries, beef

tongue tacos: you've come to the right place. Need something to wet your whistle? They've got bubble tea, whisky, beer, and wine! For those of you who like to cook, their grocery stores can provide the ingredients, the cooking supplies and even cooking experiences to help you create a 5-star meal at home. Ready? Let's dig in.

**TWYLA CAMPBELL** is a freelance writer and CBC (Edmonton) radio's former restaurant reviewer and food columnist. She is the author of two food-focused books and a go-to source when it comes to the topic of all things culinary. Twyla sits on several national and local food judging panels and is the current editor of Modern Luxuria Magazine.



## BODEGA

410 BASELINE ROAD | [BODEGABYSABOR.CA](http://BODEGABYSABOR.CA)

An offshoot of Sabor, a highly lauded Edmonton restaurant, Bodega continues in the same vein with Spanish and Portuguese food and drink. The menu features a good variety of tapas, so order lots and share with a group to get the best experience. If you're a seafood fan, you'll be happy here with dishes like mussels in saffron cream, seared ahi tuna salad, seafood paella, and Chef Lino Oliveira's legendary piri piri prawns. Meat-lovers are taken care of, too, with grilled beef and rack of lamb and boards overflowing with cured meats like chorizo, smoked duck and jamon Ibérico de bellota, an Iberian black pork that's aged for over 36 months. Those wanting a more vegetable-forward meal will not leave hungry; patas bravas, peppers stuffed with cheese, olives, artichokes and a "breads & spreads" section that'll make your head spin are only some of the meat-free options. Do not leave without having the pastéis de natas, the iconic custard tarts of Portugal. Ending your meal with a glass of port is a solid recommendation, if you're so inclined.



270 BASELINE ROAD | [ACEROSWP.COM](http://ACEROSWP.COM)

## ACERO

The word means maple, in Italian, and is a nod to Italian fare in the Land of the Maple Leaf. The view of the venue from the street, belies what's being served by the capable crew in the kitchen. Acero offers made-from-scratch traditional dishes like arancini, calamari, and goat cheese bruschetta from the antipasti menu, and rigatoni bolognese, taglioni carbonara and cacio e pepe from the pasta section. For heartier fare, look to the Principale menu for braised short ribs on polenta, steak with pasta tossed in olive oil and garlic, or house-made porchetta with tender gnocchi coated in marinara. There is an impressive list of options for seafood lovers, vegetarians and people looking for gluten free fare, and 10 flatbreads for those craving piping hot, wood-fired pizza. Grab a seat at the bar for cocktails and appetizers or bring the whole family. There's room for everyone.



## ROASTI

A coffee shop that roasts its beans on-site and offers a setting that's both inviting and Instagrammable has become a hub not only for neighbourhood residents but also for folks who want comfort and community connection. Edison lighting and hanging plants lend a natural, botanical vibe that help to soften an otherwise industrial space. This is the place to visit with friends, read a book, or work on the laptop. The Roasti Coffee Company manages to be calming and inspiring at the same time. Most of the baked goods are supplied by the Everyday Food Co., a few doors down and known for their hearty, homemade offerings, so count on good food to go with that great coffee. Brazil provides the majority of Fair Trade beans with other countries supplying on a rotational basis. If you want to enjoy Roasti coffee at home, you can buy the beans and the equipment to accomplish that but you'll be missing out on the vibe which is consistently warm and friendly.

52 BRENTWOOD BOULEVARD | [ROASTI.CA](http://ROASTI.CA)

## BARR ESTATE WINERY

51526 RGE RD 231 | [BARR.CA](http://BARR.CA)

Portugal may be known for its port, Spain for its sherry, and Alberta, while not known for its wine production, could be known for its fortified sour cherry wine if Amy and Rick Barr have any say in the matter. Located south of Sherwood Park on a working sheep and fruit farm, Barr Estates Winery challenges you to dispense of preconceptions—namely those involving fruit wine. Amy and Rick make four spectacular wines, The Other Red (raspberry), The Barb (rhubarb) The Rhuby (rhubarb/strawberry) and The Jewel™ (sour cherry fortified wine) from plants that have been producing fruit for nearly a century, in some cases. With beautiful vintage buildings and trees and plants in full bloom during spring, summer and fall, the setting lends itself well for private parties including weddings. Come see for yourself. Stroll the fields of raspberry, rhubarb and sour cherries. Taste the wine. Pet the animals. Bring the cheese and have a picnic. Tours are available from May to October.





## SAWADDEE

664 WYE ROAD | [SAWADDEETHAICUISINE.CA](http://SAWADDEETHAICUISINE.CA)

The name of this restaurant means “hello” in Thai. The exterior is unassuming and gives no indication of what’s inside. The bold, magenta-coloured walls and bright white accents give Sawaddee a modern look but the food is entirely traditional. This mom-and-pop shop has never deviated from their values or their mission, and that’s to cook honest, flavourful food the way it was made for them growing up near Bangkok. Their devotion is apparent in every bowl of green, red and yellow curry, every noodle dish, and every flavorful creation like larp (minced pork with aromatics) or tom yum goong, a bowl of shrimp and mushrooms in a spicy, lemongrass broth. Make sure to try the signature dish of Chiang Mai called khao soi. It may be lesser known than the ubiquitous pad Thai, but just as delicious and highly addictive.



## L'OCA QUALITY MARKET

340 BASELINE ROAD | [LOCA.CA](http://LOCA.CA)

L'OCA is a grocery store with more, including two restaurants, a gelateria, a coffee and pastry bar, a bakery, a butchery, a fresh flower section, a kitchen for cooking classes, an expansive outdoor patio, and a liquor store. L'OCA's grocery section will appeal to cooks of all levels, but the gourmand might be particularly attracted to the availability of items like acorn-fed Iberian ham, or the wildly popular “cowboy butter” and hard-to-find cuts of beef like picanha and Thor's Hammer. Time it right, and you can break for a slice of fresh-baked pizza in the hot foods section before completing your grocery run. If you need to have dinner on the table in a hurry, ready-made heat-and-serve foods are available as well as L'OCA's made-in-house sauces, dressings, soups, and ready-bake entrees.

Pyro and Oro, the on-site restaurants, offer two distinct gastronomical experiences, depending on your wants and needs. Enjoy a more casual affair at Pyro with fantastic happy hour options and a menu that offers foods grilled on Canada's largest wood-fired grill. At Oro, sink into velvet-upholstered booths and dine by candlelight for date night, special occasions, or even business luncheons and dinners in a more formal setting. Watch for their “taste of Italia” feature menu every month that highlights a particular region of a country famous for its food and wine history. From traditional dishes like cacio e pepe to beef ragu, Oro promises a culinary journey around Italy that simultaneously satiates and intoxicates.



## BOBA BAR

3850 SHERWOOD DRIVE | [BOBABAR&P.SQUARE.SITE](http://BOBABAR&P.SQUARE.SITE)

If you've never had bubble tea, this is a great place to start. Richard and Arianne Chu, the husband-and-wife team behind this Taiwanese drink-based business are ready and willing to give customers a full tutorial, including information on ingredients and the importance of shaking the drink before inserting the straw (key intel for bubble tea newbies, as it happens). All recipes were created by Richard who, along with his wife, place quality above all else. Fresh fruit is used to make the purees and slushes, sugar cane, rather than high fructose syrups is used to sweeten the drinks, and ceremonial grade matcha from Japan is used for the matcha drinks. The options for flavours, toppings, jellies and boba (the chewy tapioca starch pearls that make bubble tea so much fun to drink) are endless.







## MALINA BAKERY

3001 BUCKINGHAM DRIVE | [MALINABAKERY.CA](http://MALINABAKERY.CA)

Lattes and lamborghinis, anyone? Machiattos and Maseratis? You can have all four at Malina Bakery—the shop shares a wall of windows with Sherwood Motorcars allowing customers to check out the luxury inventory and dream of fast and furious things while enjoying special coffees and traditional Ukrainian food. The number of interesting, fresh-baked, sweet, and savoury goods make choices difficult at Sergei and Anna Stepanets' bakery, but that's okay; you'll just have to take something to enjoy later, or for coffee break with the crew—poppyseed pastries, sour cherry vatrushkas, sausage rolls, flaky walnut twists are all great options. Take home some frozen foods for an easy dinner; like all the food here, the perogies, nalysnyky (cottage cheese crepes), borscht, cabbage rolls and other Ukrainian specialties are made from scratch and are based on cherished recipes from Anna's baba.

The room is small, the food is fierce, and quality fresh fish is at the forefront. Kobachi is dedicated to serving sustainable and locally sourced food and is the first sushi restaurant in Sherwood Park to be partnered with Ocean Wise. Owner, Ron Elmaleo, serves top-notch Japanese nosh like hamachi sashimi with pickled plum vinaigrette; seared, skin-on sea bream with ponzu and citrus pepper; buttery yellowtail tuna, velvety king salmon, silky sea scallops and other flavourful fare, all expertly prepared. You won't find ramen or tempura, but there is an occasional udon bowl, with curries appearing every now and then. Having grown up cooking with his parents and then working in restaurants abroad and in the USA, this chef's culinary talent runs deep. If delicacies like uni from Hokkaido and A5 wagyu from the Myazaki prefecture are available, grab them while you can. Seasonal desserts like fried mochi and walnuts speaks to the level of skill and creativity of the chef. What to drink with this thoughtful food? Sake, shochu, and plum wine, of course, and a zippy lager by a local brewery, Manual Labour. A Japanese soda and fresh yuzu juice are also on the menu, along with Matsukaze organic black Oolong tea, hot or cold. Kobachi is one spot to put on the "must eat" list but word to the wise: make reservations, or you'll be finding yourself on the outside looking in.

200 FESTIVAL LANE | [KOBACHI.CA](http://KOBACHI.CA)

## KOBACHI



## MANUAL LABOUR

Businesses in unexpected locations that offer good products are always worth the trek. Manual Labour is one of those places. Located in an industrial park in the northeast corner of Sherwood Park, you'd do well to not judge a book by its cover—or the offerings by the exterior, in this case, because what's inside this non-descript building is exceptionally good craft beer, cider and thoughtfully sourced food offerings. The front patio is the preferred place to be on warm days and those in-the-know know that the pinball games upstairs are free to paying customers. So, stay inside, find a table outdoors, or belly up to the bar—any seat is a good seat at this brewery. Fair warning, after a pint or two, you might feel the call to join the "mug club." Members get their names etched on tall glasses that are then displayed behind the row of taps until needed. This membership has its privileges, of course; you're just going to have to sign up to find out what they are. (Spoiler alert: it pays to be a member here.)

280 PORTAGE CLOSE | [MANUAL-LABOUR.CA](http://MANUAL-LABOUR.CA)





## THE OTHER PLACE

800 BROADMOOR BOULEVARD | [THEOTHERPLACE.CA](https://www.theotherplace.ca)

This is, literally, the other place owned by Carlos O'Farrill and his partner, Janette. The couple's first "place" is actually a foodtruck called casa12doce that they opened in 2013 followed by a second place (a bricks and mortar space) called La Patrona. The Other Place, established in 2021, is technically the third place owned and operated by this industrious pair, and while the common thread is Mexican food, the three businesses are distinctly different. While the foodtruck's menu is limited to mainly tacos and tortas, La Patrona offers a bounty of dishes the chef learned to cook from his mother before leaving Mexico for the USA and then Canada. At The Other Place, the chef takes creative license by marrying the foods of other cultures with his native dishes. Adventurous eaters might opt for the pinche loco chicken wings tossed in a tangy, smoky pepper sauce, or stay more classic with the Frank's RedHot option. Purists will love the American cheeseburger but daredevils will be tempted by the Hugo, a burger consisting of a chorizo patty and a beef patty under a stack of toppings like mozzarella, onions and sauteed jalapeno peppers. Go on a culinary adventure with friends: order the Alambre tacos for a taste of Mexico — there's enough to share — and split a barbacoa (sirloin and brisket) pizza to satisfy your Italian cravings. Don't forget the drinks. Cocktails are on point. A flight of margaritas is a great way to sample some of the bartender's best creations.



## EVERYDAY FOOD CO.

Be prepared for lineups — especially if you're there on a Friday for the best beef dip this side of anywhere. All menu items at Everyday Food Co. are made from scratch, including the bread, the baked goods, the soups and the desserts. Portions are generous, sandwiches are messy (grab extra napkins) and the staff are friendly and as patient as saints. Regular customers know to phone in their orders ahead of time to avoid crowding the small space but if you do have to wait in line chances are you'll make a new friend or two by the time your food is ready. This place has heart and wickedly delicious food. Each day offers a daily feature but every item on any given day is worth your dining dollars.

52 BRENTWOOD BOULEVARD | [FACEBOOK](https://www.facebook.com/everydayfoodco)

Located inside Greenland Garden Centre, Branches is many things to many people. It's a place to grab a coffee and a pastry, a place for wood-fired pizza, or an oasis that provides respite from a long day of shopping during planting season. A word of caution: it's also the type of place where you go for brunch and come home with a complete clothing ensemble including jewellery and footwear from Greenland's expansive retail section. If you arrive at Branches without a reservation, you'll be assigned a device that will buzz once your table is ready. Take that time to browse the property. Shopping for gifts, Christmas decorations or garden necessities year round makes this a beloved and popular destination. Dining at Branches is the cherry on top.

23108 HIGHWAY 16 | [BRANCHESDINING.COM](https://www.branchesdining.com)

## BRANCHES







## ITALIAN CENTRE SHOP

8005 EMERAL DRIVE | [ITALIANCENTRE.CA](https://italiancentre.ca)

In 2021, Teresa Spinelli, opened an Italian Centre Shop in the northeast end of Sherwood Park. Her late father, Frank, would be proud. Teresa has grown the business that Frank started in 1959 with one tiny store to a 5-store empire. While the Sherwood Park location sports modern design and finishing touches, it also retains the community-minded ambience and essence of the original store in downtown Edmonton that clients have long supported. At 22,500 square feet, the Sherwood Park store is the largest (so far) with a vibrant fresh produce section, aisles dedicated to dried pasta and olive oil, a kitchenware section stocked with everything from salad bowls to pizza stones, and shelf upon shelf of fresh and canned goods from around the world. A nearly 75-foot-long deli counter contains over two dozen types of olives and a bounty of cured meats from several countries. If you're needing ingredients for the ultimate charcuterie spread, this is the place. This is also the place for the pre-made mild or hot Italian sandwiches that have developed a cult-like following over the decades. The Italian Centre Shop is the grocery store you go to when you need sardines from Spain and pickles from Poland but it's also the place to meet friends and catch up. If you go, add some time to sit and feast at the tavolo caldo (hot table) or contemplate life over an espresso and fresh-baked pastry in the café or patio, during warmer weather. Chances are, someone you know will be there doing the exact same thing.

DOWNLOAD  
THIS GUIDE!



[strathcona.ca/goguide](https://strathcona.ca/goguide)

# RESTAURANTS

These independent restaurants are the lifeblood of a community. A wonderful collection of tastes from around the world can be found right here in Strathcona County. Go and find your favourite! #GoStrathco

### A Taste of Vietnam

975 Broadmoor Boulevard  
T: 780-416-4436  
W: [atasteofvietnam.ca](https://atasteofvietnam.ca)

### Ardrossan Pizza

53073 Range Road 222  
T: 780-619-2222  
W: [ardrossanpizza.ca](https://ardrossanpizza.ca)

### Banh Mi Zon

140 Athabasca Ave  
T: 780-449-3334  
W: [banhmizon.ca](https://banhmizon.ca)

### Big Bear Sandwich Co.

2016 Sherwood Drive  
T: 587-269-0899

### Bodega Tapas Bar by Sabor

210 Baseline Road  
W: [bodegabysabor.ca](https://bodegabysabor.ca)

### Branches

23108 Highway 16  
T: 780-467-3443  
W: [branchesdining.com](https://branchesdining.com)

### Brentwood's Pizza and Donair

1995 Brentwood Boulevard  
T: 780-449-0909

### Burger Bay

101 Granada Boulevard  
T: 780-570-7575

### Café Celeste Bistro

590 Baseline Road  
T: 780-570-0790  
W: [cafecelestebistro.ca](https://cafecelestebistro.ca)

### Caffrey's

99 Wye Road  
T: 780-449-7468 or 780-464-6699  
W: [caffreys.ca](https://caffreys.ca)

### Clark's Restaurant

130 Broadway Boulevard  
T: 780-416-9228  
W: [clarksrestaurant.ca](https://clarksrestaurant.ca)

### Co Do Hue

220 Lakeland Drive  
W: [codohue.ca](https://codohue.ca)

### Cheestix Café

501 Bethel Drive  
T: 587-269-2201  
W: [cheestixcafe.com](https://cheestixcafe.com)

### China Kitchen

993 Fir Street  
T: 780-449-3307  
W: [chinakitchenab.com](https://chinakitchenab.com)

### Delicious Pho

222 Baseline Road  
T: 780-416-8390  
W: [deliciouspho.ca](https://deliciouspho.ca)

### Donair and Shawarma House

800 Broadmoor Boulevard  
T: 780-570-0270  
W: [donairandshawarmahousesherwoodpark.com](https://donairandshawarmahousesherwoodpark.com)

### Everyday Food Co.

52 Brentwood Boulevard  
T: 780-417-5808

### Famous Donair

1080 Strathcona Drive  
T: 780-416-1833  
W: [famousdonair.ca](https://famousdonair.ca)

### Game On

390 Baseline Road  
W: [gameonsp.ca](https://gameonsp.ca)

### Golden Capital

1020 Sherwood Drive  
T: 780-464-2232  
W: [goldencapital.ca](https://goldencapital.ca)

### Golden 88

65 Graham Road  
T: 780-417-0221

### Gregg Mediterranean

220 Lakeland Drive  
T: 780-667-0050  
W: [greggexpress.com](https://greggexpress.com)



### H-21 Pub and Grill

51073, Highway 21  
T: 780-417-0886  
W: [h21pubandgrill.ca](https://h21pubandgrill.ca)

### Headquarters Restaurant and Bar

101 Granada Boulevard  
T: 780-449-5029

### Hui's Wontons

130 Broadway Boulevard  
T: 780-449-3688  
W: [huiswontons.com](https://huiswontons.com)

### India Taj

3850 Sherwood Drive  
T: 780-449-1145

### Kobachi

200 Festival Lane  
T: 780-570-5858  
W: [kobachi.ca](https://kobachi.ca)





## RESTAURANTS

### **La Fabbrica del Gusto**

800 Broadmoor Boulevard  
T: 587-269-5224  
W: [fabbricaitaliano.com](http://fabbricaitaliano.com)

### **Lahore in Town**

120 Wye Road  
T: 780-467-1211  
W: [lahoreintown.ca](http://lahoreintown.ca)

### **La Patrona**

2 Athabasca Avenue  
T: 780-570-1200  
W: [lapatrona.rocks](http://lapatrona.rocks)

### **Mazati Mediterranean Cuisine**

25 Sioux Road  
T: 780.449-0485

### **Mazati VIP Mediterranean**

3880 Sherwood Drive  
T: 587-200-0677

### **Mexico Lindo Tacos and Grill**

2755 Broadmoor Boulevard  
T: 780-464-0528  
W: [mexicolindotacos.ca](http://mexicolindotacos.ca)

### **New Asian Village**

10 Main Boulevard  
T: 780-464-6662  
W: [newasianvillage.com](http://newasianvillage.com)

### **Nitza's Pizza**

300 Amberley Way  
T: 780-417-6666  
W: [nitzaspizza.ca](http://nitzaspizza.ca)

### **Oro Trattoria**

340 Baseline Road  
W: [orotrattoria.ca](http://orotrattoria.ca)

### **Panini's Italian Cucina**

222 Baseline Road  
T: 780-410-0901  
W: [paninisitalian.com](http://paninisitalian.com)

### **Park Sports Bar & Grill**

3810 Sherwood Drive  
T: 587-456-9026  
W: [psbgrill.com](http://psbgrill.com)

### **Pasta Pantry**

101 Granada Boulevard  
T: 780-467-3777  
W: [pastapantry.ca](http://pastapantry.ca)

### **Phat Boy Cheesesteaks**

270 Baseline Road  
T: 780-862-8666  
W: [phatboycheesesteaks.ca](http://phatboycheesesteaks.ca)

### **Polos Social Lounge**

950 Emerald Drive  
T: 780-570-1550  
W: [poloslounge.com](http://poloslounge.com)

### **Premium Pizza and Donair**

120 Wye Road  
T: 780-449-5100  
W: [premium-pizza.ca](http://premium-pizza.ca)

### **Pyro**

340 Baseline Road  
W: [pyrogrill.ca](http://pyrogrill.ca)

### **Rau Vietnamese Kitchen**

1080 Strathcona Drive  
T: 780-449-2040  
W: [rauvietnamesekitchen.ca](http://rauvietnamesekitchen.ca)

### **Ruamit Thai**

52 Brentwood Boulevard  
T: 780-449-0673  
W: [ruamitthai.ca](http://ruamitthai.ca)

### **Rob's Donair**

390 Baseline Road  
T: 780-570-1114

### **Rocky's Donair**

99 Wye Road  
T: 780-416-8055  
W: [rockysdonair.ca](http://rockysdonair.ca)

### **Rosie's in the Park**

114 Athabasca Avenue  
T: 587-269-1634

### **Saigon Cuisine**

221 Chippewa Road  
T: 780-449-5499  
W: [saigoncuisine.ca](http://saigoncuisine.ca)



## DISCOVER STRATHMA!

Explore fascinating exhibits and local artifacts that bring the past to life -  
plan your visit today!

FREE DROP-PROGRAMS  
EVERY SATURDAY!

STRATHMA.CA 780.467.8189







## RESTAURANTS

### **Spinelli's Bar Italia**

8005 Emerald Drive  
T: 780-424-4869 Head Office  
W: [italiancentre.ca/spinellis-bar-italia](http://italiancentre.ca/spinellis-bar-italia)

### **Sumo Sumo**

220 Lakeland Drive  
T: 780-416-7866  
W: [sumosumosushi.com](http://sumosumosushi.com)

### **Sunny Side Up**

10 Main Boulevard  
T: 780-379-1111  
W: [ssup.ca](http://ssup.ca)

### **Sushi 11**

222 Baseline Road  
T: 780-570-3136

### **Taste of India Express**

101 Granada Boulevard  
T: 780-570-5353  
W: [tasteofindiaexpress.ca](http://tasteofindiaexpress.ca)

### **Thai Together**

3830 Sherwood Drive  
T: 780-416-3880  
W: [thaitogether.net](http://thaitogether.net)

### **That Bar-B-Q Place**

220 Lakeland Drive  
T: 780-570-5880  
W: [thatbarbqplace.com](http://thatbarbqplace.com)

### **The Bankhead**

1005 Provincial Avenue  
T: 587-269-5000  
W: [thebankheadrestaurant.ca](http://thebankheadrestaurant.ca)

### **The Crooked Mouth Pub**

221 Chippewa Road  
T: 780-467-0052  
W: [thecrookedmouth.ca](http://thecrookedmouth.ca)

### **The Koi Sushi Bar and Grill**

120 Wye Road  
T: 587-269-2994

### **The Other Place by La Patrona**

800 Broadmoor Boulevard  
T: 780-570-2900  
W: [theootherplace.ocks](http://theootherplace.ocks)

### **The Purple Perogy**

993 Fir Street  
T: 780-217-5099  
W: [purpleperogy.com](http://purpleperogy.com)

### **The Soup and Sandwich Co.**

2833 Broadmoor Boulevard  
T: 780-570-2929  
W: [soupandsandwichco.com](http://soupandsandwichco.com)

### **The Stone & Wheel Pizzeria**

115 Tisbury Way  
W: [thestoneandwheel.ca](http://thestoneandwheel.ca)

### **Toast**

270 Baseline Road  
T: 780-467-8825  
W: [toastbl.com](http://toastbl.com)

### **UFO Pizza**

220 Lakeland Drive  
T: 780-660-6066  
W: [ufopizza.ca](http://ufopizza.ca)

### **Vicky's Bistro and Wine Bar**

501 Festival Avenue  
T: 780-417-1750  
W: [vickys.ca](http://vickys.ca)

### **Woodshed Burgers**

975 Ordze Road (inside Golf Den)  
P: 780-570-5336  
W: [robertspencerhosp.com](http://robertspencerhosp.com)

### **Winston's Fish and Chips**

160 Broadway Boulevard  
T: 825-218-3493  
W: [winstonsfnc.com](http://winstonsfnc.com)

### **Yoshi**

1995 Brentwood Boulevard  
T: 780-467-2228  
W: [yoshisherwoodpark.ca](http://yoshisherwoodpark.ca)

### **Willy's Pizza Bar and Grill**

990 Lakeland Village Boulevard  
T: 780-449-2424  
W: [willys-restaurant.ca](http://willys-restaurant.ca)

### **Zigle Korean Bulgogi Restaurant**

800 Broadmoor Boulevard  
T: 825-967-1140  
W: [zigle.ca](http://zigle.ca)



## COFFEE SHOPS, BREWERIES & DISTILLERIES

There is a dramatic and exciting growth happening in and around Strathcona County. With this growth, local entrepreneurs are creating some of the best places for you to come to and feel like part of the family. Sip, savour and stay for a while. #GoStrathco

### **Barr Estate Winery**

51526 Range Road 231  
T: 780-819-9463  
W: [barr.ca](http://barr.ca)

### **Boba Bar**

3850 Sherwood Drive  
T: 780-570-1333  
W: [bobabarsp.square.site](http://bobabarsp.square.site)

### **Café Haven**

9 Sioux Road  
T: 780-417-5523  
W: [cafehaven.ca](http://cafehaven.ca)

### **Café L'ocale**

340 Baseline Road  
T: 587-871-5622  
W: [loca.ca/locale](http://loca.ca/locale)

### **Dabang Coffee Café**

100 Broadview Drive  
T: 780-570-4653  
W: [thegolfstadium.com/cafe](http://thegolfstadium.com/cafe)

### **Hawke Prohibition Distilleries**

426 Kaska Road  
T: 825-522-0002  
W: [hawkeprohibition.com](http://hawkeprohibition.com)

### **Gratitude Coffee**

2833 Broadmoor Boulevard  
T: 780-952-0881  
W: [gratitudecoffee.ca](http://gratitudecoffee.ca)

### **Spinelli's Bar Italia**

8005 Emerald Drive  
T: 780-416-4869  
W: [italiancentre.ca/spinellis-bar-italia](http://italiancentre.ca/spinellis-bar-italia)

### **Square 1 Coffee**

115 Tisbury Street  
W: [square1coffee.ca](http://square1coffee.ca)

### **Manual Labour Beer Co.**

280 Portage Close  
T: 587-269-0414  
W: [manual-labour.ca](http://manual-labour.ca)

### **Morning Brew 192**

51056 Range Road 204  
T: 780-662-2494  
W: [morningbrew192.com](http://morningbrew192.com)

### **Remedy**

200 Festival Lane  
T: 780-449-4170  
W: [remedycafe.ca](http://remedycafe.ca)

### **Roasti Coffee Co.**

52 Brentwood Boulevard  
T: 780-938-3288  
W: [roasti.ca](http://roasti.ca)

### **The Colombian**

11 Athabaskan Avenue  
T: 587-269-5196  
W: [thecolumbian.ca](http://thecolumbian.ca)

### **70 Acre Brew Co.**

6000 Buckingham Drive  
T: 587-456-8381  
W: [70acre.com](http://70acre.com)

### **More local distillers to enjoy**

W: [doege.ca](http://doege.ca)  
W: [elkislanspirits.com](http://elkislanspirits.com)  
W: [foxhillscidery.com](http://foxhillscidery.com)

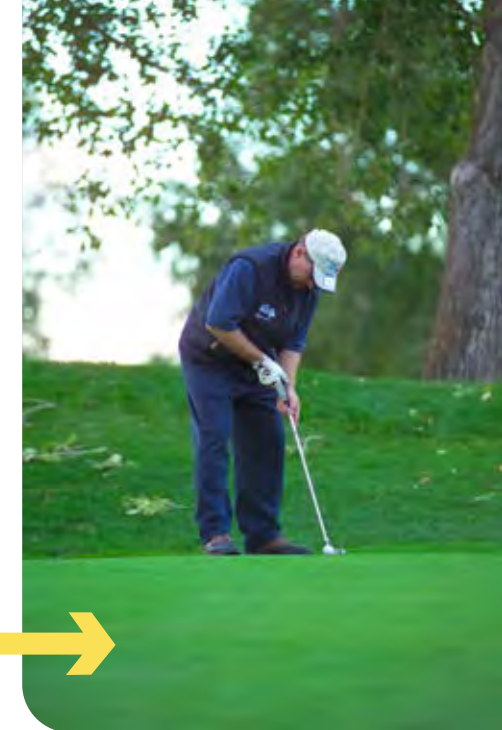




Photo: Mike Scott



Photo: Travel Alberta



## SPRING ITINERARY

### DAY 1

Wallish, Hastings Lake, Aspen Ridge, and Estate Gardens greenhouses are opening their doors to invite you to brighten your day with flowers to delight your senses.

It's important to keep yourself hydrated while out and about. Stop by [Roasti](#) to pick up a refreshing drink and enjoy the cozy location. If you're lucky, you might be able to watch the coffee roasting process as it happens!

Head to [Crooked Mouth Pub](#), a locally owned British style pub and the perfect place to sit back and relax while listening to some home-grown talent at open mic night. They also bring in performers every weekend and Thursday nights are quiz night!

### DAY 2

The [Biodiversity Trail](#) in the [Beaver Hills Biosphere](#) is a great place for a walk as it's only about 2 kilometres long. Here you can see many species of birds and nature's splendor.

After your hike, satisfy your hunger at [The Koi](#) – they are ready to soothe your sushi cravings. Their menu includes sashimi, nigiri, tatakis, BBQ, skewers, and more.

[Festival Place](#) is a great place to wrap up your day when you're looking to enjoy some live performances. There's always an exciting schedule with a huge range of performances that are sure to cater to everybody's tastes.

### DAY 3

Start your morning off by stopping by [L'OCA Quality Market](#). Here you can enjoy your morning coffee and a light breakfast at [Cafe Locale](#). You can also pick up your groceries for the day, have a cooking class experience, and grab a bottle of wine to bring home to enjoy.

[Vicky's Bistro](#), a locally owned restaurant and wine bar, has fused Mediterranean and Western cuisine and is an excellent option for lunch. They have a great patio to enjoy as the weather gets warmer.

In the evening, head to [Sherwood Bowl](#) to hear the dulcet tones of bowling balls crashing and pins getting knocked over. They also have glow bowl every weekend!

## SUMMER ITINERARY

### DAY 1

Drive to the [Ukrainian Cultural Heritage Village](#) for a place to enjoy learning about Alberta's connection with Ukraine at the open-air museum and take in live performances at the Band Shell Stage.

There are 4 farmers' markets in and around Strathcona County. The [Sherwood Park](#), [ARAS Ardrossan](#), [South Cooking Lake](#) and [Salisbury](#) markets each have unique and exciting local goods for you to take home. This is a great way to support local!

Enjoy the setting sun on the patio of [70 Acre Brew Co.](#) This is Sherwood Park's first brewery! This pet friendly taproom has a great selection of craft brews, food offerings and boardgames to enjoy with friends and family.

### DAY 2

The sun is slowly rising and dew is on the grass – this is the perfect time to grab the clubs and go golfing at one of the many courses in Strathcona County. [The Broadmoor](#), located in the heart of Sherwood Park, offers 18 holes, driving range, proshop, restaurant and lounge.

Experience Strathcona County's vibrant culture and natural history, from the distant past to today at the [Strathcona County Museum and Archives](#). They offer exhibits to immerse, programs to engage, and events to entertain and educate.

After the day's events, you've worked up quite the appetite! With a focus on serving hot, delicious comfort food for your family, [Pasta Pantry](#) is the place to go for quality Italian food.

### DAY 3

[Gallery@501](#) supports, inspires and grows a love of the arts in our community and beyond. Discover diversity in art styles, art media, voices and perspectives from contemporary local and national Canadian artists through virtual and in-person exhibitions.

[Ridge Wilderness Adventures](#) offers a variety of canoe-based adventures and lessons on Astotin Lake and Elk Island National Park. All programs are designed to build independence and confidence in the wilderness and on the water!

The best way to finish the day? [WOW! Factor Desserts](#) makes delicious cheesecakes, cakes, tortes, pies and flans. It will be hard for you to choose only 1 to take with you.



# on the LOOKOUT for LOCAL

#GoStratho #SupportLocalBusiness

Now, more than ever, is the time to support your local businesses. It is a powerful way to strengthen our community, foster unique and diverse offerings, and ensure that our neighbors thrive. Be sure to check product labels or speak with the local business owner.

Learn how you can support local and see the benefits of doing so [strathcona.ca/supportlocal](http://strathcona.ca/supportlocal)



**Sherwood Park Soups** is a quick, easy and delicious way to feed and please your family.

[@sherwoodparksoups](https://www.sherwoodparksoups.com)

**Pierogerie** is Alberta's first authentic organic pierogi maker and they also offer farm experiences. [@pierogerie](https://www.pierogerie.com)



**Cozy Chair** believes you should be able to enjoy being outside in our ever changing Canadian weather doing the things you love while staying warm!

[@cozychairco](https://www.cozychairco.com)



**Roasti Coffee Co.** provides specialty roasted coffee in an accessible and approachable way that elevates an everyday experience.

[@roastcoffee.co](https://www.roastcoffee.co)



**Giselle Denis** is an internationally acclaimed, award-winning Artist and performance painter. Book a visit to her gallery.

[@giselledenisfineart](https://www.giselledenisfineart.com)

**Anahola Board Co.** makes paddleboards for lakes, rivers and oceans. Purchase and rental options available.

[@anaholaboardco](https://www.anaholaboardco.com)





## STRATHCONA COUNTY

# Origins

– Information and archival images were provided by Strathcona County Museum & Archives –

Strathcona County's history is deeply connected to the Indigenous communities who have lived in the Beaver Hills (amiskwacis waskayhikan) for millennia. The Plains Cree, Métis, Blackfoot, Saulteaux, and Nakoda Sioux thrived in this resource-rich region. In the 1880s, the Papaschase Reserve (IR #136) was established but later lost due to settler expansion. Today, no land in Strathcona County is officially held by Indigenous communities, though their history remains interwoven with the region's landscape and place names.

The foundation of Strathcona County as it is known today began with the rise of homesteading in the 1890's, spurred by the arrival of the C&E Railway in 1891 and the Grand Trunk Pacific Railway in 1908–1909. Settlements like Clover Bar, Ardrossan, and Deville grew rapidly. Agriculture, coal mining, and logging flourished, driven by immigration policies championed by figures like Lord Strathcona and Clifford Sifton.

Clover Bar's history is also tied to mining, named after settler Tom Clover, who panned for gold on the North Saskatchewan River in 1859.

Alongside him, R.P. Ottewell was among the first settlers, establishing a homestead in 1881. These early settlers laid the foundation for Strathcona County's development, transforming it into a thriving agricultural and industrial region that continues to evolve today.

From its Indigenous roots to its rise as a railway and agricultural hub, Strathcona County's history is one of resilience, adaptation, and growth. Its landscapes and communities reflect the layered histories of the people who shaped it, ensuring its story continues to be told for generations to come.

Join the Strathcona County Museum & Archives (Strathma) on a tour throughout the County's historic names and places. With this article as your guide, you can explore a selection of places that have contributed to the County's rich history and culture.



ARCH000986

### Strathcona County Museum & Archives

913 Ash Street may be the current home of Strathcona County Museum & Archives, but did you know this space has had many lives before becoming Strathma in 1997? This land, and much of Sherwood

Park, was the site of John Ball's family homestead! John Ball was a member of one of the earliest immigrant families to homestead here in Strathcona County. In 1959, the building the museum is now in was opened, serving as Fire Hall No. 1, the first fire hall for the volunteer fire brigade. The building was expanded and the RCMP moved in 1967, with the space also serving as the first RCMP detachment in the County. The space was used as the firehall until 1975, and as an RCMP station until 1992. In 1995, the Strathcona County Heritage Foundation took over the building, with the museum grand opening taking place in 1997.



ARCH000957

### Smeltzer House

Built for Maurice Smeltzer, one of the Salisbury district's first homesteaders, this handsome Foursquare has stood steadfast since 1920. Home to the Smeltzers' for more than a half century, "Smeltzer House" lives on as a visual reminder of Strathcona County's pioneering past.



ARCH014038

### Ball Family Windmill

Built about 1930, the windmill had a pump which provided the family with water. The family arrived in the Salisbury District in 1895, and the windmill's original location was on the family homestead (present-day Wye and Ordze Road). It was moved to the present location in Woodbridge in 1979.



ARCH041210

### AJ Ottewell Community Centre

Located on the original homestead of Arthur and Lora Ottewell, the brick house was completed in 1916. The house was moved 50 feet west of its original location and the brick was restored in 1980. A replica of the family's old red barn now serves the Art Society of Strathcona County. Arthur was the son of Richard P. Ottewell who arrived and settled in Edmonton's present-day community of Ottewell, in 1881.

### Monument Park

Monument Park was established in 1993 and is home to an ongoing collection of monuments, including:

- Statue of Lord Strathcona (2000)
- Statue of The Great Sentinel Owl (1993) as a tribute to the Smyth Family

- Statue of Roland Boisvert (1998) commemorates our early residents and their contributions to the community
- The Political Pole (1995) to commemorate the first 50 years of Sherwood Park
- Horse of Selene (1994), a reproduction of a Greek statue from the Parthenon in Athens

This park was built to celebrate the Rotary Club's and Alberta's centennial anniversary, as well as Sherwood Park's 50th anniversary. An 18-foot statue entitled "Salute to Volunteers" was unveiled in 2007.

### Bremner House

The Bremner area is named after Charlie and Edith Bremner, who farmed and owned land in this area. The house was the third (and most grand) house that Charlie built on his homestead. The house and the surrounding 80-acre property were purchased by Strathcona County in 2004 in order to preserve the historical value of the site.

### Beaver Hills Biodiversity Trail

Before it was known as Strathcona County, this land was known as Beaver Hills. This land was and still is an important place that provides a habitat to a diverse range of species. Known as amiskwacyi in Cree, the importance of the region extends beyond its landscape and biodiversity. The Beaver Hills Biosphere was designated by the United Nations Educational, Scientific, and Cultural Organization (UNESCO) in 2016. Within the Biosphere is the Beaver Hills Biodiversity Trail, allowing visitors to explore the best the Biosphere has to offer!

### North

#### Cooking Lake Hotel

Located in a popular summer resort area, people traveled from Edmonton by train to visit. From 1910 Mrs. Mary McMenomy opened a general store, and in c1912 a post office, both in a large tent. In 1914 Mrs. 'Mac' built the well-known hotel, store and post office, remaining until her retirement in 1956. The hotel continued until c1956, the store until 1991, while the post office remains in operation.

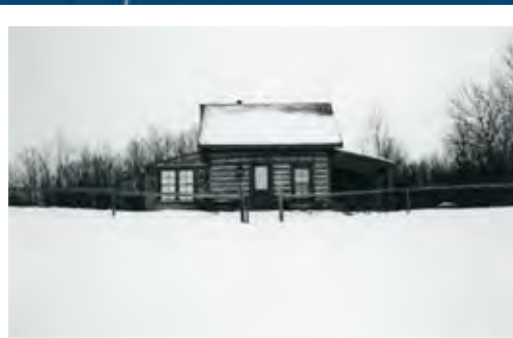
#### St. Margarets Church

St. Margarets Church and Cemetery, built in 1912 near the northeast shore of Hasting Lake, stands as a testament to the Metis families who settled in the area before homesteading began in 1909. Encouraged by Métis Oblate missionary Patrice Beaudry, these families constructed the church, originally named St. Marguerites, forming the heart of the early congregation. Today, the church and cemetery remain significant historical landmarks, with a commemorative plaque honoring the enduring presence of the Métis community in Strathcona County.

In summer 2025, heritage plaques will be installed at the Sherwood Park Natural Area, Broadmoor Lake Park, Ardrossan, South Cooking Lake and County Hall!

*Did you know?*





ARCH23357

#### Maggie's Hill Heritage House

Built in 1891 by the Gladue's, one of the original Métis families at Hastings Lake. Gifted to Margaret ("Maggie") and John Tough upon their marriage, the 600-square-foot log home became the heart of a growing family, raising nine children. Overlooking Hastings Lake, it remains one of the County's oldest surviving homes. Beautifully restored, it now serves as a vacation home, with its owners dedicated to preserving its historic character.

#### Fort Scott – Legion of Frontiersman

The Frontiersmen Cenotaph near Hastings Lake stands as a unique tribute to the Legion of Frontiersmen who served in World War I. Erected in 1935, it is the only monument in Canada dedicated to these war veterans. Behind the cenotaph, a small museum offers a glimpse into their history. Formed in 1904, the Legion was a voluntary group focused on intelligence gathering for the British War Office, with thousands later enlisting in WWI. Nearby, Fort Scott once served as their training base, cementing Strathcona County's connection to this chapter of military history.

#### Cooking Lake Airport

Cooking Lake Airport, Canada's oldest operating public airport, has been a vital hub for aviation since its establishment in 1936. Originally developed for floatplanes, it now features a paved runway, grass strip, taxiways, and a docking area for seaplanes. It remains a key part of Alberta's aviation network, ranking as the province's sixth busiest community airport with 26,000 annual aircraft movements.



ARCH020681

#### Salisbury Petroleum

The Salisbury General Store, established in 1911 at Salisbury Corner, has long been a community hub in Strathcona County. Founded by F.R. Haythorne, the area's first postmaster and a prominent local leader, the store provided essentials like groceries, dry goods, and coal oil while also serving as a post office. Over the years, it changed hands, with



ARCH020614

#### Lakeview Fireplace

Though it's hard to imagine, a fireplace is all that remains of a popular summer resort on the shores of Cooking Lake. Lakeview was built in 1930 and drew crowds from nearby Edmonton – there was even a train in place specifically to bring city folks out to the resort! With a sandy beach, campsites, cottages, and the famous dancehall, Lakeview was a destination here in the County.

Peter and Annie Yohemas becoming beloved proprietors known for their warmth and hospitality. Though relocated in 1964 to accommodate highway expansion, the service station remains in operation today, preserving over a century of local history.

While visiting Strathcona County, stay curious and visit the local Strathcona County Museum & Archives.



913 Ash Street | 780-467-8189  
strathma.ca

The Strathcona County Museum & Archives offers a range of exhibits that connect visitors to the area's rich heritage. From the General Store, Natural History and RCMP and Fire Hall exhibits, guests will see and experience the diverse and significant history of the region. These exhibits, alongside many others, help tell the stories of the people and places that shaped Strathcona County, and we invite everyone to come visit the museum to uncover more of our community's fascinating past.

# UNFORGETTABLE EXPERIENCES



Visitors come here and find a perfect mix of natural, culinary, cultural and agritourism attractions and events. Find the opportunities and support to start your unforgettable experience here. #GoStrathco  
strathcona.ca/tourismhub

STRATHCONA  
COUNTY  
TOURISM

© Curtis Comeau, Travel Alberta



Play & Win...  
ROADTRIP ADVENTURE GAME  
Enjoy our...  
SPECTACULAR ROADTRIPS  
& AWESOME ATTRACTIONS

Plan your  
trip here!



Photo Contest Winner by: Chenée Miller



Photo: Loca Quality Market

# DESSERTS

Life is good in Sherwood Park and Strathcona County. You know what else is good? Decadent sweets! You'll find several ways to satisfy a sweet tooth, from unique candy, to quality homemade chocolate, creamy ice cream and stunning pastries. Come and enjoy the good life! #GoStratho

**AB Exotic**

664 Wye Road  
T: 866-984-1659

**Cafe L'ocale**

340 Baseline Road  
T: 587-871-5622  
W: [loca.ca/locale](http://loca.ca/locale)

**Confetti Sweets**

41 Broadway Boulevard  
T: 780-570-5080  
W: [confettisweets.ca](http://confettisweets.ca)

**Choco-licious**

937 Fir Street  
T: 780-235-8533  
W: [choco-licious.ca](http://choco-licious.ca)

**Dynamite Candy Shop**

3 Deacon Drive  
T: 3820 Sherwood Drive

**Ice Cream Shack**

11 Athabasca Avenue  
T: 780-999-4151  
W: [icecreamshack.ca](http://icecreamshack.ca)

**JACEK Chocolates**

406 Kaska Road  
T: 780-464-5200  
W: [jacekchocolate.com](http://jacekchocolate.com)

**Malina Ukrainian Bakery**

3001 Buckingham Drive  
T: 825-889-0011  
W: [malinabakery.ca](http://malinabakery.ca)

**Rio Vida**

42 Athabasca Avenue  
T: 780-444-3344  
W: [riovidaglutenfree.ca](http://riovidaglutenfree.ca)

**Sherwood Park Bakery**

969 Ordze Road  
T: 780-467-5760  
W: [sherwoodparkbakery.com](http://sherwoodparkbakery.com)

**Sweet Creations**

270 Baseline Road  
T: 780-400-1539  
W: [sweetcreationsbyjohnlory.com](http://sweetcreationsbyjohnlory.com)

**Sweet Gi's**

8405 – 24 Street  
T: 780-983-0256  
W: [sweetgis.com](http://sweetgis.com)

**Twice Cream**

75 Salisbury Way  
T: 581-520-5505  
W: [twicecream.ca](http://twicecream.ca)

**Tupi Bowls**

200 Festival Lane  
T: 780-686-2385  
W: [tupibowls.ca](http://tupibowls.ca)

**Wishes Bakeshop**

800 Broadmoor Boulevard  
T: 780-449-1063  
W: [wishesbakeshop.com](http://wishesbakeshop.com)

**WOW! Factor Desserts**

174 Cree Road  
T: 780-464-0303  
W: [wowfactordesserts.com](http://wowfactordesserts.com)



**Edmonton**

YOUR LOCAL **DINING, ARTS & ENTERTAINMENT** MAGAZINE

We've got you covered,  
no matter where you  
call home, or where  
you roam.

**READ ONLINE NOW!**





+



[infoedmonton.com](http://infoedmonton.com) | [alberta48.ca](http://alberta48.ca)



# BOUTIQUE SHOPPING

Fond memories of a place visited. This is what Strathcona County boutiques offer those who journey to find the uncommon. Here you will find art, clothing and that perfect thing you just can't live without. #GoStrathco

**Baseline Market**  
390 Baseline Road  
(Home Depot parking lot)  
T: 780-760-6807  
W: [baselinefarmersmarket.com](http://baselinefarmersmarket.com)

**Bella Mass Boutique**  
11 Athabasca Avenue  
T: 780-417-3562  
W: [bellamaas.com](http://bellamaas.com)

**Confetti Collective**  
41 Broadway Boulevard  
T: 780-570-5080  
W: [confettisweets.ca/collections](http://confettisweets.ca/collections)

**Country Mercantile Store**  
21273 Wye Road  
T: 780-922-5515

**Farmer & Daughter**  
2008 Sherwood Drive  
W: [farmerdaughterworkshop.com](http://farmerdaughterworkshop.com)

**Fem Haven Boutique**  
321 Kaska Road  
T: 780-716-0347  
W: [femhavenboutique.ca](http://femhavenboutique.ca)

**K-Lee Boutique**  
1020 Sherwood Drive  
T: 587-532-9338  
W: [kleeboutique.com](http://kleeboutique.com)

**Keylime Athletic Wear**  
2693 Broadmoor Boulevard  
T: 780-416-4662  
W: [keylimeathleticwear.com](http://keylimeathleticwear.com)

**Lavender and Lace Boutique**  
117 Pembina Road  
W: [shoplavenderlace.com](http://shoplavenderlace.com)

**Maraki Shoes**  
800 Broadmoor Boulevard  
T: 587-269-4141  
W: [marakishoes.com](http://marakishoes.com)

**MGC Boutique | mygolfcloset™**  
220 Lakeland Drive  
T: 780-570-9753  
W: [mygolfcloset.com](http://mygolfcloset.com)

**Oak & Aspen Soapery**  
W: [oakandaspensoapery.com](http://oakandaspensoapery.com)

**Real Spirit Apparel**  
1995 Brentwood Boulevard  
T: 780-951-7268

**Revolution Boutique**  
975 Broadmoor Boulevard  
T: 780-449-4648  
W: [revolutionboutique.ca](http://revolutionboutique.ca)

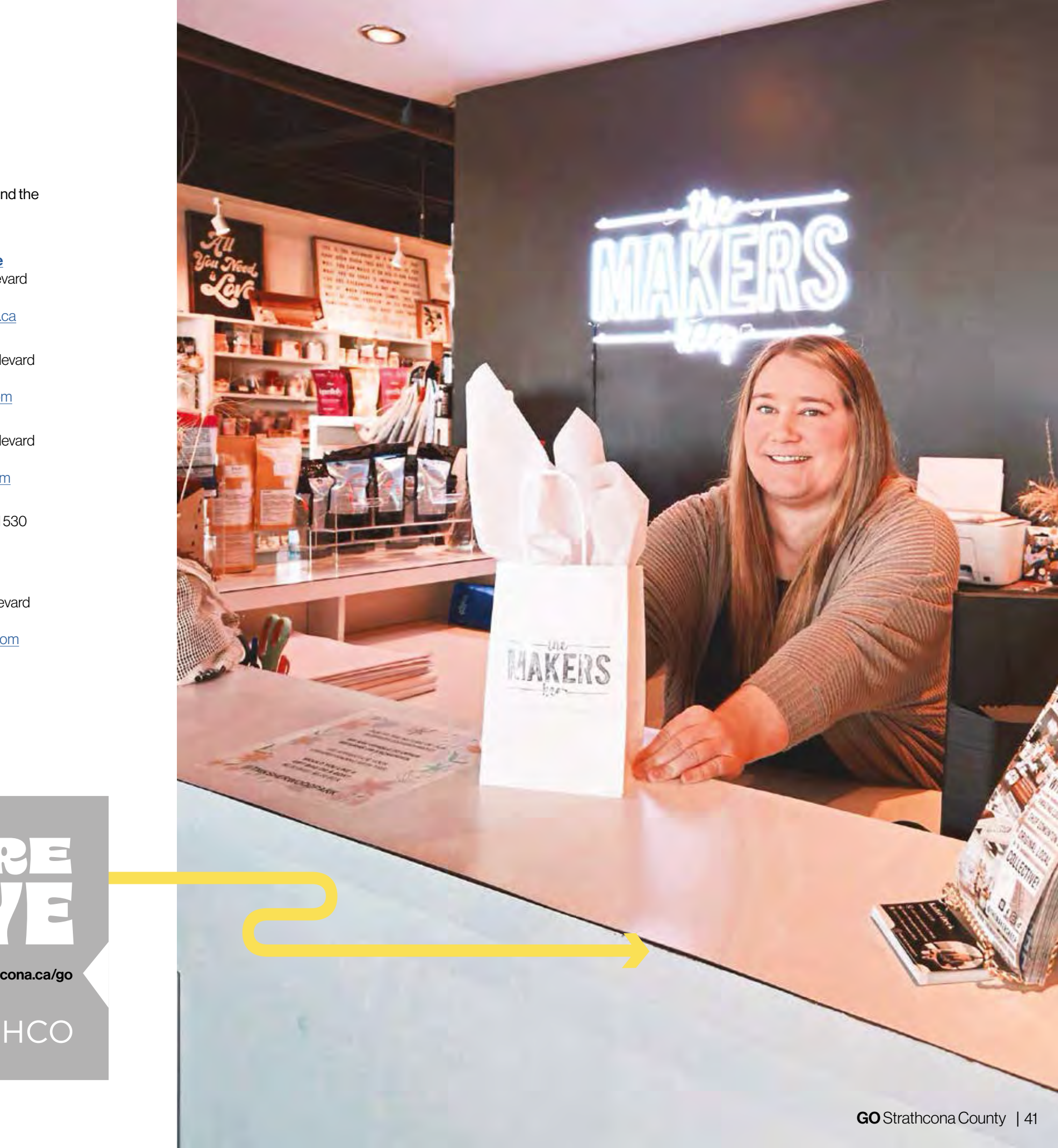
**Statement Junkie**  
2755 Broadmoor Boulevard  
T: 780-467-4440  
W: [statementjunkie.com](http://statementjunkie.com)

**The Makers Keep**  
2755 Broadmoor Boulevard  
T: 587-200-0473  
W: [themakerskeep.com](http://themakerskeep.com)

**Unboutiqued**  
22137 Township Road 530  
(Baseline Road)  
T: 780-922-2281

**Wander**  
800 Broadmoor Boulevard  
T: 780-464-9481  
W: [wanderinthepark.com](http://wanderinthepark.com)

**Wood by Taylor**  
21557 Wye Road  
T: 780-691-8649  
W: [groveonwye.com](http://groveonwye.com)





## LOOK NATURE IN THE EYE

Be surrounded by nature here. [strathcona.ca/go](http://strathcona.ca/go)

**GO STRATHCO**





# SPAS

Feeling overwhelmed? Take a break and unwind at a spa – you deserve it! In Strathcona County, you can slow down, breathe and have quality "you" time with your closest friends. Life's too short to rush through. Slow down, relax, and rejuvenate at a spa today. #GoStrathco

**Azia Spa**

2833 Broadmoor Boulevard  
P: 780-467-2942  
W: [aziaspa.com](http://aziaspa.com)

**Beauty in the Park**

2020 Sherwood Drive  
P: 587-269-2696  
W: [beautyinthepark1.wixsite.com/website](http://beautyinthepark1.wixsite.com/website)

**Blush**

2257 Premier Way  
P: 825-439-6769  
W: [blush-artistry.ca](http://blush-artistry.ca)

**Body & Soul Day Spa**

160 Broadway Boulevard  
P: 780-417-1222  
W: [body-and-soul.ca](http://body-and-soul.ca)

**Body Roll Spa**

65 Chippewa Road  
P: 587-703-8267  
W: [bodyrollspa.com](http://bodyrollspa.com)

**Calla Beauty Salon**

10 Ridgemont Way  
P: 780-417-9900  
W: [callabeautyboutique.com](http://callabeautyboutique.com)

**Emerald Spa & Bistro**

897 Pembina Road  
P: 587-594-1872  
W: [emeraldspabistro.ca](http://emeraldspabistro.ca)

**Float Wellness**

85 Cranford Way  
P: 780-570-2222  
W: [floatwellness.ca](http://floatwellness.ca)

**HQ Salon**

10E Main Boulevard  
P: 780-464-4247  
W: [hqsalonspa.ca](http://hqsalonspa.ca)

**Lavish Beauty Lounge**

55 Salisbury Way  
P: 780-937-8084  
W: [lavishbeautyloungeregina.com](http://lavishbeautyloungeregina.com)

**Namaste Wellness and Day Spa**

2016 Sherwood Drive  
P: 780-467-9809  
W: [namastespa.ca](http://namastespa.ca)

**REN Massage and Wellness**

47 Athabasca Avenue  
P: 780-449-7074  
W: [renmassageandwellness.com](http://renmassageandwellness.com)

**ROXX Salon and Spa**

2693 Broadmoor Boulevard  
P: 780-449-6545  
W: [roxxsalon.com](http://roxxsalon.com)

**The Baby Spa**

140 Athabasca Avenue  
P: 780-400-8667  
W: [thebabyspa.ca](http://thebabyspa.ca)

**Therapeutic Body Concepts**

11 Athabasca Avenue  
P: 780-456-1868  
W: [therapeuticbodyconcepts.ca](http://therapeuticbodyconcepts.ca)

**VADARA Salon Spa**

501 Bethel Drive  
P: 780-570-5977  
W: [vadarasalonspa.com](http://vadarasalonspa.com)

**Wildflower Aesthetic Co.**

895 Pembina Road  
P: 587-844-0682  
W: [wildfloweraesthetic.co](http://wildfloweraesthetic.co)

## FITNESS



**Ardrossan Rec Complex**

1 Avenue  
T: 780-400-2084  
W: [strathcona.ca/arc](http://strathcona.ca/arc)

**Chop Shop Physiques**

800 Broadmoor Boulevard  
T: 587-708-0160  
W: [chopshopphysiques.ca](http://chopshopphysiques.ca)

**Crossfit Sherwood Park**

250 Sioux Road  
T: 780-257-4827  
W: [crossfitsherwoodpark.com](http://crossfitsherwoodpark.com)

**Emerald Hills Leisure Centre**

3555 Emerald Drive  
T: 780-464-2112  
W: [strathcona.ca/ehlc](http://strathcona.ca/ehlc)

**EmpowerFIT**

176 Chippewas Road  
T: 780-417-5725  
W: [empowerfit.ca](http://empowerfit.ca)

**Fitness Evolution**

2257 Premier Way  
T: 780-919-7901  
W: [fitnessevolutionsshpark.com](http://fitnessevolutionsshpark.com)

**Glen Allan Recreation Complex**

199 Georgian Way  
T: 780-467-4404  
W: [strathcona.ca/garc](http://strathcona.ca/garc)

**House of Lagree**

663 Wye Road  
W: [houseoflagree.com](http://houseoflagree.com)

**InCentre Pilates**

120 Pembina Road  
T: 587-338-2368  
W: [incentrepilates.com](http://incentrepilates.com)

**Kinsmen Leisure Centre**

2001 Oak Street  
T: 780-464-2112  
W: [strathcona.ca/klc](http://strathcona.ca/klc)

**Little Sweatshop**

2301 Premier Way  
T: 780-906-1816  
W: [littlesweatshop.com](http://littlesweatshop.com)

**Millennium Place**

2000 Premier Way  
T: 780-416-3300  
W: [strathcona.ca/mp](http://strathcona.ca/mp)

**Pilates FX**

220 Lakeland Drive  
T: 780-222-2977  
W: [pilatesfx.ca](http://pilatesfx.ca)

**Raise the Bar (RTB)**

134 Pembina Road  
T: 780-918-6799  
W: [raisethebarspa.ca](http://raisethebarspa.ca)

**Sculpted Finery**

T: 780-690-9040  
W: [sculptedfinery.com](http://sculptedfinery.com)

**Werkhaus**

146 Provincial Avenue  
T: 780-907-3735  
W: [werkhaus.ca](http://werkhaus.ca)





# RECREATION & LEISURE

Take time to explore new hobbies and enjoy the simple pleasures of life. Hit the golf course for a relaxing day outdoors – perfect for unwinding and having fun. Whether it's hiking, bird watching, or playing sports, leisure activities are a great way to recharge. #GoStrathco

## GOLF

**Belvedere Golf and Country Club**

51418 Highway 21  
T: 780-467-2025  
W: [belvederegccc.com](http://belvederegccc.com)

**Country Side Golf Club**

51466 Range Road 232  
T: 780-467-4653  
W: [csgc.ca](http://csgc.ca)

**Evolution Golf**

6000 Buckingham Drive  
T: 587-456-8338  
W: [evolutiongolf.ca](http://evolutiongolf.ca)

**Fox Run Golf Course**

T: 780-998-4653  
W: [foxrungolfcourse.ca](http://foxrungolfcourse.ca)

**Golf Stadium**

100 Broadview Drive  
T: 780-570-4653  
W: [thegolfstadium.com](http://thegolfstadium.com)

**Longshotz Golf**

53139 Highway 21  
T: 780-449-4711  
W: [longshotz.ca](http://longshotz.ca)

**Legends Golf and Country Club**

53541 Range Road 232  
T: 780-449-4911  
W: [legendsgolf.ca](http://legendsgolf.ca)

**Northern Bear Golf Club**

51055 Range Road 222  
T: 780-922-2327  
W: [northernbeargolf.com](http://northernbeargolf.com)

**The Broadmoor**

2100 Oak Street  
T: 780-467-7373  
W: [thebroadmoor.ca](http://thebroadmoor.ca)

**The Golf Den Lounge and Eatery**

975 Ordze Road  
T: 780-570-5336  
W: [golfden.ca](http://golfden.ca)





# ACTIVE LIFESTYLES

Strathcona County is the spot if you are interested in something fun, adventurous and fast paced. Perfect your kickflips, gallop through fields, and set your sights on adventure! #GoStrathco

**Ardrossan Skate Park**  
45 Queen Street, Ardrossan  
T: 780-467-2211  
W: [strathcona.ca/skillsparks](http://strathcona.ca/skillsparks)

**Big Island Stables**  
52152 Range Road 224  
T: 780-887-9770  
W: [bigislandstables.ca](http://bigislandstables.ca)

**Trapline Adventures**  
T: 780--998-0074  
W: [traplineadventures.com](http://traplineadventures.com)

**Clover Leaf Stables**  
51328 Range Road 231  
T: 780-449-5570  
W: [cloverleafstables.ca](http://cloverleafstables.ca)

**Delta Force Paintball**  
23066 Township Road 540  
T: 1-800-568-8909  
W: [canadapaintballing.ca](http://canadapaintballing.ca)

**Equus Alive**  
54229 Range Road 210  
T: 780-499-9219  
W: [equusalive.com](http://equusalive.com)

**Heritage Hills Childrens' Pump Track**  
235 Heritage Drive  
T: 780-467-2211  
W: [strathcona.ca/skillsparks](http://strathcona.ca/skillsparks)

**Highland Park Equestrian**  
52568 Range Road 210  
T: 780-908-6431

**Keno Hills Stable**  
52165 Range Road 210  
T: 780-922-2941  
W: [kenohills.com](http://kenohills.com)

**Millennium Place Skatepark**  
T: 780-467-2211  
W: [strathcona.ca/skillsparks](http://strathcona.ca/skillsparks)

**Paints-Plus Equine Center**  
22441 Highway 14  
T: 780-237-7587  
W: [paints-plus.com](http://paints-plus.com)

**Ridge Wilderness Adventures**  
W: [ridgewilderness.com](http://ridgewilderness.com)

**Strathcona County Bike Skills Park**  
300 Broadview Road  
T: 780-467-2211  
W: [strathcona.ca/skillsparks](http://strathcona.ca/skillsparks)

**Sunridge Ski Area**  
10980 17 Street  
T: 780-449-6555  
W: [sunridgeskiarea.com](http://sunridgeskiarea.com)

**Sherwood Park Archery Club**  
22380 Township Road 520  
W: [sherwoodparkarchery.com](http://sherwoodparkarchery.com)

**Strathcona Wilderness Centre**  
52535 Range Road 212  
T: 780-922-3939  
W: [strathcona.ca/swc](http://strathcona.ca/swc)

**Still Meadows Ranch**  
51427 Range Road 210  
T: 780-922-5566  
W: [stillmeadowsranch.ca](http://stillmeadowsranch.ca)

**Talking Rock Tours**  
T: 780-298-7992  
W: [talkingrocktours.com](http://talkingrocktours.com)

**Trendsetting Stables**  
53440 Range Road 214  
T: 780-433-1464  
W: [trendsettingstables.com](http://trendsettingstables.com)



Photo: Travel Alberta







## TRAILS & NATURAL AREAS

Get back to nature on the many trails and natural areas found throughout Strathcona County. A mecca for birdwatchers and nature lovers alike, Breathe deep and walk on. #GoStrathco

### **Biodiversity Trail**

52521 Range Road 211  
W: [strathcona.ca/beaverhills](https://strathcona.ca/beaverhills)

### **Cooking Lake-Blackfoot Provincial Recreation Area**

Range Road 210,  
between Township Road 524 and 530  
T: 780-922-3293  
W: [albertaparks.ca](https://albertaparks.ca)

### **Elk Island National Park**

T: 1-877-737-3783 for reservations  
W: [pc.gc.ca](https://pc.gc.ca)

### **Golden Ranches**

Range Road 205 South of Wye Road  
or Range Road 210, North of Highway 14  
T: 780-483-7578  
W: [ealt.ca/golden-ranches](https://ealt.ca/golden-ranches)

### **Hicks**

West side of Range Road 204  
South of Highway 14  
T: 780-483-7578  
W: [ealt.ca/hicks](https://ealt.ca/hicks)

### **Ministik Lake Game Bird Sanctuary**

Township Road 510 between  
Range Road 205 and 212  
T: 780-464-7955  
W: [ealt.ca/ministik](https://ealt.ca/ministik)

### **North Cooking Lake Natural Area**

Wye Road South of Township 522  
T: 780-922-3293 or 780-672-7274  
W: [albertaparks.ca](https://albertaparks.ca)

### **Strathcona Wilderness Centre**

52535 Range Road 212  
T: 780-922-3939  
W: [strathcona.ca/swc](https://strathcona.ca/swc)

### **Parkway Trail System**

W: [strathcona.ca/trails](https://strathcona.ca/trails)  
Ukrainian Cultural Heritage Village  
T: 780-662-3640  
W: [ukrainianvillage.ca](https://ukrainianvillage.ca)

### **Sherwood Park Natural Area**

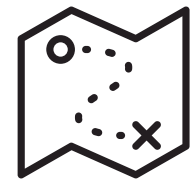
Located between Township Road 520  
and 522 on Range Road 231  
T: 780-461-2211  
W: [strathcona.ca/naturalarea](https://strathcona.ca/naturalarea)

### **Strathcona Science Provincial Park**

8650 17 Street  
T: 780-922-3293  
W: [albertaparks.ca](https://albertaparks.ca)

### **Strathcona County Regional Trail/ Riverside Nature Trail**

W: [strathcona.ca/regionaltrail](https://strathcona.ca/regionaltrail)  
and [rivervalley.ab.ca](https://rivervalley.ab.ca)



**CHECK OUT  
THE TRAIL MAP**

[strathcona.ca/trails](https://strathcona.ca/trails)

# FIND LOCAL SUPPORT LOCAL

This GoGuide is full of local intendant businesses, and you can find even more businesses at [strathcona.ca/businessdirectory](https://strathcona.ca/businessdirectory). You can find the best ways to support local at [strathcona.ca/supportlocal](https://strathcona.ca/supportlocal)





# CAMPING, LODGING & EVENT FACILITIES

Throughout the year, you are pretty much guaranteed to enjoy vast blue skies, nights full of stars or aurora borealis, roaring fires, delicious 'smores, and memories to last a lifetime. #GoStrathco



**Astotin Lake Campground**

54401 Range Road 203  
T: 780-992-2950 or 1-877-737-3783  
W: [pc.gc.ca](http://pc.gc.ca)

**Beaver Hills Retreat**

54234 Range Road 205  
T: 780-691-4407  
W: [beaverhillsretreat.ca](http://beaverhillsretreat.ca)

**Elk Island Retreat**

54371 Range Road 205 (office)  
T: 780-998-0708  
W: [elkislandretreat.com](http://elkislandretreat.com)

**Hastings Lake Gardens & Events**

51056 Range Road 204  
T: 780-662-2494  
W: [hastingslakegardens.com](http://hastingslakegardens.com)

**Half Moon Lake Resort**

21524 Township Road 520  
T: 780-922-3045  
W: [halfmoonlakeresort.com](http://halfmoonlakeresort.com)

**Kawtikh RV Retreat**

51380A Range Road 205  
T: 780-922-5168  
W: [kawtikh.com](http://kawtikh.com)

**Maggie's Hill Heritage Loghouse**

Find on Airbnb, Vrbo, Facebook

**Rising Moon Studio**

52219 Range Road 231  
W: [risingmoonstudio.ca](http://risingmoonstudio.ca)

**Silver Fox Inn and Gardens**

52328 Range Road 215  
T: 780-922-2370  
W: [silverfoxgardens.ca](http://silverfoxgardens.ca)

**Strathcona Wilderness Centre**

52535 Range Road 212  
T: 780-922-3939  
W: [strathcona.ca/swc](http://strathcona.ca/swc)

**Van-Es Camp and Conference Centre**

51244 Range Road 220  
T: 780-922-2457  
W: [vanes.ca](http://vanes.ca)



Download this guide to your phone.  
[strathcona.ca/goguide](http://strathcona.ca/goguide)

ON THE GO?

GO STRATHCO





## FARM EXPERIENCES

Connect with nature. Learn about food and agricultural experiences. You'll find several hands-on activities in and around Strathcona County that will fill your heart and make you smile. #GoStrathco

### **Bar OA Flower Farm**

54313 Range Road 213

T: 780-995-6398

W: [baroafarms.com](http://baroafarms.com)

### **Blooms On 7**

51553 Range Road 225A

T: 780-975-3932

W: [bloomson7.ca](http://bloomson7.ca)

### **Birch Bay Ranch**

51505 Range Road 215

T: 780-922-2883

W: [birchbayranch.com](http://birchbayranch.com)

### **Boreal Harvest Farm**

21033 TWP Road 534

W: [borealharvest.com](http://borealharvest.com)

### **Creekside Berry Farm**

53418 Range Road 231

T: 780-417-3128

W: [creeksideberryfarm.com](http://creeksideberryfarm.com)

### **Dreamcatcher Nature**

#### **Assisted Therapy**

53044 Range Road 213 Ardrossan

T: 780-809-1047

W: [dreamcatcherassociation.com](http://dreamcatcherassociation.com)

### **Experience Alberta**

W: [experiencealberta.ca](http://experiencealberta.ca)

### **Fairfolk Farm**

55079 Range Road 205

T: 867-678-5523

### **Lamberry Ranch**

51220 Range Road 213

T: 780-662-7669

### **Halfmoon Farm Tours**

52161 Range Road 220

T: 403-352-4216

### **Pierogerie**

21333 Highway 14

T: 780-430-0319

W: [pierogerie.ca](http://pierogerie.ca)





## FARMERS' MARKETS

### **ARAS Ardrossan Market**

60 First Avenue, Ardrossan  
Tuesdays, June-September  
T: 780-901-3388  
W: [ardrossanrecagsociety.ca](http://ardrossanrecagsociety.ca)

### **Salisbury Market**

52337 Range Road 232  
Thursdays, all year  
T: 780-904-7914  
W: [salisburyfarmersmarket.ca](http://salisburyfarmersmarket.ca)

### **Sherwood Park Market**

3000 Emerald Drive  
(Canadian Tire parking lot)  
Wednesdays, April-October  
401 Festival Lane  
Strathcona Community Centre  
Wednesdays, October-May  
T: 780-464-3354  
W: [sherwoodparkfarmersmarket.ca](http://sherwoodparkfarmersmarket.ca)

### **South Cooking Lake Market**

22106 South Cooking Lake Road  
Thursdays, June-September



## UNIQUE EXPERIENCES

Come with your family and try something out-of-the-ordinary in Strathcona County.  
#GoStrathco

### **A Charmed Affair**

153 Pembina Road  
T: 587-714-2204  
W: [acharmedaffair.ca](http://acharmedaffair.ca)

### **Arkadium**

130 Broadway Boulevard  
T: 780-400-1995  
W: [arkadiumretroarcade.com](http://arkadiumretroarcade.com)

### **Bird Dreams**

T: 403-358-9993  
**Picnics in the Forest**  
23341 Township Road 514  
T: 780-803-3557  
W: [picnicsintheforest.com](http://picnicsintheforest.com)

### **Keato Meadow Corn Maze**

Highway 15 and RR 205, Fort Saskatchewan  
Open in October – Facebook for details

### **Sherwood Bowl**

975 Fir Street  
T: 780-464-2100  
W: [sherwoodbowl.com](http://sherwoodbowl.com)

### **Spray decks and parks**

W: [strathcona.ca/spraydecks](http://strathcona.ca/spraydecks)

## SUBSCRIBE

Have tourism information and news sent directly to your email.

[strathcona.ca/edtnews](http://strathcona.ca/edtnews)

## GREENHOUSES

With the long summers and year-round blue skies, the Strathcona County area has several greenhouses to delight your senses. #GoStrathco

### **Aqualine**

23211 Township Road 514  
T: 780-467-3450  
W: [aqualinewaterfeatures.com](http://aqualinewaterfeatures.com)

### **Aspen Ridge Greenhouses**

52257 Range Road 231  
T: 780-464-5527  
W: [aspenridgegreenhouses.com](http://aspenridgegreenhouses.com)

### **Cornwall Cottage Gardens Greenhouses**

55332 Range Road 205  
T: 780-940-1935  
W: [cornwallcottagegardens.ca](http://cornwallcottagegardens.ca)

### **Estate Gardens Greenhouse**

1 Highroad Estates  
52333 Range Road 224  
T: 780-922-6329  
W: [estategardens.ca](http://estategardens.ca)

### **Greenland Garden Centre**

23108 - Highway 16  
T: 780-467-7557  
W: [greenlandgarden.com](http://greenlandgarden.com)

### **Farmstand on Wye / Green Thumb Kids Gardens**

26-22350 Wye Road  
W: [GTKflorals.ca](http://GTKflorals.ca)

### **Salisbury Greenhouse**

52337 Range Road 232  
T: 780-467-5743  
W: [salisburygreenhouse.com](http://salisburygreenhouse.com)

### **Sherwood Nurseries**

22040 Township Road 522  
T: 587-409-4442  
W: [sherwoodnurseries.ca](http://sherwoodnurseries.ca)



### **Wallish Greenhouses**

53218 Range Road 231  
T: 780-467-3091  
W: [wallishgreenhouses.ca](http://wallishgreenhouses.ca)

### **South Cooking Lake Greenhouses**

22324 Highway 14  
T: 780-922-6765  
W: [southcookinglakegreenhouses.ca](http://southcookinglakegreenhouses.ca)

### **Hastings Lake Gardens**

51056 Range Road 204  
T: 780-662-2494  
W: [hastingslakegardens.com](http://hastingslakegardens.com)



Photo: Dylan Reade, Ukrainian Cultural Heritage Village

## A remarkable place.

Experience the biosphere in your backyard.

Distinctive geography, exceptional biodiversity and a storied history make the Beaver Hills Biosphere a go-to destination for year-round outdoor recreation and tourism activities and nature-based experiences.



[beaverhills.ca](http://beaverhills.ca)

Photo: Dylan Reade, Ukrainian Cultural Heritage Village

**A remarkable place.**  
Experience the biosphere in your backyard.

Distinctive geography, exceptional biodiversity and a storied history make the Beaver Hills Biosphere a go-to destination for year-round outdoor recreation and tourism activities and nature-based experiences.





# BIKE WALK SHOOT

Strathcona County has hundreds of kilometers of trails to help you explore this wonderful community. Visit [strathcona.ca/trails](https://strathcona.ca/trails) to go!

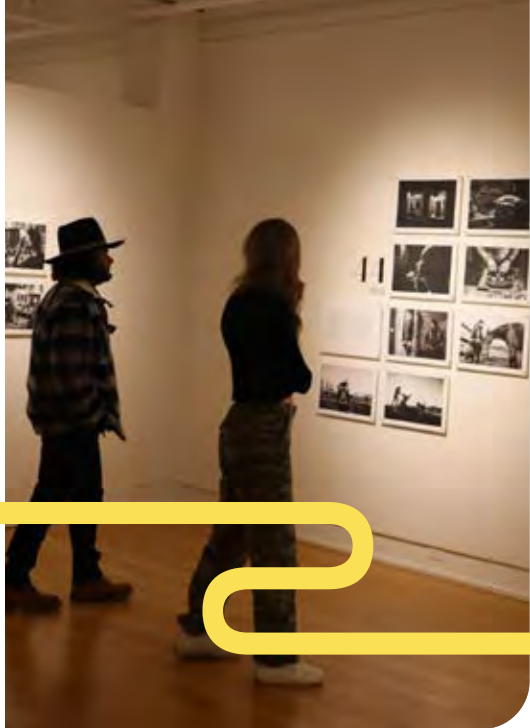


Photo: Travel Alberta



Photo: Mike Scott

# ARTS & CULTURE

From fine art galleries, breath-taking public sculptures and murals, festivals, live music, plays and immersive museum, you'll be impressed with the vibrant scene to be found in Strathcona County. With every step you take, the local art and culture await your discovery. #GoStrathco

## ART GALLERIES

- Gallery@501**  
 501 Festival Avenue  
 T: 780-410-8585  
 W: [strathcona.ca/gallery501](https://strathcona.ca/gallery501)
- Loft Gallery**  
 590 Broadmoor Boulevard  
 T: 780-449-4443  
 W: [artstrathcona.com](https://artstrathcona.com)
- Picture This! Framing and Gallery**  
 959 Ordze Road  
 T: 780-467-3038 or 1-800-528-4278  
 W: [picturethisgallery.com](https://picturethisgallery.com)
- Smeltzer House Visual Arts Centre**  
 1 Broadmoor Boulevard  
 T: 780-464-2023  
 W: [strathcona.ca/smeltzerart](https://strathcona.ca/smeltzerart)
- Spark Centre**  
 2257 Premier Way  
 T: 780-488-9559  
 W: [spark.ca](https://spark.ca)

## MUSEUMS

- Digital History of Strathcona County**  
 W: [strathcona.ca/history](https://strathcona.ca/history)
- Strathcona County Museum and Archives**  
 913 Ash Street  
 T: 780-467-8189  
 W: [strathma.ca](https://strathma.ca)
- Ukrainian Cultural Heritage Village**  
 East of Sherwood Park on Highway 16  
 T: 780-662-3640  
 W: [ukrainianvillage.ca](https://ukrainianvillage.ca)

## CONCERTS & THEATERS

- Festival Place**  
 100 Festival Way  
 T: 780-464-2852  
 W: [festivalplace.ca](https://festivalplace.ca)
- Josephburg Presents**  
 54569 Range Road 215  
 T: 780-998-2740  
 W: [josephburg-ag.ca/josephburg-presents](https://josephburg-ag.ca/josephburg-presents)

## LIBRARY

- Strathcona County Library**  
 401 Festival Lane  
 T: 780-410-8600  
 W: [sclibrary.ca](https://sclibrary.ca)

## LANDMARKS

- Heritage Mile**  
 W: [edmontonmapsheritage.ca](https://edmontonmapsheritage.ca)
- Public Art Collection**  
 W: [strathcona.ca/publicart](https://strathcona.ca/publicart)

# CANADIAN BIRKIE

# Gliding into the Future.

SUMMER EDITION

WINTER EDITION

**Biking LIKE A VIKING**  
JULY 13, 2025

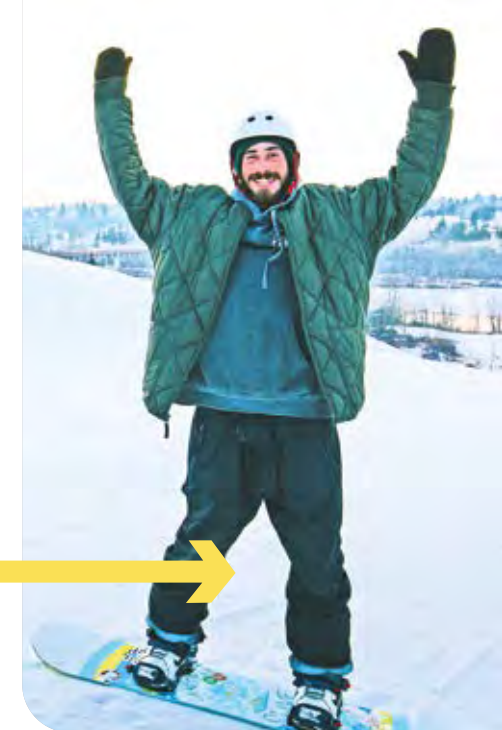
**CANADIAN BIRKIE BIKEN BENDER**  
SEPT 15, 2025

**40TH ANNIVERSARY CANADIAN birkie Ski Festival.**  
FEB 6-8, 2026

#CdnBirkie #XCSki #Bikenbender #BikingLikeAViking #GlidingintotheFuture

Learn more at [CanadianBirkie.com](https://CanadianBirkie.com)





## FALL ITINERARY

### DAY 1

For the weekend, stay at [Astotin Lake Campground](#) which offers many non-serviced campsites, several walk-in tent sites, and five oTENTiks.

[Cooking Lake-Blackfoot Provincial Recreation](#) has active wildlife management programs and have created a wide range of habitats that support numerous wildlife species. As a result, there are excellent wildlife viewing opportunities within the area's trail systems. There is almost 85 kilometers of hiking trails originating from four staging areas.

For dinner, visit [Phat Boy Cheesesteaks](#), a culinary gem that redefines the art of the perfect cheesesteak. They promise great food and care that will keep you coming back.

### DAY 2

[Keato Meadow Corn Maze](#) has a twelve acre corn maze, bouncy house, games, and snacks, Keato is the center of family time and having fun!

As the leaves begin to fall and temperatures drop, consider it a perfect time to visit [Cafe Haven](#) for a warm beverage, and a homemade sandwich and dessert. Go ahead and get cozy.

In September, be sure to catch [Savour Strathcona County!](#) This family event is full of live music, local art and delicious food from local independent restaurants.

### DAY 3

[Statement Junkie Yarn Co.](#) is a yarn shop in Sherwood Park and they carry a variety of yarns, notions, and books from around the world. They have a passion for the fibre arts, community, creativity, and being a space that supports your crafting journey.

Not only does [Confetti Sweets](#) have delicious cookies and treats, they also have [Confetti Collective](#). It's full of locally made gift ideas for those you love, or just treat yourself – you deserve it!

It's time enjoy the taste of Italy in the local neighborhood. [Cafe Celeste](#) is an OpenTable Diners' Choice winner. They feature weekly specials, happy hours, brunch and kids under 5 eat free!

## WINTER ITINERARY

### DAY 1

Is your wardrobe ready for winter? [Wander in the Park](#) is open in Broadmoor Plaza, and they're ready to help fill your clothing needs. From party dresses to stylish jewelry, they have everything you need to make a statement this winter. Stop by and support a local business this weekend!

[New Asian Village](#) has been a Sherwood Park staple for years, and chances are that you haven't yet tried everything on their menu. Stop by and try out their buffet for new flavours and recipes – you might just find your new favourite food!

[Arkadium](#) is locally owned arcade that was started to recreate arcades of the past. A small entry fee means that you don't have to carry around spare change to play all the games! Choose from a selection of over 80 pinball and arcade games.

### DAY 2

With winter here, [Sunridge Ski Area](#) is open for you to show off your ski or snowboarding skills. If you prefer, they also have a snowtubing hill to try out.

Get out of the snow and head over to [Greenland Garden Centre](#) to get everything you need to get in the holiday spirit. This family-owned greenhouse is an excellent option for everything you need, from decorations to gift options.

It may be cold outside, but go up the street to visit the Mediterranean – [Gregg Mediterranean](#) that is! They've been part of this community for years, and their Mediterranean cuisine has long been a cherished destination for locals in the know.

### DAY 3

The [Strathcona County Wilderness Centre](#) is open for you to enjoy a cross-county ski or snowshoe through the wilderness on perfectly groomed trails. Rentals are also available should you need to so.

Take your beloved furred one out to a popular destination among local four-legged friends – [Deermound Off-leash Park](#). Your pup will thank you!

When their local food truck, [Casa-12Doce](#), became a booming success, they responded to their customers and opened [La Patrona](#) restaurant, and [The Other Place](#). They have provided these delectable places to enjoy delicious, authentic Mexican cuisine in Sherwood Park. Stop by and make yourself at home.





# CHOOSE THE PATH LESS TRAVELLED

In Sherwood Park and Strathcona County, every weekend is your chance to GO! Check out the weekly travel itinerary blog, book a hotel and enjoy everything there is here.

[strathcona.ca/weekends](https://strathcona.ca/weekends)



For additional community event listings, please visit [strathcona.ca/events](https://strathcona.ca/events)  
Dates subject to change. Search online for the latest information.

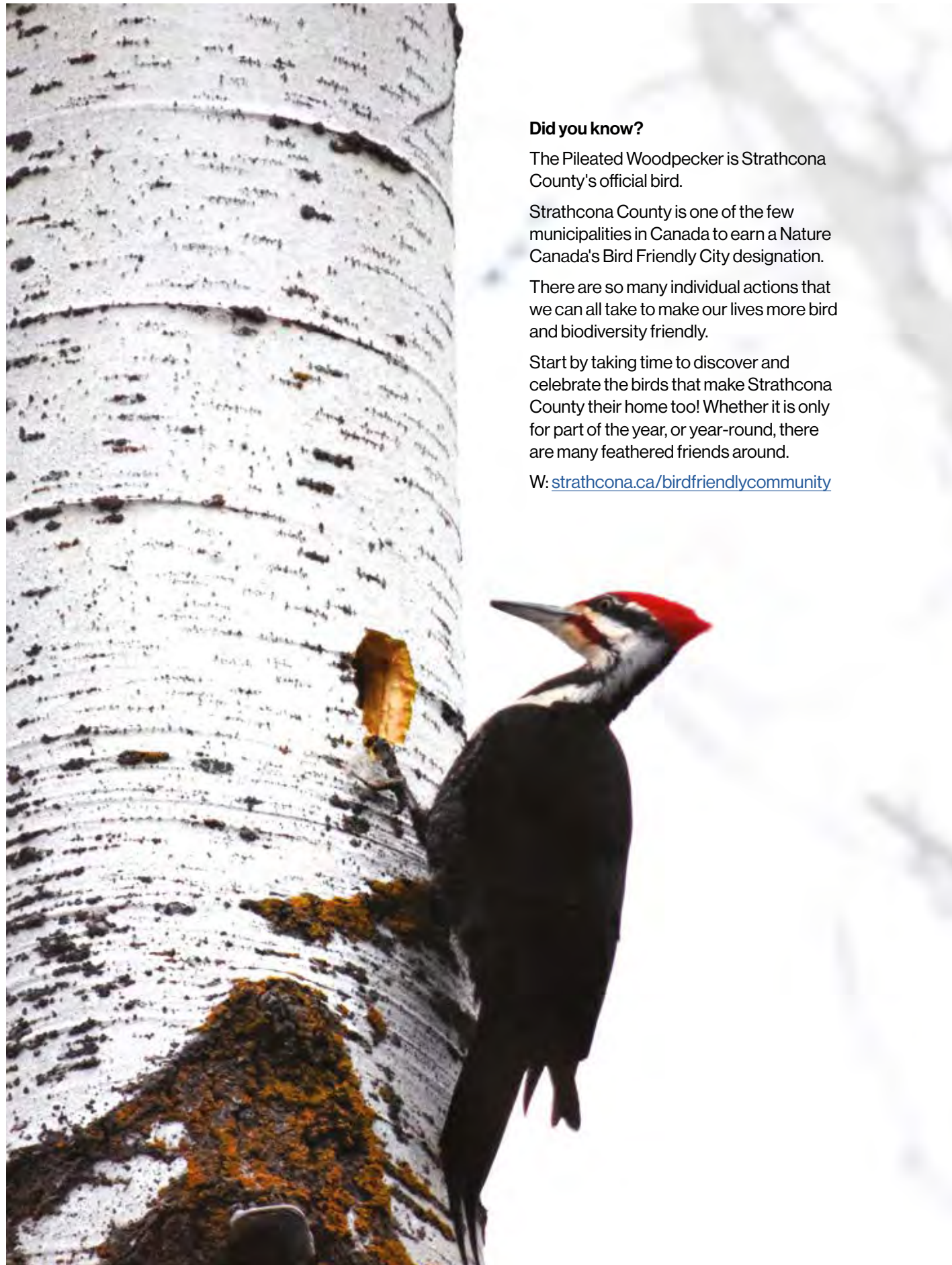
## EVENT CALENDAR

MAY		JUN		JUL	
Weds	Sherwood Park Farmers' Market	Tues	Ardrossan Farmers' Market	Tues	Ardrossan Farmers' Market
Thurs	Salisbury Farmers' Market	Weds	Sherwood Park Farmers' Market	Weds	Sherwood Park Farmers' Market
5	Festival Place – Classic Albums Live	Thurs	Salisbury Farmers' Market South Cooking Lake Market	Thurs	Salisbury Farmers' Market Festival Place – Qualico Patio Series
6	Festival Place - Lisa Loeb	11-12	Festival Place – Chilliwack	1	Canada Day
15-18	YEGPin Pinball & Arcade Expo	14	Survivorfest	11-12	Ravenwood Music Festival
22-24	Great Canadian Scrapbook Festival	14	Run for H2O	13	Biking Like a Viking
		14	Ardrossan Parade (ARAS)	18-20	Great Outdoors Comedy Festival
				19-20	Highland Gathering
				19-28	KDays
AUG		SEPT		OCT	
Tues	Ardrossan Farmers' Market	Tues	Ardrossan Farmers' Market	Weds	Sherwood Park Farmers' Market
Weds	Sherwood Park Farmers' Market	Weds	Sherwood Park Farmers' Market	Thurs	Salisbury Farmers' Market South Cooking Lake Market
Thurs	Salisbury Farmers' Market Festival Place – Qualico Patio Series South Cooking Lake Market	Thurs	Salisbury Farmers' Market South Cooking Lake Market	1-4	Canadian Finals Rodeo
2-4	Edmonton Heritage Festival	7	Savour Strathcona County	5-8	Farmfair International
7-10	Edmonton Folk Music Festival	8-14	PGA Tour Americas ATB Classic		
8-10	Cariwest Caribbean Arts Festival				
14-24	Edmonton Fringe Festival				
16-17	Alberta Open Farm Days				
23-24	Strathcona Vintage Tractor Association Pull and Show				
NOV		DEC		JAN 2026	
Weds	Sherwood Park Farmers' Market	Weds	Sherwood Park Farmers' Market	Weds	Sherwood Park Farmers' Market
Thurs	Salisbury Farmers' Market	Thurs	Salisbury Farmers' Market	Thurs	Salisbury Farmers' Market
FEB 2026		MAR 2026		APR 2026	
Weds	Sherwood Park Farmers' Market	Weds	Sherwood Park Farmers' Market	Weds	Sherwood Park Farmers' Market
Thurs	Salisbury Farmers' Market	Thurs	Salisbury Farmers' Market	Thurs	Salisbury Farmers' Market



Find the latest events and activities at [strathcona.ca/events](https://strathcona.ca/events)





#### Did you know?

The Pileated Woodpecker is Strathcona County's official bird.

Strathcona County is one of the few municipalities in Canada to earn a Nature Canada's Bird Friendly City designation.

There are so many individual actions that we can all take to make our lives more bird and biodiversity friendly.

Start by taking time to discover and celebrate the birds that make Strathcona County their home too! Whether it is only for part of the year, or year-round, there are many feathered friends around.

W: [strathcona.ca/birdfriendlycommunity](https://strathcona.ca/birdfriendlycommunity)



**SUPPORT YOUR LOCAL BUSINESS** - your resource for sourcing companies, products, services and expertise located in Sherwood Park and the rural areas of Strathcona County.

[strathcona.ca/businessdirectory](https://strathcona.ca/businessdirectory)







*Where cultural visions  
and energies come alive*



- *Hundreds of music, dance and theatre presentations*
- *performing arts programs* • *facility rentals*